



DOGSTYLER®



# CONTENT

Dogstyler

Page 3

Dogstyler Car

- Our series
- Trunk beds
- Car seats
- Car pads

Page 5 - 7  
Page 8 - 10  
Page 11 - 13  
Page 14 - 16

Dogstyler Home

- Dog beds & cushions
- Dog blankets
- Dog plaids

Page 17 - 24  
Page 25 - 27  
Page 28 - 30

Dogstyler Outdoor

- Collars & Leashes
- Harnesses & Leashes

Page 31 - 38  
Page 39 - 42

Contact

Page 44

# DOGSTYLER®

DOGSTYLER is a German manufacturer of highest-quality dog accessories. The well-being and safety of dogs is our top priority. For more than 10 years, we have been absolute experts in safe, comfortable and joint-friendly dog transport as well as in functional and stylish dog beds.

Our vision is to offer our customers a constantly evolving product segment, because we are convinced that dogs deserve the best in every aspect of daily life. This includes clothing, harnesses, leashes and collars, food bowls and much more.

We always strive for the best features in our products, so you can be sure that where it says DOGSTYLER on the outside, there is DOGSTYLER on the inside.





CAR

Serie Excellent Grün

DOGSTYLER®



# OUR SERIES

## Comfort



CLASSIC  
BLACK

- Faux leather inside not quilted
- Hygienic, antibacterial and odourless
- UV-resistant
- Easy to clean
- Scratch resistant



## Premium



CLASSIC  
QUILTED  
BLACK



CLASSIC  
QUILTED  
GREIGE

- Faux leather quilted inside
- Hygienic, antibacterial and odourless
- UV-resistant
- Easy to clean
- Scratch resistant





# OUR SERIES

Excellent



ITALIAN  
QUILTED  
BROWN



ITALIAN  
QUILTED  
GREY



ITALIAN  
QUILTED  
BORDEAUX



ITALIAN  
QUILTED  
GREEN



ITALIAN  
QUILTED  
BLACK

- Italian faux leather
- 3D quilting inside
- Hygienic, antibacterial and odourless
- UV-resistant
- Easy to clean
- Scratch resistant
- Moisture resistant



Serie Excellent Bordeaux



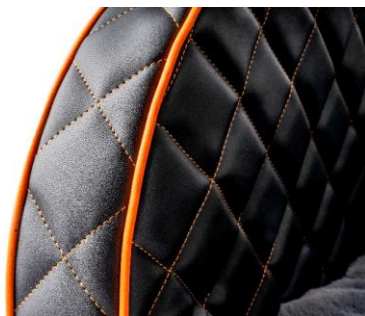
# OUR SERIES

## Sportline Edition NEW

- Italian faux leather
- 3D quilting inside
- Hygienic, antibacterial and odourless
- UV-resistant
- Easy to clean
- Scratch resistant
- Moisture resistant
- Contrasting piping seams



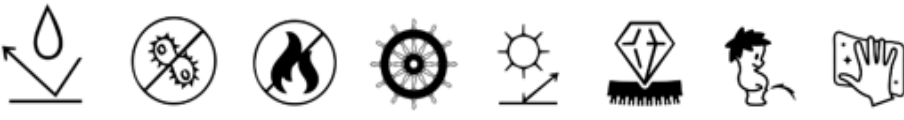
Black with blue stitching



Black with orange stitching



Black with red stitching





# TRUNK BED

## OUR NEW STANDARD

With the same quality and care as with our custom-made products, we ensure maximum safety and comfort during the journey in three optimally coordinated sizes. Therefore, extra-thick cold foam walls and an orthopaedic visco floor are part of our standard range. No matter which series you choose, Comfort, Premium or Excellent, your dog will always enjoy a fully protected bedding. Everything is developed in high-quality design, and you can be sure that you have chosen only the best for your dog.

## FEATURES

- Orthopaedic & shock-absorbing lying surface
- Soft and dimensionally stable side walls (thanks to extra thick & durable cold foam)
- First-class synthetic leather
- Hygienic, antibacterial and odourless
- Removable inner cushion
- Dimensionally stable and patented entry
- Interior protection for your vehicle
- Water-repellent inner cover

## MATERIAL

- Cover: Non-porous synthetic leather
- Side walls: Dimensionally stable cold foam
- Lying surface: Orthopaedic visco floor & cold foam



Serie Premium Grey



# TRUNK BED

## SIZE CHART

	Größe S	Größe M	Größe L
BREITE (1)	80 cm	90 cm	100 cm
TIEFE (2)	65 cm	80 cm	90 cm
HÖHE (3)	40 cm	40 cm	40 cm
BREITE INNEN (4)	68 cm	78 cm	88 cm
TIEFE INNE (5)	59 cm	74 cm	84 cm

Für S & M



Jack Russel Terrier, Mops, Kleinpudel und Hunderassen ähnlicher Größen

Für M & L



Australian Shepherd, Border Collie und Hunderassen ähnlicher Größen

Für L

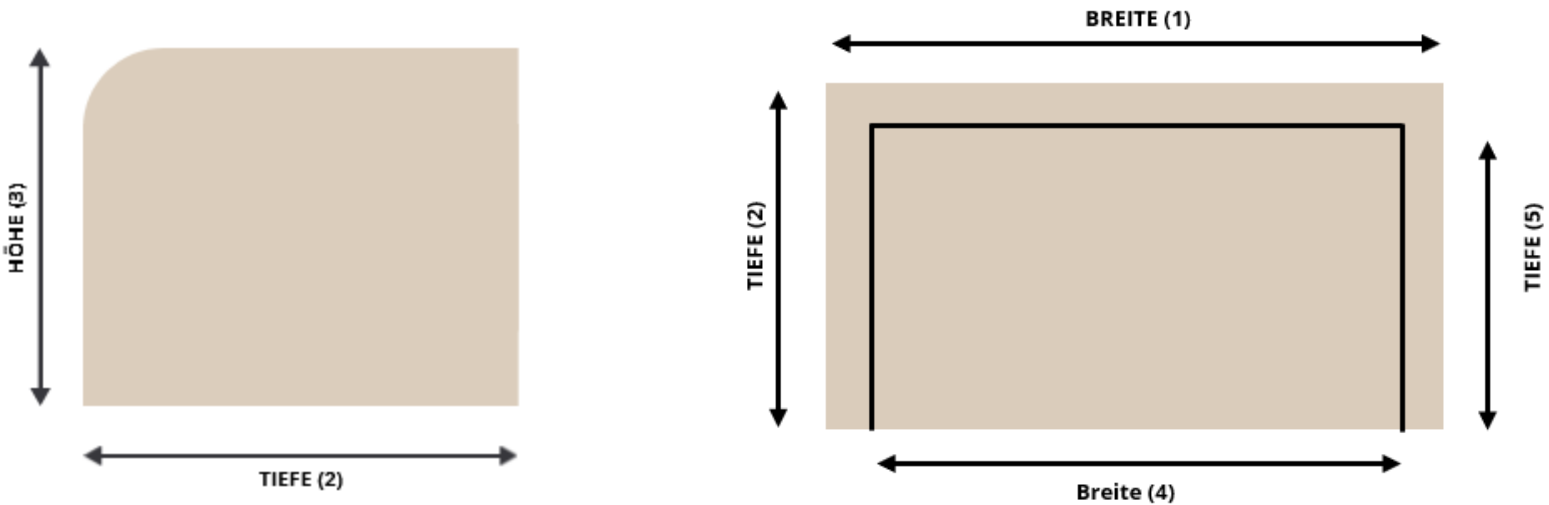


Labrador, Golden Retriever, Boxer, Schäferhund und Hunderassen ähnlicher Größen

Für L



Berner Sennenhund, Ridgeback, Dobermann und Hunderassen ähnlicher Größen



Series

Comfort



CLASSIC  
BLACK

Premium



CLASSIC  
QUILTED  
BLACK



CLASSIC  
GESTEPPT  
GREIGE

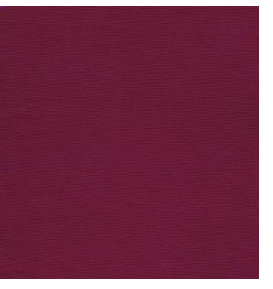
Excellent



ITALIAN  
QUILTED  
BROWN



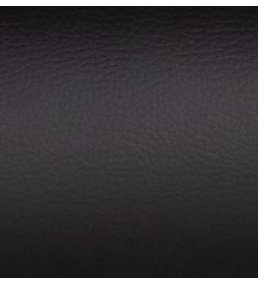
ITALIAN  
QUILTED  
GREY



ITALIAN  
QUILTED  
BORDEAUX



ITALIAN  
QUILTED  
GREEN



ITALIAN  
QUILTED  
BLACK



# TRUNK BED

## ACCESSORIES



## BELT SYSTEM

Belt system that connects the bed to the trunk and additionally buckles up your dog





# CAR SEAT

Open the door, put the dog in, buckle up – done!

The DOGSTYLER dog car seats for the rear seat and the front passenger seat are available with an **integrated Isofix system** - simply click the dog seat with Isofix into the holder, buckle up the dog and drive off. Thanks to the **adjustable angle**, the dog seat can be positioned optimally horizontal, and the **integrated seat belt** ensures that your dog stays securely in the seat while driving. Our softly padded and dimensionally stable side walls with extra thick cold foam protect your dog from a hard impact and in addition to safety, also serve as interior protection for your vehicle. The orthopaedic joint-friendly floor ensures optimum comfort and relaxed car journeys.

## FEATURES

- Integrated Isofix system with adjustable angle
- For rear bench and passenger seat
- Integrated and adjustable seat belt
- Orthopaedic & shock-absorbing lying surface
- Soft and dimensionally stable drop walls (due to extra thick cold foam)
- Pore-tight, high-quality synthetic leather
- Hygienic, antibacterial and odourless
- Removable inner cushion
- Dimensionally stable and patented entry
- Interior protection for your vehicle
- Water-repellent inner cover

## MATERIAL

- Cover: Non-porous synthetic leather
- Side walls: Dimensionally stable cold foam
- Lying surface: Orthopaedic visco floor



Serie Excellent



Serie Comfort



# CAR SEAT REAR BENCH

## SIZE CHART

	Größe S	Größe S+	Größe M	Größe L
BREITE AUßEN (1)	55 cm	58 cm	58 cm	58 cm
TIEFE AUßEN (2)	60 cm	64 cm	78 cm	105 cm
HÖHE AUßEN (3)	35 cm	49 cm	49 cm	49 cm
BREITE INNEN (4)	43 cm	46 cm	46 cm	46 cm
TIEFE INNEN (5)	54 cm	58 cm	72 cm	99 cm
HÖHE INNEN (6)	30 cm	44 cm	44 cm	44 cm



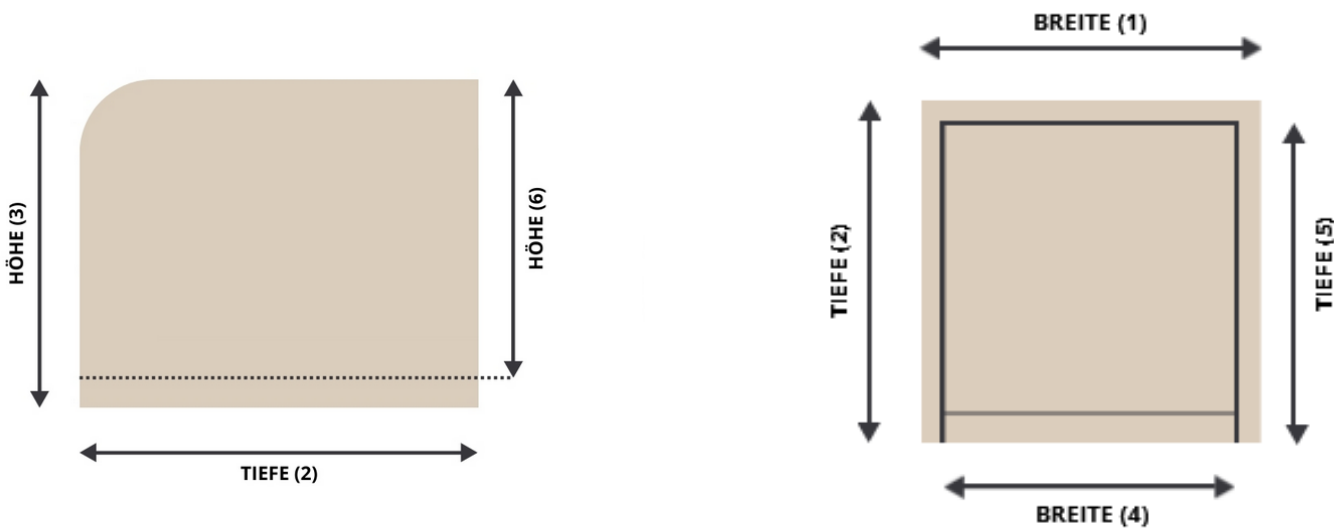
Jack Russel Terrier,  
Mops, Kleinpudel  
und Hunderassen  
ähnlicher Größen



Australian  
Shepherd, Border  
Collie und  
Hunderassen  
ähnlicher Größen



Labrador, Golden  
Retriever, Boxer,  
Schäferhund und  
Hunderassen  
ähnlicher Größen



### Series

#### Comfort



CLASSIC  
BLACK

#### Premium

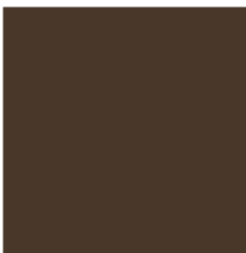


CLASSIC  
QUILTED  
BLACK



CLASSIC  
GESTEPPT  
GREIGE

#### Excellent



ITALIAN  
QUILTED  
BROWN



ITALIAN  
QUILTED  
GREY



ITALIAN  
QUILTED  
BORDEAUX



ITALIAN  
QUILTED  
GREEN



ITALIAN  
QUILTED  
BLACK



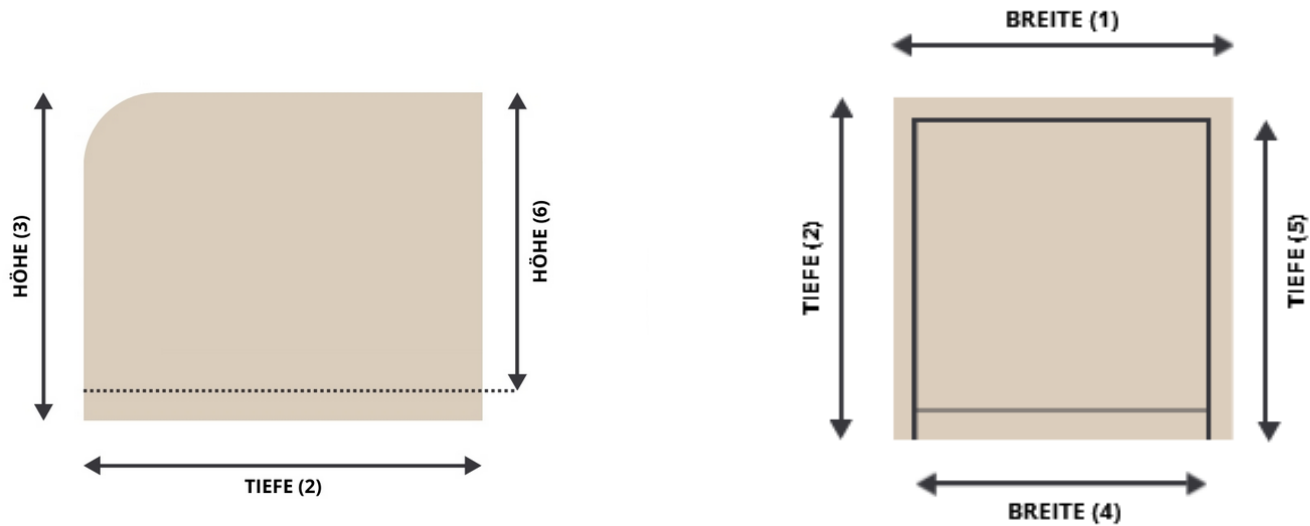
# PASSENGER CAR SEAT

## SIZE CHART

	Größe XS
BREITE AUßEN (1)	45 cm
TIEFE AUßEN (2)	45 cm
HÖHE AUßEN (3)	30 cm
BREITE INNEN (4)	33 cm
TIEFE INNEN (5)	39 cm
HÖHE INNEN (6)	25 cm



Zwergdackel,  
Chihuahua, Shi Tzu,  
Yorkshire Terrier und  
Hunderassen ähnlicher  
Größe



### Series

#### Comfort



CLASSIC  
BLACK

#### Premium

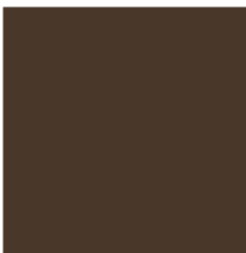


CLASSIC  
QUILTED  
BLACK



CLASSIC  
GESTEPPT  
GREIGE

#### Excellent



ITALIAN  
QUILTED  
BROWN



ITALIAN  
QUILTED  
GREY



ITALIAN  
QUILTED  
BORDEAUX



ITALIAN  
QUILTED  
GREEN



ITALIAN  
QUILTED  
BLACK



# CAR PAD

Extra comfort for every car journey NEW

With the Dogstyler Car Pad, every car ride will be even more pleasant for your dog. The pad has been specially developed as an addition to our car transport solutions and can be placed precisely on the respective inner cushion.

The 2 cm thick cold foam core provides additional pressure relief and increases lying comfort - ideal for longer journeys or sensitive dogs. The cuddly faux fur top creates a warm, secure lying feeling, while the velour-like underside reduces slipping. Thanks to the zipper, the cover is easily removable and washable, which makes the Car Pad particularly easy to clean. Available in coordinated sizes for the front passenger seat, rear bench and trunk, the pad fits seamlessly into all Dogstyler car systems and is the perfect upgrade for even more comfort on the road.

More convenience. More protection. More relaxation – on every journey.

## CHARACTERISTICS

- Perfect upgrade for all Dogstyler car transport solutions
- Cozy faux fur top for well-being on the go
- Custom-fit sizes for passenger, rear seat & trunk
- With zipper – cover easily removable
- Washable & hygienic
- Additional pressure-relieving & joint-friendly
- Ideal for long car journeys
- High-quality workmanship & durable

## MATERIAL

- Cover: Velour underside / Faux fur top
- Filling: cold foam 2 cm





# CAR PAD

## ACCESSORIES FOR CAR SEATS

Extra comfort for every car journey NEW

With the Dogstyler Car Pad, every car ride will be even more pleasant for your dog. The pad has been specially developed as an addition to our car transport solutions and can be placed precisely on the respective inner cushion.

## COLOR VARIANTS



BLACK

## SIZES

Sizes are suitable for the respective car seats and trunk beds





# CAR PAD

## ACCESSORIES FOR TRUNK BEDS

Extra comfort for every car journey NEW

With the Dogstyler Car Pad, every car ride will be even more pleasant for your dog. The pad has been specially developed as an addition to our car transport solutions and can be placed precisely on the respective inner cushion.

### COLOR VARIANTS



BLACK

### SIZES

Sizes are suitable for the respective car seats and trunk beds





# DOG BEDS & CUSHIONS





# DOG BED BRUNO

## PRODUCT

With sewn-in chambers and orthopaedic laying surface, the bed offers the highest level of comfort and optimal rest. The 100% viscoelastic foam flakes adapt to the shape of the dog's body, while the sewn-in chambers prevent the filling from slipping. Also suitable for large dogs up to 70 kg.

## FEATURES

- Orthopedic Floor
- Sewn-in chambers for optimal pressure equalization
- Reversible cushion with cuddly & leather side
- Also suitable for large and heavy dogs
- With practical carrying handle
- Removable cover for easy cleaning

## MATERIAL

Filling: 100% viscoflakes

Cover: Faux leather (classic/soft) & faux fur



Classic Greige



# DOG BED BRUNO

## SIZE CHART

SIZE	WIDTH	DEPTH	HEIGHT
S	80 cm	60 cm	20 cm
M	100 cm	70 cm	20 cm
L	115 cm	80 cm	20 cm
XL	130 cm	105 cm	20 cm

## SERIES



SOFT



CLASSIC



SOFT QUILTED



CLASSIC QUILTED





# DOG BED BRUNO

## COLOR VARIANTS



SOFT GREEN



SOFT ROST



SOFT LIGHT  
BEIGE



SOFT GREY



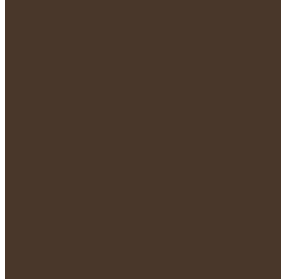
CLASSIC BLACK



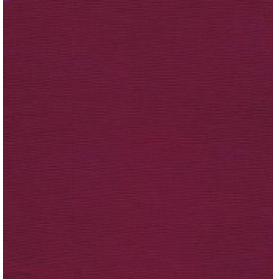
CLASSIC GREIGE



CLASSIC BEIGE



EXCELLENT  
ITALIAN  
BROWN



EXCELLENT  
ITALIAN  
BORDEAUX



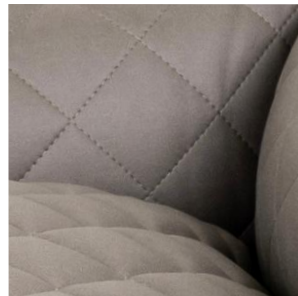
SOFT QUILTED GREEN



SOFT QUILTED  
RUST



SOFT QUILTED  
LIGHT BEIGE



SOFT QUILTED  
GREY



CLASSIC QUILTED  
BLACK



CLASSIC QUILTED  
GREIGE



CLASSIC QUILTED  
BEIGE



# DOG CUSHION KIRA

## PRODUCT

Our Kira orthopaedic dog cushion is more than just a cushion. Thanks to the mixture of visco and cold foam flakes in the sewn-in chambers, lying down here is particularly easy on the joints. The inner cushion allows a natural pit in which dogs feel particularly comfortable. Also suitable for large dogs up to 80 kg.

## FEATURES

- Orthopedic Reclining Pillow
- Sewn-in chambers for optimal pressure equalization
- High-quality viscoflakes are gentle on the joints
- Removable cover for easy cleaning
- Also suitable for large and heavy dogs

## MATERIAL

Filling: 50 % visco foam / 50 % cold foam



Curly Greige



# DOG CUSHION KIRA

## SIZE CHART

SIZE	WIDTH	DEPTH	HEIGHT
S	80 cm	60 cm	20 cm
M	100 cm	80 cm	20 cm
L	120 cm	100 cm	20 cm

## SERIES / COLORS



CURLY  
CREME-BEIGE



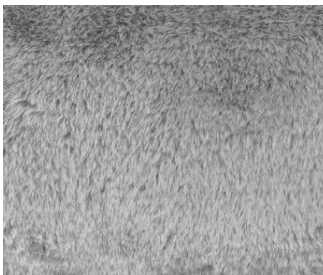
CURLY  
GREIGE



CURLY  
BROWN



CUDDLE BEIGE



CUDDLE GREY



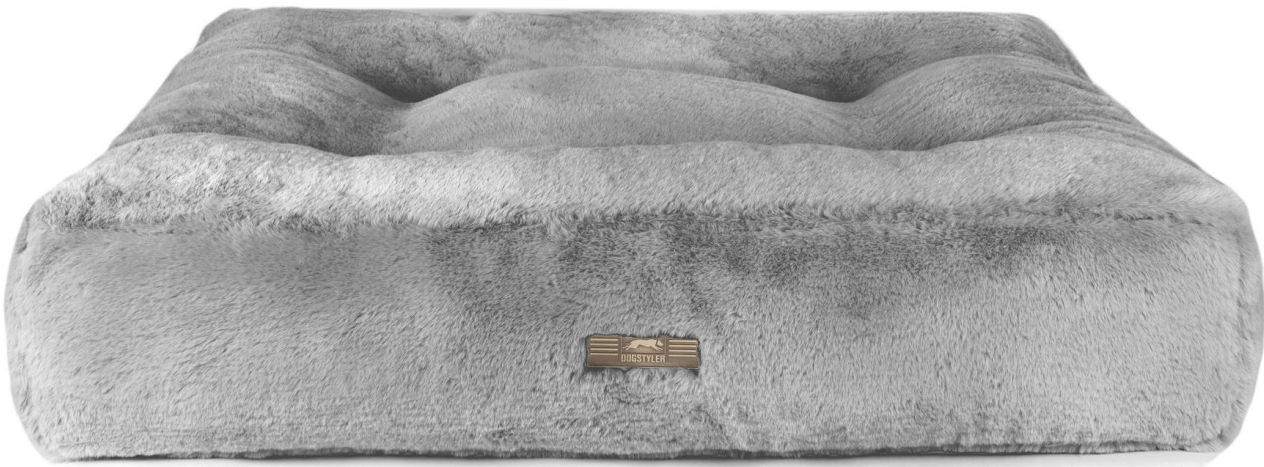
DONNA GREIGE



DONNA BLACK



CURLY Brown



CUDDLE Grey



DONNA Greige



# DOG CUSHION KURT

## PRODUCT

Simply turn over, twice as comfortable: Our Kurt dog cushion combines comfort with coziness. With scratch-resistant faux leather and modern or cozy fabric, Kurt offers a unique lying experience. The filling made of 100% visco flakes adapts perfectly to the shape of your dog's body and guarantees an orthopaedic lying feeling. The sewn-in chambers ensure dimensional stability.

## FEATURES

- Orthopedic Reclining Pillow
- Sewn-in chambers for optimal pressure equalization
- Practical carrying handle
- All-round stitched zipper for easy cleaning

## MATERIAL

Filling: 100% viscose flakes

Cover: Cozy faux fur or patterned design



Classic Light Grey



# DOG CUSHION KURT

## SIZE CHART

SIZE	WIDTH	DEPTH
M	90 cm	70 cm
L	120 cm	100 cm
XL	135 cm	115 cm

## SERIES / COLOURS



DUO  
CREME-ORANGE



DUO  
CREMGE-BEIGE



CLASSIC  
LIGHT GREY





# DOG BLANKETS





# DOG BLANKET DONNA

## PRODUCT

Our dog blanket Donna is the perfect cuddly companion for your dog. Whether as a mobile resting place for visits to friends or as an add-on in the beloved dog bed. It is made of a double-stitched, high-quality faux fur, which makes it particularly robust and fluffy and is therefore significantly thicker than conventional blankets. The line quilting makes our blanket look even more noble and makes your dog's bed a real eye-catcher.

## FEATURES

- Aesthetic line quilting
- Double-stitched fabric (top and bottom)
- Mobile resting place
- Size M to XXL for the whole family

## MATERIAL

Top and bottom: Fluffy faux fur with line quilting



Crème / Beige

DOGSTYLER®

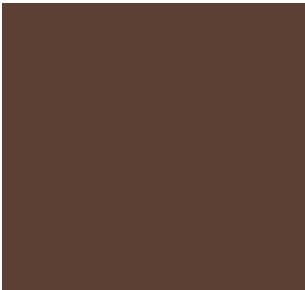


# DOG BLANKET DONNA

## SIZE CHART

SIZE	WIDTH	LENGTH
M	60 cm	80 cm
L	80 cm	100 cm
XL	90 cm	120 cm
XXL	140 cm	200 cm

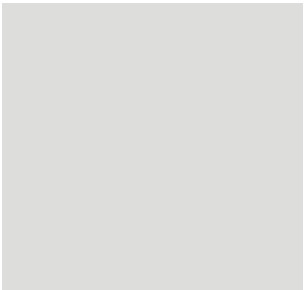
## COLORS



BROWN



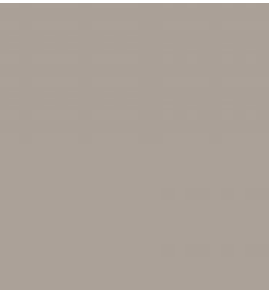
CREME / BEIGE



GREY



BLACK



GREIGE





# DOG PLAID

Dogstyler Plaid – comfort, that feels everywhere like home NEW

Whether on the sofa, in the dog's bed or directly on the floor - the Dogstyler Plaid offers your dog a cozy favorite place everywhere. The cuddly, deep-pile top invites your dog to relax, while the soft padding ensures pleasant lying comfort.

The velour-like underside has an anti-slip effect and reliably protects furniture and floors from dirt and hair. Thanks to the light and flexible finish, the plaid is versatile and ideal for daily use in the house. Available in three sizes and three stylish colours, the Dogstyler Plaid adapts perfectly to the needs of your dog and your living style - for more comfort, cleanliness and well-being.

## CHARACTERISTICS

- Versatile, lightweight and flexible
- Easy to clean and hygienic
- Protects furniture and floors from hair, dirt and scratches
- Dimensionally stable
- Heat-insulating

## MATERIAL

Filling: 100% cushioned fleece

Cover: Velour underside / Faux fur top



Schwarz

DOGSTYLER®



# DOG PLAID

## SIZE CHART

SIZE	WIDTH	DEPTH	HEIGHT
S	90 cm	65 cm	4 cm
M	110 cm	75 cm	4 cm
L	120 cm	90 cm	4 cm





# DOG PLAID

## COLOR VARIANTS



BEIGE



GREY



BLACK





# LEASHES & COLLARS





# LEATHER LEASH LUIS ADJUSTABLE

## PRODUCT

With the Luis dog leash you don't just have a leash, but a companion that turns every walk into a small luxury moment. Made of high-quality genuine leather, it has a soft feel that feels comfortable in the hand - even on longer adventures.

But Luis not only scores with style, but also with substance: The soft leather is robust and withstands the challenges of everyday life. Thanks to the adjustability, the leash adapts flexibly to your needs and those of your four-legged friend.

## FEATURES

- High-quality genuine leather
- Soft feel
- Adjustable in length
- Durable & robust material





# LEATHER LEASH LUIS

ADJUSTABLE

SIZE CHART

OVERALL LENGTH	2,4 m	3 m
WIDTH	0,8 mm / 1,2 cm / 1,5 cm	1,8 cm

MATERIAL

Leash: High-quality genuine leather  
Carabiner: chrome-plated

COLORS



BROWN



BLACK



GREY





# LEATHER COLLAR LUIS CLASSIC

## PRODUCT

The Luis dog collar is more than a practical accessory - it combines style, quality and comfort in one. Made of high-quality genuine leather, it impresses with its soft feel, which ensures maximum wearing comfort - even during daily use. Luis convinces not only with its stylish design, but also with its robustness. Whether in the simple or braided version, it offers you the opportunity to adapt the look individually to your dog.

## FEATURES

- High-quality genuine leather
- Soft feel
- Durable & robust material



Classic Grey



# LEATHER COLLAR LUIS

CLASSIC

## SIZE CHART

SIZE	LENGTH	WIDTH
XS	35 cm	1,6 cm
S	40 cm	1,6 cm
S-M	45 cm	2,0 cm
M	50 cm	2,5 cm
L	55 cm	2,5 cm
XL	60 cm	3,0 cm
XXL	65 cm	3,0 cm

## MATERIAL

Collar: High quality genuine leather

Fittings: chrome-plated





# LEATHER COLLAR LUIS BRAIDED

## PRODUCT

The Luis dog collar is more than a practical accessory - it combines style, quality and comfort in one. Made of high-quality genuine leather, it impresses with its soft feel, which ensures maximum wearing comfort - even during daily use. Luis convinces not only with its stylish design, but also with its robustness. Whether in the simple or braided version, it offers you the opportunity to adapt the look individually to your dog.

## FEATURES

- High-quality genuine leather
- Soft feel
- Durable & robust material
- Braided variant





# LEATHER COLLAR LUIS BRAIDED

## SIZE CHART

SIZE	NECK CIRCUMFERENCE	WIDTH
S	40 - 45 cm	2,0 cm
M	45 - 50 cm	2,0 cm
L	50 - 55 cm	2,0 cm
XL	55 - 60 cm	2,0 cm
XXL	55 - 60 cm	2,0 cm

## MATERIAL

Collar: High quality genuine leather  
Fittings: chrome-plated





# LEATHER COLLAR LUIS

## COLORS



CLASSIC  
GREY



CLASSIC  
BLACK



CLASSIC  
BROWN



BRAIDED  
GREY



BRAIDED  
BLACK



BRAIDED  
BROWN



Classic Black



# NEOPREN HARNESS NEOFIT

## PRODUCT

Give your four-legged friend a new feeling of comfort and safety, with our high-quality neoprene harness. The light feel and easy-care neoprene make it a perfect everyday companion. The double-stitched straps at the bottom allow for high tensile strength and provide the necessary security, as well as the practical handle gives you extra control if you need it. An optimal fit is given by the ergonomic cut and the flexible and easy adjustment - whether your dog is small or large. The aluminum neck opening makes it possible for even anxious dogs to wear a harness.

The very soft neoprene provides the necessary padding in sensitive areas. Whether long, extended adventures or a short walk around the block - "Neofit" is your perfect companion.

## FEATURES

- Very light weight neoprene
- Practical handle
- Comfortable neck opening
- Softly padded
- Extra strong due to double-stitched straps at the bottom
- Easy to care for





# NEOPREN HARNESS NEOFIT

## SIZE CHART

SIZE	CHEST MEASUREMENT
XS	37 - 55 cm
S	40 - 59 cm
S-M	50 - 75 cm
M	56 - 77 cm
L	63 – 97 cm
XL	72 - 111 cm

## COLORS



GREEN



BEIGE



GREY

## MATERIAL

- Harness: 70% neoprene  
30% polyester
- D-Ring: Aluminum
- Neck opening: Aluminum



Beige



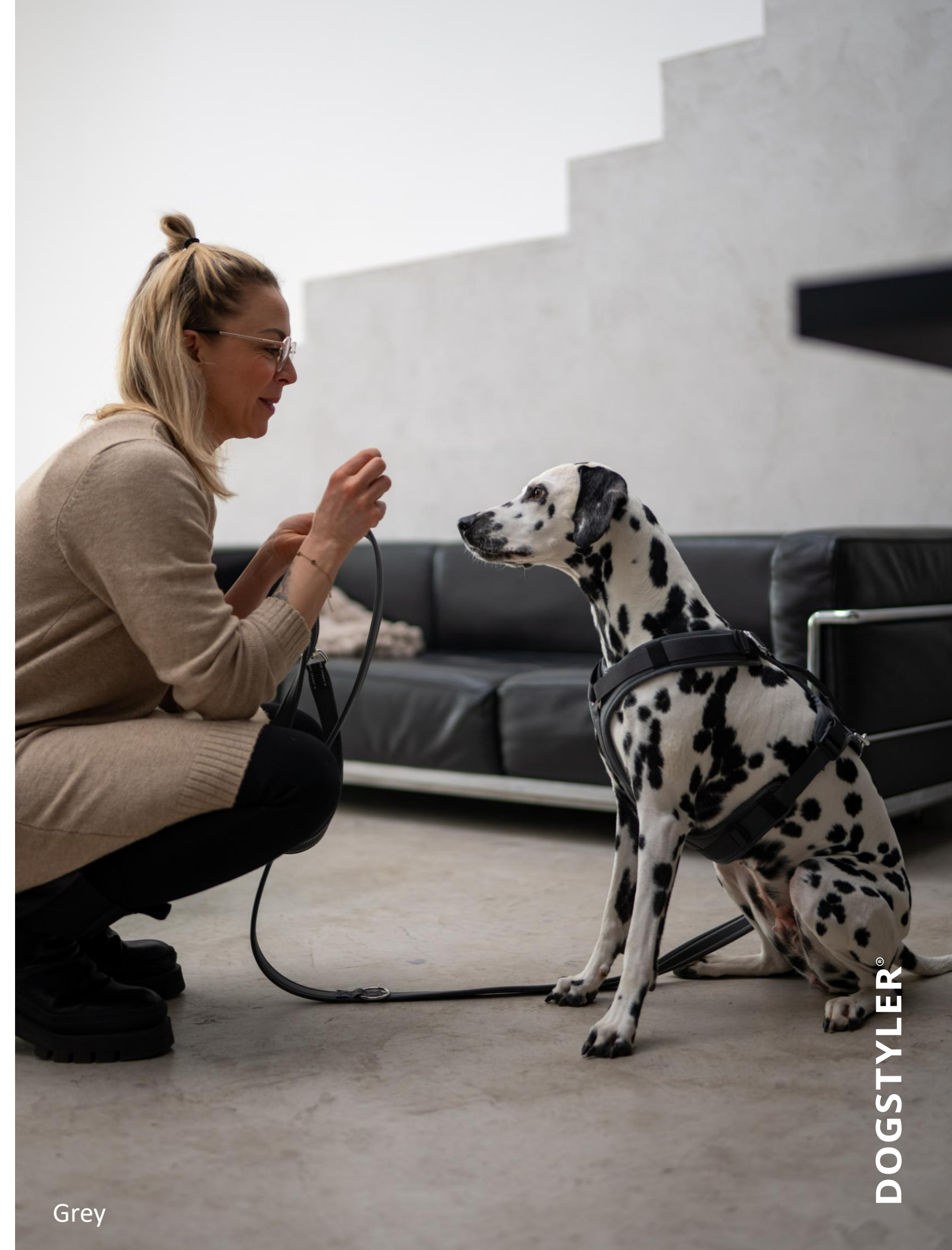
# NEOPREN LEASH NEOFIT ADJUSTABLE

## PRODUCT

For our neoprene harness, we also have the matching leash. It is 3-way adjustable, extremely lightweight and embroidered with reflectors to be visible even in the dark. It is available in three different widths, as well as in three colours.

## FEATURES

- Very light weight neoprene
- 3-way adjustable
- With reflectors
- Softly padded
- Easy to care for



Grey

DOGSTYLER®



# NEOPREN LEASH NEOFIT

ADJUSTABLE

SIZE CHART

SIZE	WIDTH	LENGTH
S	1,2 cm	240 cm
M	1,5 cm	240 cm
L	1,8 cm	240 cm

MATERIAL

Leash: 70% neoprene  
30% polyester

Carabiner: chrome-plated

COLORS



BROWN



GREY



GREEN





„Everyone thinks of  
themselves as having the  
greatest dog in the world.

And none of you is  
wrong."

W.R. Purche





# CONTACT



## Address

PaWorks GmbH  
Westenhellweg 46  
D - 59494 Soest

## E-Mail

[sales@dogstyler.de](mailto:sales@dogstyler.de)  
[info@dogstyler.de](mailto:info@dogstyler.de)

## Telephone

+49 2921 - 944 762 0

## Website

[www.dogstyler.de](http://www.dogstyler.de)