

VIGOR
& SAGE

HEALTHY LIFESTYLE for dogs & cats

10TH YEARS
GLOBAL
BRAND
SINCE 2016

WEIGHT CONTROL



LOTUS LEAF | ADULT

Over 12 Months

REGULAR BREED
COMPLETE DOG FOOD
2 kg, 12 kg

Herbal Highlight

Lotus Leaf

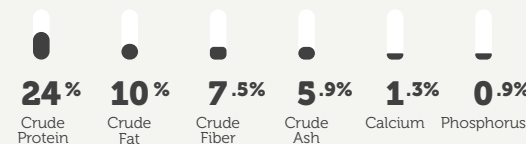
A natural metabolic ally—Lotus Leaf helps reduce fat and carbohydrate absorption while gently promoting fat burning to support a lean, healthy physique.

Hawthorn

This heart-supporting botanical stimulates circulation, reduces inflammation, and encourages fat metabolism—ideal for active weight management.

Cassia seed

Rich in essential fatty acids, Cassia Seed supports smooth digestion and gently detoxifies the digestive tract—helping maintain balance and vitality during weight control.



88% | ANIMAL PROTEIN | 26% | Fresh Turkey Meat

Composition

Fresh boneless turkey meat (26.0%), dried potato, dried peas, dried turkey (14.7%), dried beet pulp, dried sweet potato, cellulose, salmon oil, chicken fat, brewer's yeast, choline chloride, inulin (source of FOS), seaweed (0.2%), lotus leaf (0.14%), cassia seed (0.14%), hawthorn (0.14%), linseed oil, dried carrot, dried banana, dried lemon, dried celery, dried cranberry, yucca, glucosamine, chondroitin sulphate.

Analytical Constituents

Crude protein 24.0%, crude fat 10.0%, crude ash 5.9%, crude fibre 7.5%, moisture 8.0%, calcium 1.3%, phosphorus 0.9%.

Additives, Nutritional Additives (per kg)

Vitamin A: 18,000 IU, Vitamin D₃: 1,800 IU, Vitamin E: 500 IU (natural antioxidants), copper (cupric sulphate, pentahydrate) 10 mg, copper (cupric chelate of glycine hydrate) 5 mg, iron (ferrous sulphate, monohydrate) 70 mg, iron (ferrous chelate of glycine hydrate) 35 mg, manganese (manganous oxide) 50 mg, manganese (manganese chelate of glycine hydrate) 25mg, zinc (zinc sulphate, monohydrate) 100mg, zinc (zinc chelate of glycine hydrate) 50 mg, iodine (calcium iodate, anhydrous) 2 mg, selenium (sodium selenite) 0.1 mg.

LOW SENSITIVITY



YAM | ADULT

Over 12 Months

REGULAR BREED
COMPLETE DOG FOOD
2 kg, 12 kg

Herbal Highlight

Yam

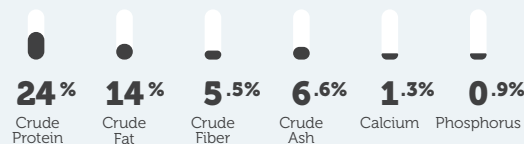
Naturally rich in vitamin C, yam soothes digestive systems, encourages healthy bile flow, and helps reduce intestinal inflammation—nurturing comfort from within.

Poria

A traditional botanical that aids digestion, supports immune health, enhances urinary balance, and nurtures the skin—contributing to overall canine wellness.

Coix Seed

A premium botanical source of fatty acids, Coix Seed helps preserve skin elasticity and promotes a radiant, silky coat in adult dogs.



88% | ANIMAL PROTEIN | 26% | Fresh Whitefish Meat

Composition

Fresh whitefish (26.0%), dried potato, dried peas, dried whitefish (13.0%), chicken fat, dried beet pulp, dried sweet potato, lignocellulose, brewer's yeast, salmon oil, linseed, dried carrot, dried apple, dried banana, dried mango, dried tomato, dried kiwi, dried celery, dried cranberry, lecithin, seaweed, inulin, licorice root (0.10%), yam (0.10%), coix seed (0.10%), poria (0.10%), glucosamine, yucca, chondroitin sulfate.

Analytical Constituents

Crude protein 24.0% Crude fat 14.0% Crude fiber 5.5% Crude ash 6.6% Calcium 1.3% Phosphorus 0.9% Moisture 8.0%

Additives, Nutritional Additives (per kg)

Vitamin A: 18,000 IU, Vitamin D₃: 1,800 IU, Vitamin E: 500 IU (natural antioxidants), copper (cupric sulphate, pentahydrate) 10 mg, copper (cupric chelate of glycine hydrate) 5 mg, iron (ferrous sulphate, monohydrate) 70 mg, iron (ferrous chelate of glycine hydrate) 35 mg, manganese (manganous oxide) 50 mg, manganese (manganese chelate of glycine hydrate) 25mg, zinc (zinc sulphate, monohydrate) 100mg, zinc (zinc chelate of glycine hydrate) 50 mg, iodine (calcium iodate, anhydrous) 2 mg, selenium (sodium selenite) 0.1 mg.

SPORTING DOG



GINSENG | ADULT

Over 12 Months

ALL BREED
COMPLETE DOG FOOD
2 kg, 12 kg

Herbal Highlight

Ginseng

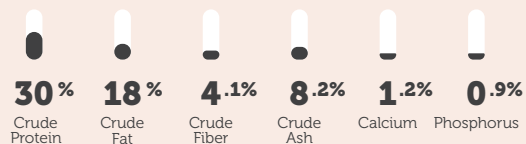
A powerful adaptogen known to reduce stress, combat inflammation, and enhance immune resilience—supporting overall vitality and graceful aging in adult dogs.

Poria

A traditional botanical that aids digestion, supports immune health, enhances urinary balance, and nurtures the skin—contributing to overall canine wellness.

Goji Berry

A superfruit for your dog's vitality—rich in antioxidants to protect the nervous system, support immunity, and promote balanced energy from inside.



88% | ANIMAL PROTEIN | 26% | Fresh Chicken Meat

Composition

Fresh boneless chicken meat (26.0%), dried chicken (16.4%), dried peas, dried potato, chicken fat, dried beet pulp, brewer's yeast, salmon oil, egg powder, linseed oil, lecithin, inulin (source of FOS), seaweed (0.2%), choline chloride, ginseng (0.14%), poria (0.14%), goji berry (0.14%), glucosamine (0.1%), chondroitin sulphate (0.1%), dried apple, dried carrot, dried banana, dried kiwi, dried celery, yucca.

Analytical Constituents

Crude protein 30.0%, crude fat 18.0%, crude ash 8.2%, crude fibre 4.1%, moisture 8.0%, calcium 1.2%, phosphorus 0.9%, omega-3 fatty acids 1.1%, omega-6 fatty acids 2.7%.

Additives, Nutritional Additives (per kg)

Vitamin A: 18,000 IU, Vitamin D₃: 1,800 IU, Vitamin E: 500 IU (natural antioxidants), copper (cupric sulphate, pentahydrate) 10 mg, copper (cupric chelate of glycine hydrate) 5mg, iron (ferrous sulphate, monohydrate) 70 mg, iron (ferrous chelate of glycine hydrate) 35 mg, manganese (manganous oxide) 50 mg, manganese (manganese chelate of glycine hydrate) 25mg, zinc (zinc sulphate, monohydrate) 100mg, zinc (zinc chelate of glycine hydrate) 50 mg, iodine (calcium iodate, anhydrous) 2 mg, selenium (sodium selenite) 0.1 mg, L-carnitine 50mg.

FREEZE-DRIED



FREEZE-DRIED | ALS

All Life Stages

ALL BREED
COMPLETE DOG FOOD
1.2 kg

Herbal Highlight

Lily Root

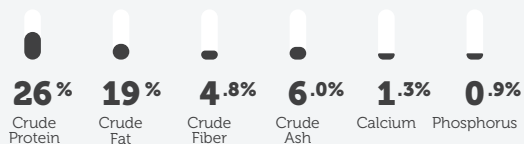
Naturally rich in fatty acids, Lily Root supports skin integrity, enhances coat luster, and offers antifungal and anti-inflammatory benefits—elevating both beauty and comfort.

Coix Seed

A premium botanical source of fatty acids, Coix Seed helps preserve skin elasticity and promotes a radiant, silky coat in adult dogs.

Angelica Root

Traditionally revered for boosting blood circulation, Angelica Root stimulates collagen and skin cell renewal—nurturing healthy, youthful skin from within.



88% | ANIMAL PROTEIN | 26% | Fresh Salmon Meat

Composition

fresh salmon (26.0%), dried potato, dried peas, freeze-dried salmon trout nuggets (10.0%), dried salmon (7.9%), dried beet pulp, chicken fat, dried sweet potato, cellulose, brewer's yeast, salmon oil, lecithin, inulin (source of FOS), seaweed (0.2%), lily root (0.14%), coix seed (0.14%), angelica root (0.14%), choline chloride, linseed oil, dried carrot, dried plum, dried apple, dried lemon, dried mango, yucca, glucosamine, chondroitin sulphate.

Analytical Constituents

Crude protein 26.0%, Crude fat 19.0%, Crude fiber 4.8%, Crude ash 6.0%, Calcium 1.3%, Phosphorus 0.9%, Moisture 8.0%

Additives, Nutritional Additives (per kg)

Vitamin A: 18,000 IU, Vitamin D₃: 1,800 IU, Vitamin E: 500 IU (natural antioxidants), copper (cupric sulphate, pentahydrate) 10 mg, copper (cupric chelate of glycine hydrate) 5 mg, iron (ferrous sulphate, monohydrate) 70 mg, iron (ferrous chelate of glycine hydrate) 35 mg, manganese (manganous oxide) 50 mg, manganese (manganese chelate of glycine hydrate) 25 mg, zinc (zinc sulphate, monohydrate) 100 mg, zinc (zinc chelate of glycine hydrate) 50mg, iodine (calcium iodate, anhydrous) 2 mg, selenium (sodium selenite) 0.1mg, flavours, rosemary extract, antioxidants.

SUPER PALATABILITY

"Simply irresistible"

90%
Nutritious
Kibble

Fresh
Salmon
Meat



Herbs



10%
Freeze-Dried
Salmon
Nuggets

1 Freeze-Dried
Nugget ≈ 4 Fresh Trout
Pieces

WHY CHOOSE VIGOR AND SAGE?



Mono Animal Protein

Carefully selected to minimize allergens and support optimal digestion. A pure source of high-quality protein for sensitive pets



Boneless Fresh Meat

Rich in essential amino acids, vitamins, and minerals—our boneless cuts ensure maximum bioavailability and superior nutritional value.



Grain-Free Formula

Designed for better tolerance. Eliminating grains helps reduce common food sensitivities and supports a healthier gut environment.



Functional Herbs

Infused with premium, carefully chosen herbs known for their natural anti-inflammatory and antioxidant properties—to nourish, balance, and elevate your pet's well-being.

WELL-BEING

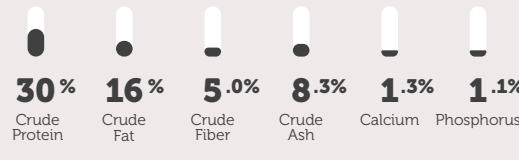
WOLFBERRY | PUPPY

Up to 12 Months

REGULAR BREED
COMPLETE DOG FOOD
2 kg, 12 kg

Herbal Highlight

- Goji Berry (Wolfberry)**
A superfruit for your puppy's vitality—rich in antioxidants to protect the nervous system, support immunity, and promote balanced energy from the very start.
- Tangerine Peel**
Gentle on tiny tummies, this fragrant peel aids digestion while nurturing delicate skin and respiratory health—perfect for growing puppies.
- Yam**
Naturally rich in vitamin C, yam soothes young digestive systems, encourages healthy bile flow, and helps reduce intestinal inflammation—nurturing comfort from within.



88% | ANIMAL PROTEIN | 26% | Fresh Chicken Meat

WELL-BEING

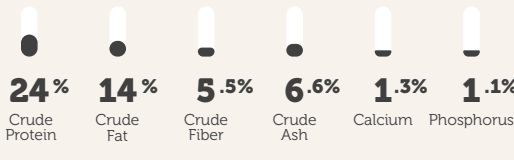
GINSENG | ADULT

Over 12 Months

SMALL BREED
COMPLETE DOG FOOD
2 kg, 6 kg

Herbal Highlight

- Ginseng**
A powerful adaptogen known to reduce stress, combat inflammation, and enhance immune resilience—supporting overall vitality and graceful aging in adult dogs.
- Poria**
A traditional botanical that aids digestion, supports immune health, enhances urinary balance, and nurtures the skin—contributing to overall canine wellness.
- Wild Chrysanthemum**
Rich in bioactive oils, vitamins, and trace minerals—this elegant flower supports skin health and provides natural micronutrient reinforcement.



88% | ANIMAL PROTEIN | 26% | Fresh Chicken Meat

WELL-BEING

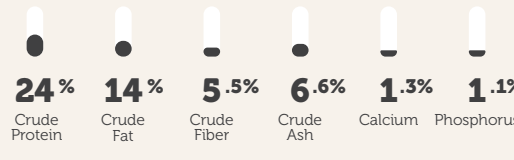
GINSENG | ADULT

Over 12 Months

REGULAR BREED
COMPLETE DOG FOOD
2 kg, 12 kg

Herbal Highlight

- Ginseng**
A powerful adaptogen known to reduce stress, combat inflammation, and enhance immune resilience—supporting overall vitality and graceful aging in adult dogs.
- Poria**
A traditional botanical that aids digestion, supports immune health, enhances urinary balance, and nurtures the skin—contributing to overall canine wellness.
- Wild Chrysanthemum**
Rich in bioactive oils, vitamins, and trace minerals—this elegant flower supports skin health and provides natural micronutrient reinforcement.



88% | ANIMAL PROTEIN | 26% | Fresh Chicken Meat

WELL-BEING

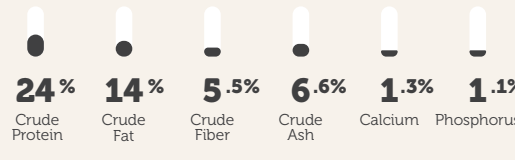
GINSENG | ADULT

Over 12 Months

LARGE BREED
COMPLETE DOG FOOD
12 kg

Herbal Highlight

- Ginseng**
A powerful adaptogen known to reduce stress, combat inflammation, and enhance immune resilience—supporting overall vitality and graceful aging in adult dogs.
- Poria**
A traditional botanical that aids digestion, supports immune health, enhances urinary balance, and nurtures the skin—contributing to overall canine wellness.
- Wild Chrysanthemum**
Rich in bioactive oils, vitamins, and trace minerals—this elegant flower supports skin health and provides natural micronutrient reinforcement.



88% | ANIMAL PROTEIN | 26% | Fresh Chicken Meat

WELL-BEING

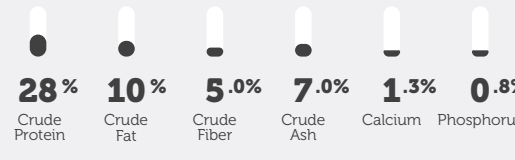
ASTRAGALUS | ADULT

Over (S) 6 Years Old / (M/L) 8 Years Old

ALL BREED
COMPLETE DOG FOOD
2 kg, 12 kg

Herbal Highlight

- Astragalus**
A revered botanical rich in antioxidants, Astragalus helps strengthen the immune system while supporting heart, liver, and kidney function—vital for graceful aging.
- Hawthorn**
Known for its cardiovascular benefits, Hawthorn gently stimulates circulation, reduces inflammation, and may support healthy metabolism and fat processing in senior dogs.
- Licorice**
A soothing herb that protects the digestive tract, supports respiratory health, and offers powerful anti-inflammatory, antiviral, and antibacterial properties—ideal for maintaining senior vitality.



88% | ANIMAL PROTEIN | 26% | Fresh Turkey Meat

BEAUTY HAIR & SKIN

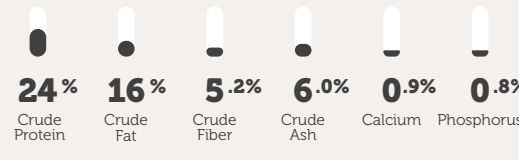
LILY ROOT | ADULT

Over 12 Months

SMALL BREED
COMPLETE DOG FOOD
2 kg, 6 kg

Herbal Highlight

- Lily Root**
Naturally rich in fatty acids, Lily Root supports skin integrity, enhances coat luster, and offers antifungal and anti-inflammatory benefits—elevating both beauty and comfort.
- Coix Seed**
A premium botanical source of fatty acids, Coix Seed helps preserve skin elasticity and promotes a radiant, silky coat in adult dogs.
- Angelica Root**
Traditionally revered for boosting blood circulation, Angelica Root stimulates collagen and skin cell renewal—nurturing healthy, youthful skin from within.



88% | ANIMAL PROTEIN | 26% | Fresh Salmon Meat

BEAUTY HAIR & SKIN

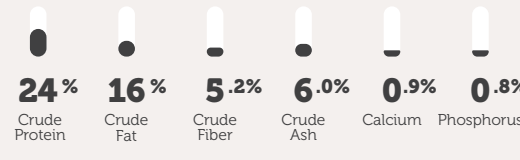
LILY ROOT | ADULT

Over 12 Months

REGULAR BREED
COMPLETE DOG FOOD
2 kg, 12 kg

Herbal Highlight

- Lily Root**
Naturally rich in fatty acids, Lily Root supports skin integrity, enhances coat luster, and offers antifungal and anti-inflammatory benefits—elevating both beauty and comfort.
- Coix Seed**
A premium botanical source of fatty acids, Coix Seed helps preserve skin elasticity and promotes a radiant, silky coat in adult dogs.
- Angelica Root**
Traditionally revered for boosting blood circulation, Angelica Root stimulates collagen and skin cell renewal—nurturing healthy, youthful skin from within.



88% | ANIMAL PROTEIN | 26% | Fresh Salmon Meat

Composition

Fresh boneless chicken meat (26.0%), dried chicken (21.0%), dried peas, dried potato, dried beet pulp, chicken fat, dried sweet potato, salmon oil, brewer's yeast, cellulose, lecithin, inulin (source of FOS), seaweed (0.2%), Goji berry (0.14%), tangerine peel (0.14%), yam (0.14%), choline chloride, linseed oil, dried carrot, dried plum, dried apple, dried banana, dried kiwi, yucca, glucosamine, chondroitin sulphate.

Analytical Constituents

Crude protein 30.0%, crude fat 16%, crude ash 8.3%, crude fibre 5.0%, moisture 8.0%, calcium 1.3%, phosphorus 1.1%

Additives, Nutritional Additives (per kg)

Vitamin A: 18,000 IU, Vitamin D₃: 1,800 IU, Vitamin E: 500 IU (natural antioxidants), copper (cupric sulphate, pentahydrate) 10 mg, copper (cupric chelate of glycine hydrate) 5 mg, iron (ferrous sulphate, monohydrate) 70 mg, iron (ferrous chelate of glycine hydrate) 35 mg, manganese (manganous oxide) 50 mg, manganese (manganese chelate of glycine hydrate) 25mg, zinc (zinc sulphate, monohydrate) 100mg, zinc (zinc chelate of glycine hydrate) 50mg, iodine (calcium iodate, anhydrous) 2 mg, selenium(sodium selenite) 0.1 mg.

Composition

Fresh boneless chicken meat (26.0%), dried potato, dried peas, dried chicken (14.6%), dried beet pulp, dried sweet potato, chicken fat, salmon oil, cellulose, brewer's yeast, lecithin, inulin (source of FOS), Seaweed (0.2%),choline chloride, ginseng (0.14%), poria (0.14%), wild chrysanthemum (0.14%), linseed oil, dried carrot, dried mango, dried tomato, dried lemon, dried apple, yucca, glucosamine, chondroitin sulphate.

Analytical Constituents

Crude protein 24.0%, crude fat 14.0%, crude ash 6.6%, crude fibre 5.5%, moisture 8.0%, calcium 1.3%, phosphorus 1.1%.

Additives, Nutritional Additives (per kg)

Vitamin A: 18,000 IU, VitaminD₃: 1,800 IU, Vitamin E: 500 IU (natural antioxidants), copper (cupric sulphate, pentahydrate) 10 mg, copper (cupric chelate of glycine hydrate) 5mg, iron (ferrous sulphate, monohydrate) 70 mg, iron (ferrous chelate of glycine hydrate) 35 mg, manganese (manganous oxide) 50 mg, manganese (manganese chelate of glycine hydrate) 25mg, zinc (zinc sulphate, monohydrate) 100mg, zinc (zinc chelate of glycine hydrate) 50 mg, iodine (calcium iodate, anhydrous) 2 mg, selenium (sodium selenite) 0.1 mg.

Composition

Fresh boneless chicken meat (26.0%), dried potato, dried peas, dried chicken (14.6%),dried beet pulp, dried sweet potato, chicken fat, salmon oil, cellulose, brewer's yeast, lecithin, inulin (source of FOS), Seaweed (0.2%),choline chloride, ginseng (0.14%), poria (0.14%), wild chrysanthemum (0.14%), linseed oil, dried carrot, dried mango, dried tomato, dried lemon, dried apple, yucca, glucosamine, chondroitin sulphate.

Analytical Constituents

Crude protein 24.0%, crude fat 14.0%, crude ash 6.6%, crude fibre 5.5%, moisture 8.0%, calcium 1.3%, phosphorus 1.1%.

Additives, Nutritional Additives (per kg)

Additives, Nutritional Additives (per kg): Vitamin A: 18,000 IU, Vitamin D₃: 1,800 IU, Vitamin E: 500 IU (natural antioxidants), copper (cupric sulphate, pentahydrate) 10 mg, copper (cupric chelate of glycine hydrate) 5 mg, iron (ferrous sulphate, monohydrate) 70 mg, iron (ferrous chelate of glycine hydrate) 35 mg, manganese (manganous oxide) 50 mg, manganese (manganese chelate of glycine hydrate) 25mg, zinc (zinc sulphate, monohydrate) 100mg, zinc (zinc chelate of glycine hydrate) 50 mg, iodine (calcium iodate, anhydrous) 2 mg, selenium (sodium selenite) 0.1 mg.

Composition

Fresh boneless chicken meat (26.0%), dried potato, dried peas, dried chicken (14.6%), dried beet pulp, dried sweet potato, chicken fat, salmon oil, cellulose, brewer's yeast, lecithin, inulin (source of FOS), seaweed (0.2%),choline chloride, ginseng (0.14%), poria (0.14%), wild chrysanthemum (0.14%), linseed oil, dried carrot, dried mango, dried tomato, dried lemon, dried apple, yucca, glucosamine, chondroitin sulphate.

Analytical Constituents

Crude protein 24.0%, crude fat 14.0%, crude ash 6.6%, crude fibre 5.5%, moisture 8.0%, calcium 1.3%, phosphorus 1.1%.

Additives, Nutritional Additives (per kg)

Vitamin A: 18,000 IU, Vitamin D₃: 1,800 IU, Vitamin E: 500 IU (natural antioxidants), copper (cupric sulphate, pentahydrate) 10 mg, copper (cupric chelate of glycine hydrate) 5 mg, iron (ferrous sulphate, monohydrate) 70 mg, iron (ferrous chelate of glycine hydrate) 35 mg, manganese (manganous oxide) 50 mg, manganese (manganese chelate of glycine hydrate) 25mg, zinc (zinc sulphate, monohydrate) 100mg, zinc (zinc chelate of glycine hydrate) 50 mg, iodine (calcium iodate, anhydrous) 2 mg, selenium (sodium selenite) 0.1 mg.

Composition

Fresh boneless turkey meat (26.0%),dried potato, dried peas, dried turkey (11.9%), dried beet pulp, dried sweet potato, pea protein, alfalfa, salmon oil, brewer's yeast, chicken fat, linseed oil, choline chloride, inulin (source of FOS), seaweed (0.2%), astragalus (0.14%), Licorice (0.14%), hawthorn (0.14%), dried carrot, dried plum, dried lemon, dried banana, dried cranberry, yucca, glucosamine, chondroitin sulphate.

Analytical Constituents

Crude protein 28.0%, crude fat 10.0%, crude ash 7.0%, crude fibre 5.0%, moisture 8.0%, calcium 1.3%, phosphorus 0.8%.

Additives, Nutritional Additives (per kg)

Vitamin A: 18,000 IU, Vitamin D₃: 1,800 IU, Vitamin E: 500 IU (natural antioxidants), copper (cupric sulphate, pentahydrate) 10 mg, copper (cupric chelate of glycine hydrate) 5 mg, iron (ferrous sulphate, monohydrate) 70 mg, iron (ferrous chelate of glycine hydrate) 35 mg, manganese (manganous oxide) 50 mg, manganese (manganese chelate of glycine hydrate) 25mg, zinc (zinc sulphate, monohydrate) 100mg, zinc (zinc chelate of glycine hydrate) 50 mg, iodine (calcium iodate, anhydrous) 2 mg, selenium (sodium selenite) 0.1 mg, L-carnitine250mg.

Composition

Fresh Salmon (26.0%), dried potato, dried peas, dried salmon (79%), dried beet pulp, chicken fat, dried sweet potato, cellulose, brewer's yeast, salmon oil, lecithin, inulin (source of FOS), seaweed (0.2%), lily root (0.14%), coix seed (0.14%), angelica root (0.14%),choline chloride, linseed oil, dried carrot, dried plum, dried apple, dried lemon, dried mango, yucca, glucosamine, chondroitin sulphate.

Analytical Constituents

Crude protein 24.0%, crude fat 16.0%, crude ash 6.0%, crude fibre 5.2%, moisture 8.0%, calcium 0.9%, phosphorus 0.8%, omega-3 fatty acids 0.8% ,omega-6 fatty acids 1.3%.

Additives, Nutritional Additives (per kg)

Vitamin A: 18,000 IU, Vitamin D₃: 1,800 IU, Vitamin E: 500 IU (natural antioxidants), copper (cupric sulphate, pentahydrate) 10 mg, copper (cupric chelate of glycine hydrate) 5 mg, iron (ferrous sulphate, monohydrate) 70 mg, iron (ferrous chelate of glycine hydrate) 35 mg, manganese (manganous oxide) 50 mg, manganese (manganese chelate of glycine hydrate) 25mg, zinc (zinc sulphate, monohydrate) 100mg, zinc (zinc chelate of glycine hydrate) 50 mg, iodine (calcium iodate, anhydrous) 2 mg, selenium (sodium selenite) 0.1 mg.

Composition

Fresh Salmon (26.0%), dried potato, dried peas, dried salmon (79%), dried beet pulp, chicken fat, dried sweet potato, cellulose, brewer's yeast, salmon oil, lecithin, inulin (source of FOS), seaweed (0.2%), lily root (0.14%), coix seed (0.14%), angelica root (0.14%), choline chloride, linseed oil, dried carrot, dried plum, dried apple, dried lemon, dried mango, yucca, glucosamine, chondroitin sulphate.

Analytical Constituents

Crude protein 24.0%, crude fat 16.0%, crude ash 6.0%, crude fibre 5.2%, moisture 8.0%, calcium 0.9%, phosphorus 0.8%, omega-3 fatty acids 0.8% ,omega-6 fatty acids 1.3%.

Additives, Nutritional Additives (per kg)

Vitamin A: 18,000 IU, Vitamin D₃: 1,800 IU, Vitamin E: 500 IU (natural antioxidants), copper (cupric sulphate, pentahydrate) 10 mg, copper (cupric chelate of glycine hydrate) 5 mg, iron (ferrous sulphate, monohydrate) 70 mg, iron (ferrous chelate of glycine hydrate) 35 mg, manganese (manganous oxide) 50 mg, manganese (manganese chelate of glycine hydrate) 25mg, zinc (zinc sulphate, monohydrate) 100mg, zinc (zinc chelate of glycine hydrate) 50 mg, iodine (calcium iodate, anhydrous) 2 mg, selenium(sodium selenite) 0.1 mg.