

TECHNICAL-COMMERCIAL DOSSIER



natura  
diet



**In this dossier you will find the complete information and nutritional values of the Natura Diet range of paté products.**

Introduction

**Brand presentation, 8**

**Range in paté, 9**

**From nature to their plate, 10**

Technical-commercial sheets

**Chicken & Veggies, 14**

**Ibérico & Veggies, 16**

**Beef & Veggies, 18**

**Fish & Veggies, 20**

**Duck & Veggies, 22**

**Puppy, 24**

**Light, 26**



# Introduction



**Brand presentation**  
**Range in paté**  
**From nature to their plate**



## Scientifically natural

**Natura Diet is high-quality natural food for pets, created from innovation and nature's ancestral.**

**We provide our products taking into account your pet's health and well-being, while protecting their nature and nature itself.**

## And now also in paté.

Our natural, healthy and environmentally friendly recipes, now also in paté format.

A tasty range, cooked in a bain-marie, so you can provide greater variety to your well-being.

All our products are designed and produced with:



<p>NO ARTIFICIAL COLORS OR FLAVORS</p>	<p>ANIMAL PROTEIN AS FIRST INGREDIENT</p>	<p>GLUTEN FREE HAT</p>
<p>FUNCTIONAL INGREDIENTS THAT STRENGTHEN THE IMMUNE SYSTEM</p>	<p>IN CONSTANT R&amp;D</p>	

## Chicken & Veggies

Nutritious and delicious pâté based on fresh chicken and highly digestible vegetables.

## Iberico & Veggies

A Mediterranean recipe with Iberian pork and olive oil.

## Beef & Veggies

Complete and tasty pâté based on beef, vegetables and spices. Without cereals.

## Fish & Veggies

High protein pâté based on fresh fish, vegetables and spices. Without cereals.



## Duck & Veggies

Special recipe with duck, chicken, vegetables and Mediterranean spices. Without cereals.

## Puppy

Complete food in pâté based on fresh chicken that nourishes puppies from weaning to adulthood.

## Light

Take care of your dog's weight with a recipe based on fresh turkey, white fish, vegetables and spices that help his digestion.

# Technical-commercial sheets

**Chicken & Veggies**  
**Iberico & Veggies**  
**Beef & Veggies**  
**Fish & Veggies**  
**Duck & Veggies**  
**Puppy**  
**Light**







NET WEIGHT

**400g**

**Complete, natural and nutritious food, biologically adapted for the enjoyment of adult dogs.**

**Natura Diet**  
CHICKEN & VEGS

**INSTRUCTIONS FOR USE**

Serve the food using the recommended daily ration table as a guide. These amounts are approximate and should be subsequently adjusted to the animal's energy requirements. The daily portion should be readjusted if you provide your dog another type of food. Keep clean and fresh water at its disposal. Keep at room temperature in a dry place. Once opened, keep refrigerated and consume within 72 hours.

**TABLE OF DAILY SERVINGS (1 or 2 FEEDS)**

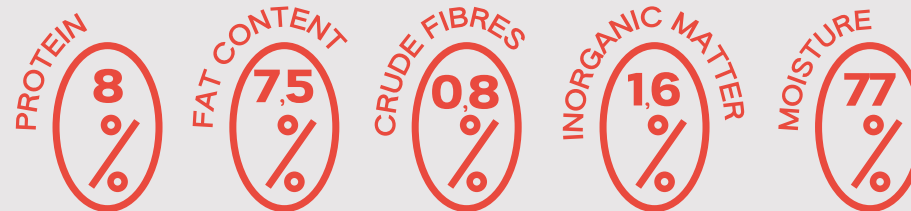
WEIGHT (KG)	DAILY SERVINGS (CAN)	MIX-FEEDING (can/g ND Daily Food)
1-5	1/2	1/4 + 20g
6-10	3/4	1/2 + 50g
11-15	1 + 1/4	1/2 + 100g
>16	1 + 1/2	1 + 70g



**COMPOSITION**

**Fresh chicken (43%), rice (3%), potato, brewer's yeast, carrot, broccoli and leek (1%), vegetable fibres, peas, linseed oil, salmon oil, dehydrated marine krill, olive oil.**  
**Prosafe complex: extracts of rosemary, turmeric, grapefruit and cloves.**

**ANALYTICAL CONSTITUENTS**



**NUTRITIONAL ADDITIVES/KG**

- (3a672a) Vitamin A: 1000 UI
- (3a671) Vitamin D3: 100 UI
- (3a700i) Vitamin E: 20 UI
- (3b201) Iodide: 1 mg
- (3b405) Copper: 3 mg
- (3b503) Manganous: 1 mg
- (3b801) Selenium: 0.1 mg





NET WEIGHT

**400g**

**Complete, natural and nutritious food, biologically adapted for the enjoyment of adult dogs.**

**Natura Diet**  
IBERICO & VEGS

INSTRUCTIONS FOR USE

Serve the food using the recommended daily ration table as a guide. These amounts are approximate and should be subsequently adjusted to the animal's energy requirements. The daily portion should be readjusted if you provide your dog another type of food. Keep clean and fresh water at its disposal. Keep at room temperature in a dry place. Once opened, keep refrigerated and consume within 72 hours.

TABLE OF DAILY SERVINGS  
(1 or 2 FEEDS)

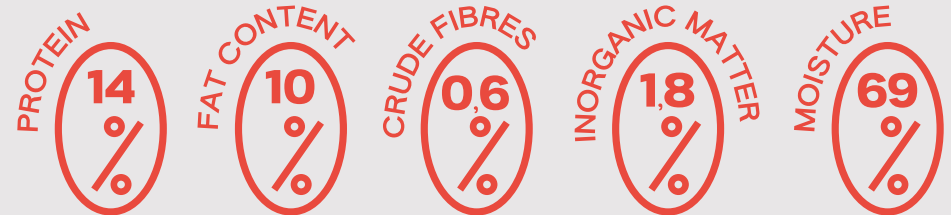
WEIGHT (KG)	DAILY SERVINGS (CAN)	MIX-FEEDING (can/g ND Iberico & Rice)
1-5	1/2	1/4 + 20g
6-10	3/4	1/2 + 50g
11-15	1 + 1/4	1/2 + 100g
>16	1 + 1/2	1 + 70g



COMPOSITION

**Fresh meat (83%) turkey, Iberian pork (35%), chicken, potato (3%), brewer's yeast, carrot, broccoli and leek (1%), salmon oil, vegetable fibres, olive oil.**  
**Prosafe complex: extracts of rosemary, turmeric, grapefruit and cloves.**

ANALYTICAL CONSTITUENTS



NUTRITIONAL ADDITIVES/KG

- (3a672a) Vitamin A: 1000 UI
- (3a671) Vitamin D3: 100 UI
- (3a700i) Vitamin E: 20 UI
- (3b201) Iodide: 1 mg
- (3b405) Copper: 3 mg
- (3b503) Manganous: 1 mg
- (3b603) Zinc: 30 mg
- (3b801) Selenium: 0.1 mg



**Natura Diet**  
BEEF & VEGS

NET WEIGHT

**400g**

**Complete, natural and nutritious food, biologically adapted for the enjoyment of adult dogs.**

INSTRUCTIONS FOR USE

Serve the food using the recommended daily ration table as a guide. These amounts are approximate and should be subsequently adjusted to the animal's energy requirements. The daily portion should be readjusted if you provide your dog another type of food. Keep clean and fresh water at its disposal. Keep at room temperature in a dry place. Once opened, keep refrigerated and consume within 72 hours.

TABLE OF DAILY SERVINGS  
(1 or 2 FEEDS)

WEIGHT (KG)	DAILY SERVINGS (CAN)	MIX-FEEDING (can/g ND Lamb & Rice)
1-5	1/2	1/4 + 20g
6-10	3/4	1/2 + 70g
11-15	1 + 1/4	1 + 40g
>16	1 + 1/2	1 + 70g

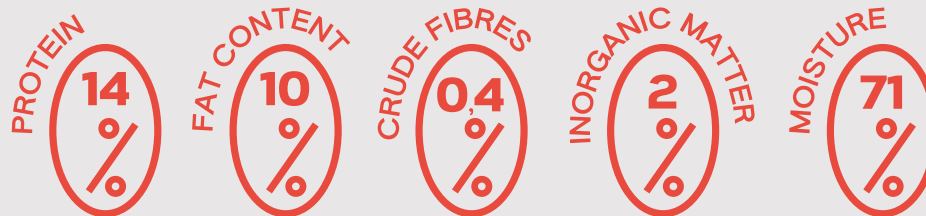


COMPOSITION

**Fresh meat (83%) chicken, (35%) veal, potato, carrot, leek and broccoli (1%), salmon oil, vegetable fibres, brewer's yeast, olive oil.**

**Prosafe complex: extracts of rosemary, turmeric, grapefruit and cloves.**

ANALYTICAL CONSTITUENTS



NUTRITIONAL ADDITIVES/KG

- (3a672a) Vitamin A: 1000 UI
- (3a671) Vitamin D3: 100 UI
- (3a700i) Vitamin E: 20 UI
- (3b201) Iodide: 1 mg
- (3b405) Copper: 3 mg
- (3b503) Manganous: 1 mg
- (3b603) Zinc: 30 mg
- (3b801) Selenium: 0.1 mg



**Natura Diet**  
FISH & VEGS

NET WEIGHT

**400g**

**Complete, natural and nutritious food, biologically adapted for the enjoyment of adult dogs.**

INSTRUCTIONS FOR USE

Serve the food using the recommended daily ration table as a guide. These amounts are approximate and should be subsequently adjusted to the animal's energy requirements. The daily portion should be readjusted if you provide your dog another type of food. Keep clean and fresh water at its disposal. Keep at room temperature in a dry place. Once opened, keep refrigerated and consume within 72 hours.

TABLE OF DAILY SERVINGS  
(1 or 2 FEEDS)

WEIGHT (KG)	DAILY SERVINGS (CAN)	MIX-FEEDING (can/g ND Fish & Rice)
1-5	1/2	1/4 + 20g
6-10	3/4	1/2 + 50g
11-15	1 + 1/4	1/2 + 100g
>16	1 + 1/2	1 + 50g

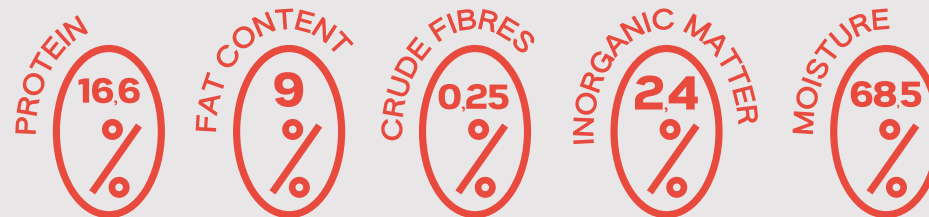


COMPOSITION

**(83%) fresh fish sardine, tuna, trout, sunflower oil, carrot, broccoli and leek (1%), potato (0.5%), red beetroot, olive oil.**

**Prosafe complex: extracts of rosemary, turmeric, grapefruit and cloves.**

ANALYTICAL CONSTITUENTS



NUTRITIONAL ADDITIVES/KG

(3a700i) Vitamin E: 60 UI  
(3b405) Copper: 1 mg  
(3b603) Zinc: 15 mg





NET WEIGHT

**400g**

**Complete, natural and nutritious food, biologically adapted for the enjoyment of adult dogs.**

**Natura Diet**  
DUCK & VEGS

INSTRUCTIONS FOR USE

Serve the food using the recommended daily ration table as a guide. These amounts are approximate and should be subsequently adjusted to the animal's energy requirements. The daily portion should be readjusted if you provide your dog another type of food. Keep clean and fresh water at its disposal. Keep at room temperature in a dry place. Once opened, keep refrigerated and consume within 72 hours.

TABLE OF DAILY SERVINGS  
(1 or 2 FEEDS)

WEIGHT (KG)	DAILY SERVINGS (CAN)	MIX-FEEDING (can/g ND Daily Food)
1-5	1/2	1/4 + 20g
6-10	3/4	1/2 + 50g
11-15	1 + 1/4	1/2 + 100g
>16	1 + 1/2	1 + 70g



COMPOSITION

**Fresh meats (84%) chicken, duck (20%), peas (2%), carrot, broccoli and leek (1%), salmon oil, potato, vegetable fibres, red beetroot, olive oil.**

**Prosafe complex: extracts of rosemary, turmeric, grapefruit and cloves.**

ANALYTICAL CONSTITUENTS



NUTRITIONAL ADDITIVES/KG

- (3a672a) Vitamin A: 1000 UI
- (3a671) Vitamin D3: 100 UI
- (3a700i) Vitamin E: 20 UI
- (3b201) Iodide: 1 mg
- (3b405) Copper: 3 mg
- (3b503) Manganous: 1 mg
- (3b603) Zinc: 30 mg
- (3b801) Selenium: 0.1 mg



NET WEIGHT

**400g**

**Complete, natural and nutritious food, biologically adapted for the enjoyment of adult dogs.**

**Natura Diet**  
PUPPY

INSTRUCTIONS FOR USE

Serve the food using the recommended daily ration table as a guide. These amounts are approximate and should be subsequently adjusted to the animal's energy requirements. The daily portion should be readjusted if you provide your dog another type of food. Keep clean and fresh water at its disposal. Keep at room temperature in a dry place. Once opened, keep refrigerated and consume within 72 hours.

TABLE OF DAILY SERVINGS  
(1 or 2 FEEDS)

WEIGHT (KG)	DAILY SERVINGS (CAN)	MIX-FEEDING (can/g ND Puppy Junior)
0,5	1/4	1/4
1	1/2	1/4 + 20g
2	3/4	1/2 + 20g
4	1	1/2 + 70g
6	1 + 1/2	1 + 50g
8	1 + 3/4	1 + 100g
10	2	1 + 150g
>15	3	2 + 100g



COMPOSITION

**Fresh chicken (45%), dehydrated cheese, potato (1.5%), linseed oil, brewer's yeast, dried carrot, leek and broccoli (1%), peas, salt.  
Prosafe complex: extracts of rosemary, turmeric, grapefruit and cloves.**

ANALYTICAL CONSTITUENTS



NUTRITIONAL ADDITIVES/KG

(3a672a) Vitamin A: 1000 UI  
(3a671) Vitamin D3: 100 UI  
(3a700i) Vitamin E: 20 UI  
(3b201) Iodide: 1 mg  
(3b405) Copper: 3 mg  
(3b503) Manganous: 1 mg  
(3b603) Zinc: 30 mg  
(3b801) Selenium: 0.1 mg

TECHNOLOGICAL ADDITIVES/KG

(1a330) Citric acid: 1.25 mg



NET WEIGHT

**400g**

**Complete, natural and nutritious food, biologically adapted for the enjoyment of adult dogs.**

**Natura Diet**  
LIGHT

INSTRUCTIONS FOR USE

Serve the food using the recommended daily ration table as a guide. These amounts are approximate and should be subsequently adjusted to the animal's energy requirements. The daily portion should be readjusted if you provide your dog another type of food. Keep clean and fresh water at its disposal. Keep at room temperature in a dry place. Once opened, keep refrigerated and consume within 72 hours.

TABLE OF DAILY SERVINGS  
(1 or 2 FEEDS)

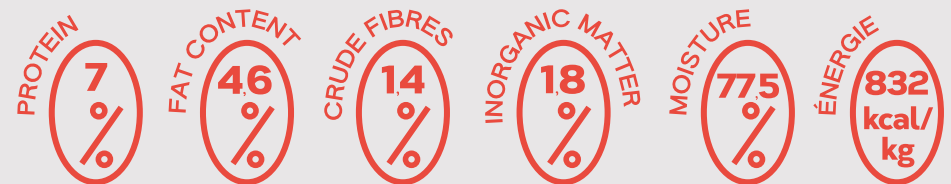
WEIGHT (KG)	DAILY SERVINGS (CAN)	MIX-FEEDING (can/g ND Light - 10%)
1-5	3/4	1/2 + 20g
6-10	1 + 1/2	1 + 40g
11-15	2	1 + 150g
>16	2 + 1/2	2 + 40g



COMPOSITION

**Fresh turkey (21%), white fish (15%), rice, vegetable fibres, dried carrots, leeks and broccoli (1%), linseed oil, dried marine krill, brewer's yeast, salmon oil, olive oil, salt. Prosafe complex: extracts of rosemary, turmeric, grapefruit and cloves.**

ANALYTICAL CONSTITUENTS



NUTRITIONAL ADDITIVES/KG

(3a672a) Vitamin A: 1000 UI  
(3a671) Vitamin D3: 100 UI  
(3a700i) Vitamin E: 20 UI  
(3b201) Iodide: 1 mg  
(3b405) Copper: 3 mg  
(3b503) Manganous: 1 mg  
(3b603) Zinc: 30 mg  
(3b801) Selenium: 0.1 mg

TECHNOLOGICAL ADDITIVES/KG

(1a330) Citric acid: 940 mg  
(E562) Sepiolite: 940 mg



# DingoNatura

MORE THAN PET FOOD

C/ Electrónica, 18  
Pol. Ind. La Ferrería  
08110, Montcada i Reixac  
Barcelona, Spain  
T +34 935 753 979  
info@dingonatura.com  
www.dingonatura.com



