



# CATALOGUE



# We are near and dear to animals

*bunny is a company that was founded out of love for animals.*

*Our objective was and still is to produce the ideal healthy food for small mammals, corresponding exactly to their original habitats and the needs of the animals.*

*The ingredients come from sustainably managed companies that treat the environment with respect, just as bunny does. Animal lovers, experts and vets join at bunny, with a high motivation to achieve the best for the animals.*

*Your bunnyNature team*

valid from 08/2023

# INDEX

## KNOWLEDGE

Our lucky formula	6
Trimello® technology	7
Nutritional requirements	8

## BASIC NUTRITION

RabbitDream	12
GuineaPigDream	16
Nature Shuttle	18
ChinchillaDream	20
DeguDream	21
HamsterDream	22
DwarfHamsterDream	25
GerbilDream	28
MouseDream	30
RatDream	32

## ALL NATURE

BOTANICALS	36
------------	----

## HAY

Hay from nature conservation meadows	48
My favortie Hay from nature conservation meadows	52
Timothy	54
FreshGrass Hay	56

## HEALTHFOOD & CARE

HealthFood	62
CareGel	69
SecureBunny	70

## SNACKS

Enjoy Nature	74
My little Sweetheart	78
CRUNCHY CRACKER	82



## INTERACTIVE

90 DiggingBox
91 DiggingFun
92 Snufflemat
93 Back to the ROOTS
94 COFFEEWOOD
95 COFFEEWOOD STICKS
96 Hay Active-Snack
98 Crispy Snack

## BEDDING & CAGECARE

102 Bedding
109 Care natural

## @HOME

110 bunnyNature by puppijames
112 Labyrinth
114 Campsite
115 Nap Time Bed
115 Snuffleboard

## ACCESSORIES

118 Fleecy
119 Bowls
119 miniMobil

## BOOKS

120 BOOKS
-----------





# KNOWLEDGE

The animals are always our top priority when we develop and produce species-appropriate food. Where do they come from? What do they eat there? What are their eating and social behaviours? Needless to say, simply knowing about this and their nutritional needs is not enough – putting this expertise into practice in the right products is ultimately crucial. That is what we do!



# OUR LUCKY FORMULA

The pursuit of happiness is something that all people share. And the pursuit of happiness for our pets also brings us together.

Happiness begins with the right balanced diet. It is the start of everything. Pets that are fed the right diet for their species are happy and healthy. Pets that are fed the right diet for their behaviour are happy and healthy. And animals that have no need to worry about their next meal are happy and healthy.

That takes us directly to our lucky formula. Our bunny recipes have always been based on the pet's very best interests. We know that dietary aspects make it necessary to provide pets with feed ad libitum, so that they can cover their needs every time without overeating or becoming overweight.

With our unique bunny recipes, we provide ideally-balanced feed, top quality ingredients and especially gentle processing... to cover the pet's weight-maintenance needs. Just as nature shows us. Needless to say, with no added preservatives, flavour enhancers, added sugar, colouring or flavouring.



Our formula for happiness means the best feed, unlimited feeding and relaxation for pet and owner.

It is so easy to give pets a healthy and species-appropriate diet. With the bunnyNature products, we offer pet owners the absolute certainty of the right diet... as well as the significant point of easy usage due to ad libitum feeding there is no chance of giving the wrong dose.

OUR LUCKY FORMULA VIDEO



# Trimello® TECHNOLOGY

The patented Trimello® shape gives us the opportunity to give the herbivores – dwarf rabbits, guinea pigs, chinchillas and degus – a diet that meets their dietary, physiological and behavioural needs.

The Trimello® allows us to process the plants it contains (42 different ones!) in different fibre lengths. On the one hand, the constantly-growing incisors and molars need the essential fibre structure for abrasion. On the other, the intestine needs a specific fibre length for the intestinal peristalsis. A very fine particle size is good for the caecum, which works as a fermentation chamber.

So why are there two different Trimello® shapes? For one thing, different animals have different chewing movements. While rabbits use a chewing movement like a figure of eight, guinea pigs, degus and chinchillas have a sliding joint that moves back and forth to grind down the food. The different shapes accommodate these differences.

The animals also have different eating behaviour. While rabbits take the food straight into their mouths, guinea pigs, chinchillas and degus behave very differently in the nature. They either take the food directly into their mouths, trap it with their front paws or pick it up and push it into their mouths with their paws. Here, the different shapes accommodate the natural behaviour 100%, too.

## Trimello® SHAPE IN TWO SIZES FOR DWARF RABBITS



- for young dwarf rabbits up to 6 months
- for older dwarf rabbits from 6 years
- for dwarf rabbits with dental problems



- for adult dwarf rabbits from 6 months

## Trimello® SHAPE FOR GUINEA PIGS, CHINCHILLAS AND DEGUS



- for guinea pigs, chinchillas & degus of all ages

# NUTRITIONAL REQUIREMENTS

The knowledge about animal needs and how to put it into practice consistently in animal food makes the difference. The digestive system is especially important for pets to enjoy a healthy and energetic life.



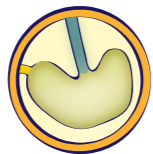
## FOLI-/HERBIVORE



### TEETH

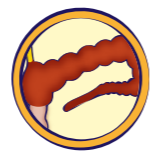
There are two incisors on the top and two on the bottom jaw. The two additional pivot teeth behind the upper incisors have no function. The incisors and molars have one thing in common: they never stop growing. That means:

- a) the teeth need to be in the right position to allow tooth abrasion, so that the teeth do not grow unchecked
- b) the choice of feed is a very important factor in the optimum abrasion of the incisors and molars; a coarse fibrous structure is needed



### STOMACH

The stomach needs to be kept full. It has only very weak muscles and is unable to push the food through into the intestine by itself. Help comes in the form of the next meal, which pushes the food through. That explains why dwarf rabbits, for example, eat an average of 80-120 small portions per day. These portions need to be tailored to the needs of adult animals or the growth of young dwarf rabbits.



### CAECUM

The caecum is the fermentation chamber. The fine raw fibre particles are brought here and converted into proteins, B vitamins and vitamin K by special bacteria. The caecum produces caecal droppings, which the animal then eats.



applies to  
DEGUS

### WITHOUT FRUIT

to prevent diabetes

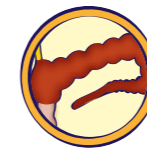


## GRANIVORE



### INCISORS

The incisors grow constantly and can be worn down correctly by biting and working on the right components (e.g. seeds).



### CAECUM

Granivore rodents have a small caecum, which can only process raw fibres to a limited extent. Its capacity is limited, which is why we have tailored our recipe to it.



### ANIMAL PROTEIN REQUIREMENTS

A very natural need, as this valuable protein is essential for the metabolism. However, the quantity needs to be adapted to the needs moderately.



### HIGH ENERGY NEEDS

Granivore rodents are real bundles of energy. Their high metabolic rate gives them increased energy needs. The real art is to know their exact needs and meet them by choosing the optimum raw materials.



applies to  
DWARF HAMSTERS

### WITHOUT FRUIT

to prevent diabetes



applies to  
GERBILS

### HIGH CONTENT OF MEALY SEEDS

They tend to increased blood fat levels and adiposity. Therefore we have decided to include a higher amount of mealy seeds. Thus the gerbil gets the ideal portion of energy.



# BASIC NUTRITION

To put it simply, we look at nature's menu and over your pet's shoulder. There is a huge amount of expertise and research and development work in our bunnyNature basic feed – and a lot of love, too. A love of animals, of course. For us, it is essential that pets receive the right diet for their species. That takes balanced recipes and the very best ingredients – no ifs, no buts. Consistently. Happy and healthy pets are our mission.



# RabbitDream

The natural habitat of dwarf rabbits are meadows and forest edges. As folivorous animals their diet consists of a wide variety of green plants. Nature supplements this selection with roots, vegetables and fruit. The dwarf rabbits natural habitat is exemplary for the development of bunnyNature species-appropriate products.

## YOUNG



Complete food for dwarf rabbits  
UNTIL THE AGE  
OF 6 MONTHS



- **BIODIVERS:** 42 different plants from natural meadows
- **Healthy growth:** Balanced calcium content
- **Optimum Trimello® size:** Easy intake for young dwarf rabbits



**Ingredients:**

Growth of permanent meadows (timothy, meadow fescue, meadow foxtail, german ryegrass, red fescue, blue grass, cocksfoot, velvet grass, annual panicle grass, white ragweed, vernal grass, couch grass, tussock grass, reed canary grass, white clover, red clover, dandelion leaves, yarrow herb, ribwort, caraway, cow parsley, meadow sweet, common hornwort, bedstraw, thyme-leaved speedwell, bush vetch, comfrey, bedstraw-meadow thistle, ground ivy, daisies, germander speedwell, lady's mantle, greater burnet-saxifrage, narrow-leaved vetch, meadow saxifrage, spring cinquefoil, green field-speedwell, common whitlow-grass, autumn dandelion, red ragweed, cowslip, small clover), oat peel bran, wheat bran, sunflower seed extracted, fruit pomace, carrot pomace, linseed extracted, lignocellulose, linseed, calcium carbonate, parsley leaves, yarrow herb, dandelion leaves

**Analytical constituents:**

Crude protein 14% - crude oils and crude fats 2.7% - crude fibre 20% - starch 5.7% - crude ash 8.5% - calcium 0.9% - phosphorous 0.5% - sodium 0.2%

**Additives per kg:**

Nutritional additives  
Vit. A 12.000 IU - Vit. D<sub>3</sub> 840 IU - Vit. E / all rac-alpha-tocopherylacetate 72 mg - copper as copper (II)-sulphate, pentahydrate 7.2 mg - iodine as calcium iodate, hexahydrate 1.08 mg - iron as iron (II)-sulphate, monohydrate 60 mg - zinc as zinc oxide 72 mg - manganese as manganese (II)-oxide 48 mg - selenite as sodium selenite 0.22 mg

Crude fibre to starch ratio: 3.5 : 1

750 g	Art. No.: 25003	Bar Code: 4018761250035
1.5 kg	Art. No.: 25005	Bar Code: 4018761250059
4 kg	Art. No.: 25007	Bar Code: 4018761250073
25 kg*	Art. No.: 25016	Bar Code: 4018761250165 *own needs

## BASIC



Complete food for dwarf rabbits  
FROM THE AGE  
OF 6 MONTHS



- **BIODIVERS:** 42 different plants from natural meadows
- **Optimum calcium content:** Healthy nourishment for teeth and bones



**Ingredients:**

Growth of permanent meadows (timothy, meadow fescue, meadow foxtail, german ryegrass, red fescue, blue grass, cocksfoot, velvet grass, annual panicle grass, white ragweed, vernal grass, couch grass, tussock grass, reed canary grass, white clover, red clover, dandelion leaves, yarrow herb, ribwort, caraway, cow parsley, meadow sweet, common hornwort, bedstraw, thyme-leaved speedwell, bush vetch, comfrey, bedstraw-meadow thistle, ground ivy, daisies, germander speedwell, lady's mantle, greater burnet-saxifrage, narrow-leaved vetch, meadow saxifrage, spring cinquefoil, green field-speedwell, common whitlow-grass, autumn dandelion, red ragweed, cowslip, small clover), oat peel bran, sunflower seed extracted, linseed extracted, fruit pomace, carrot pomace, wheat bran, rape seed extracted

**Analytical constituents:**

Crude protein 13% - crude oils and crude fats 2.7% - crude fibre 21% - starch 6% - crude ash 8.5% - calcium 0.6% - phosphorous 0.4% - sodium 0.18%

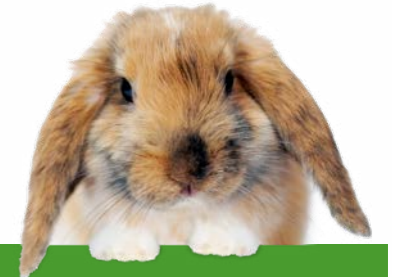
**Additives per kg:**

Nutritional additives  
Vit. A 10.000 IU - Vit. D<sub>3</sub> 700 IU - Vit. E / all rac-alpha-tocopherylacetate 60 mg - copper as copper (II)-sulphate, pentahydrate 6 mg - iodine as calcium iodate, hexahydrate 0.9 mg - iron as iron (II)-sulphate, monohydrate 50 mg - zinc as zinc oxide 60 mg - manganese as manganese (II)-oxide 40 mg - selenite as sodium selenite 0.18 mg

Crude fibre to starch ratio: 3.5 : 1

750 g	Art. No.: 25023	Bar Code: 4018761250233
1.5 kg	Art. No.: 25025	Bar Code: 4018761250257
4 kg	Art. No.: 25027	Bar Code: 4018761250271

## HERBS



Complete food for dwarf rabbits  
FROM THE AGE  
OF 6 MONTHS



- **BIODIVERS:** 42 different plants from natural meadows
- **Plus selected herbs:** Nettle, dandelion, ribwort, rosemary, thyme, sage, yarrow, comfrey & chervil
- **With blossoms from nature conservation meadows:** Daisies & camomile



**Ingredients:**

Growth of permanent meadows (timothy, meadow fescue, meadow foxtail, german ryegrass, red fescue, blue grass, cocksfoot, velvet grass, annual panicle grass, white ragweed, vernal grass, couch grass, tussock grass, reed canary grass, white clover, red clover, dandelion leaves, yarrow herb, ribwort, caraway, cow parsley, meadow sweet, common hornwort, bedstraw, thyme-leaved speedwell, bush vetch, comfrey, bedstraw-meadow thistle, ground ivy, daisies, germander speedwell, lady's mantle, greater burnet-saxifrage, narrow-leaved vetch, meadow saxifrage, spring cinquefoil, green field-speedwell, common whitlow-grass, autumn dandelion, red ragweed, cowslip, small clover), oat peel bran, sunflower seed extracted, linseed extracted, carrot pomace, fruit pomace, rape seed extracted, wheat bran, Stinging nettle leaves, ribwort, fennel seed, sweet liquorice root, marshmallow root, daisies, rosemary, aniseed, knotgrass, thyme, sage leaves, yarrow herb, camomile blossoms, calamus (herbs 6%, blossoms 1%)

**Analytical constituents:**

Crude protein 13% - crude oils and crude fats 2.7% - crude fibre 21% - starch 5.5% - crude ash 8.5% - calcium 0.6% - phosphorous 0.4% - sodium 0.18%

**Additives per kg:**

Nutritional additives  
Vit. A 10.000 IU - Vit. D<sub>3</sub> 700 IU - Vit. E / all rac-alpha-tocopherylacetate 60 mg - copper as copper (II)-sulphate, pentahydrate 6 mg - iodine as calcium iodate, hexahydrate 0.9 mg - iron as iron (II)-sulphate, monohydrate 50 mg - zinc as zinc oxide 60 mg - manganese as manganese (II)-oxide 40 mg - selenite as sodium selenite 0.18 mg

Crude fibre to starch ratio: 3.8 : 1

750 g	Art. No.: 25063	Bar Code: 4018761250639
1.5 kg	Art. No.: 25065	Bar Code: 4018761250653
4 kg	Art. No.: 25067	Bar Code: 4018761250677





## SENIOR

Complete food for dwarf rabbits  
FROM THE AGE  
OF 6 YEARS



- **BIODIVERS:** 42 different plants from natural meadows
- **Ginseng & ginkgo**
- **Indian frankincense**



**Ingredients:**

Growth of permanent meadows (timothy, meadow fescue, meadow foxtail, german ryegrass, red fescue, blue grass, cocksfoot, velvet grass, annual panicle grass, white ragweed, vernal grass, couch grass, tussock grass, reed canary grass, white clover, red clover, dandelion leaves, yarrow herb, ribwort, caraway, cow parsley, meadow sweet, common hornwort, bedstraw, thyme-leaved speedwell, bush vetch, comfrey, bedstraw-meadow thistle, ground ivy, daisies, germander speedwell, lady's mantle, greater burnet-saxifrage, narrow-leaved vetch, meadow saxifrage, spring cinquefoil, green field-speedwell, common whitlow-grass, autumn dandelion, red ragweed, cowslip, small clover), oat peel bran, sunflower seed extracted, carrot pomace, wheat bran, linseed extracted, wheat germ, rape seed extracted, brewer's grain, linseed, brewer's yeast, lignocellulose, milk thistle seeds, ginkgo leaves (0.1%), ginseng root (0.1%), rosemary, indian frankincense extract (0.03%)

**Analytical constituents:**

Crude protein 14% - crude oils and crude fats 3.3% - crude fibre 19.5% - starch 6% - crude ash 8.5% - calcium 0.7% - phosphorous 0.4% - sodium 0.18%

**Additives per kg:**

Nutritional additives  
Vit. A 11.500 IU - Vit. D, 800 IU - Vit. E / all rac-alpha-tocopheryllacetate 69 mg - copper as copper (II)-sulphate, pentahydrate 6.9 mg - iodine as calcium iodate, hexahydrate 1 mg - iron as iron (II)-sulphate, monohydrat 58 mg - zinc as zinc oxide 69 mg - manganese as manganese (II)-oxide 46 mg - selenite as sodium selenite 0.21 mg

Crude fibre to starch ratio: 3.3 : 1

1.5 kg Art. No.: 25105 Bar Code: 4018761251056  
4 kg Art. No.: 25107 Bar Code: 4018761251070



## ORAL

Complete food for dwarf rabbits  
WITH TOOTH PROBLEMS



- **BIODIVERS:** 42 different plants from natural meadows
- **Optimum Trimello® size:** Easy intake for dwarf rabbits with tooth problems
- **Soothes irritated gums:** Camomile, peppermint & sage



**Ingredients:**

Growth of permanent meadows (timothy, meadow fescue, meadow foxtail, german ryegrass, red fescue, blue grass, cocksfoot, velvet grass, annual panicle grass, white ragweed, vernal grass, couch grass, tussock grass, reed canary grass, white clover, red clover, dandelion leaves, yarrow herb, ribwort, caraway, cow parsley, meadow sweet, common hornwort, bedstraw, thyme-leaved speedwell, bush vetch, comfrey, bedstraw-meadow thistle, ground ivy, daisies, germander speedwell, lady's mantle, greater burnet-saxifrage, narrow-leaved vetch, meadow saxifrage, spring cinquefoil, green field-speedwell, common whitlow-grass, autumn dandelion, red ragweed, cowslip, small clover), oat peel bran, sunflower seed extracted, wheat bran, carrot pomace, linseed extracted, fruit pomace, rape seed extracted, linseed, lignocellulose, camomile blossoms (0.7%), peppermint leaves (0.3%), sage leaves (0.1%)

**Analytical constituents:**

Crude protein 13% - crude oils and crude fats 2.8% - crude fibre 21% - starch 6.4% - crude ash 8.5% - calcium 0.6% - phosphorous 0.4% - sodium 0.18%

**Additives per kg:**

Nutritional additives  
Vit. A 10.000 IU - Vit. D, 700 IU - Vit. E / all rac-alpha-tocopheryllacetate 60 mg - copper as copper (II)-sulphate, pentahydrate 6 mg - iodine as calcium iodate, hexahydrate 0.9 mg - iron as iron (II)-sulphate, monohydrat 50 mg - zinc as zinc oxide 60 mg - manganese as manganese (II)-oxide 40 mg - selenite as sodium selenite 0.18 mg

Crude fibre to starch ratio: 3.3 : 1

750 g Art. No.: 25123 Bar Code: 4018761251230  
1.5 kg Art. No.: 25125 Bar Code: 4018761251254  
4 kg Art. No.: 25127 Bar Code: 4018761251278



## WINTER OUTDOOR

Complete food for dwarf rabbits  
KEPT OUTDOORS IN WINTER



- **Strengthens the immune system:** A plus in vitamins & proteins
- **Supports airways:** Aniseed, ribwort & camomile blossoms
- **Thick fur:** Linseed & zinc



**Ingredients:**

Growth of permanent meadows (timothy, meadow fescue, meadow foxtail, german ryegrass, red fescue, blue grass, cocksfoot, velvet grass, annual panicle grass, white ragweed, vernal grass, couch grass, tussock grass, reed canary grass, white clover, red clover, dandelion leaves, yarrow herb, ribwort, caraway, cow parsley, meadow sweet, common hornwort, bedstraw, thyme-leaved speedwell, bush vetch, comfrey, bedstraw-meadow thistle, ground ivy, daisies, germander speedwell, lady's mantle, greater burnet-saxifrage, narrow-leaved vetch, meadow saxifrage, spring cinquefoil, green field-speedwell, common whitlow-grass, autumn dandelion, red ragweed, cowslip, small clover), oat peel bran, sunflower seed extracted, carrot pomace, wheat bran, linseed extracted, rape seed extracted, brewer's grain, wheat germ, linseed (1.5%), buckwheat, brewer's yeast, lignocellulose, inulin, grape seed meal, camomile blossoms (0.3%), ribwort (0.3%), aniseed (0.2%)

**Analytical constituents:**

Crude protein 14.5% - crude oils and crude fats 3.2% - crude fibre 19% - starch 6% - crude ash 8.5% - calcium 0.7% - phosphorous 0.4% - sodium 0.18%

**Additives per kg:**

Nutritional additives  
Vit. A 11.000 IU - Vit. D, 770 IU - Vit. E / all rac-alpha-tocopheryllacetate 66 mg - copper as copper (II)-sulphate, pentahydrate 6.6 mg - iodine as calcium iodate, hexahydrate 1 mg - iron as iron (II)-sulphate, monohydrat 55 mg - zinc as zinc oxide 66 mg - manganese as manganese (II)-oxide 44 mg - selenite as sodium selenite 0.2 mg

Crude fibre to starch ratio: 3.2 : 1

1.5 kg Art. No.: 25115 Bar Code: 4018761251155  
4 kg Art. No.: 25117 Bar Code: 4018761251179



## SPECIAL EDITION

Complete food for dwarf rabbits  
FROM THE AGE  
OF 6 MONTHS



- **With an extra portion:** Vegetables rich in vitamins
- **With pumpkin:** Rich in vital materials
- **BIODIVERS:** 42 different plants from natural meadows
- **Optimum calcium content:** Healthy nourishment for teeth and bones



**Ingredients:**

Growth of permanent meadows (timothy, meadow fescue, meadow foxtail, german ryegrass, red fescue, blue grass, cocksfoot, velvet grass, annual panicle grass, white ragweed, vernal grass, couch grass, tussock grass, reed canary grass, white clover, red clover, dandelion leaves, yarrow herb, ribwort, caraway, cow parsley, meadow sweet, common hornwort, bedstraw, thyme-leaved speedwell, bush vetch, comfrey, bedstraw-meadow thistle, ground ivy, daisies, germander speedwell, lady's mantle, greater burnet-saxifrage, narrow-leaved vetch, meadow saxifrage, spring cinquefoil, green field-speedwell, common whitlow-grass, autumn dandelion, red ragweed, cowslip, small clover), oat peel bran, sunflower seed extracted, fruit pomace, linseed extracted, carrot pomace, wheat bran, chicory root (2%), parsnips (2%), rape seed extracted, pumpkin flakes (1%), sweet pepper (1%), parsley stems, brewer's grain, carob flour, marigold blossoms, brewer's yeast, calcium carbonate, camomile blossoms, chicory powder (vegetables 6%)

**Analytical constituents:**

Crude protein 12.8% - crude oils and crude fats 2.4% - crude fibre 19.5% - starch 5.5% - crude ash 8.0% - calcium 0.7% - phosphorous 0.4%

**Additives per kg:**

Nutritional additives  
Vit. A 9400 IU - Vit. D, 658 IU - Vit. E / all rac-alpha-tocopheryllacetate 56 mg - copper as copper (II)-sulphate, pentahydrate 5.6 mg - iodine as calcium iodate, hexahydrate 0.85 mg - iron as iron (II)-sulphate, monohydrat 47 mg - zinc as zinc oxide 56.4 mg - manganese as manganese (II)-oxide 37.6 mg - selenite as sodium selenite 0.17 mg

Crude fibre to starch ratio: 3.5 : 1

1.5 kg Art. No.: 25085 Bar Code: 4018761250851  
4 kg Art. No.: 25087 Bar Code: 4018761250875



# Guinea Pig Dream

Guinea pigs originally come from South America. In the nature, they live on a wide variety of plants. Like dwarf rabbits, chinchillas and degus, they are specialists in eating green plants.

We have looked closely at what guinea pigs in the nature in South America eat and incorporated our findings into the basic feed. Along with the many valuable raw materials, the South American plants make GuineaPigDream the ideal basic feed.



## YOUNG

Complete food for guinea pigs UNTIL THE AGE OF 5 MONTHS



- **BIODIVERS:** 42 different plants from natural meadows
- **High portion of stabilised vitamin C:** Stabilised vitamin C - to cover needs fully and continuously
- **Healthy growth:** Balanced calcium content



**Ingredients:**

Growth of permanent meadows (timothy, meadow fescue, meadow foxtail, german ryegrass, red fescue, blue grass, cocksfoot, velvet grass, annual panicle grass, white ragweed, vernal grass, couch grass, tussock grass, reed canary grass, white clover, red clover, dandelion leaves, yarrow herb, ribwort, caraway, cow parsley, meadow sweet, common hornwort, bedstraw, thyme-leaved speedwell, bush vetch, comfrey, bedstraw-meadow thistle, ground ivy, daisies, germander speedwell, lady's mantle, greater burnet-saxifrage, narrow-leaved vetch, meadow saxifrage, spring cinquefoil, green field-speedwell, common whitlow-grass, autumn dandelion, red ragweed, cowslip, small clover), oat peel bran, sunflower seed extracted, carrot pomace, whole plant corn, linseed extracted, rape seed extracted, carrots, brewer's grain, lignocellulose, sweet pepper, linseed, sunchoke herb, brewer's yeast, quinoa, amaranth, chokeberry pomace, parsley leaves, dicalcium phosphate, yarrow herb, dandelion leaves, calcium carbonate, maca root

**Analytical constituents:**

Crude protein 14% - crude oils and crude fats 2.8% - crude fibre 20% - starch 6.1% - crude ash 8.5% - calcium 0.9% - phosphorous 0.45%

**Additives per kg:**

Nutritional additives  
 Vit. A 12.000 IU - Vit. D<sub>3</sub> 840 IU - Vit. E / all rac-alpha-tocopherylacetate 72 mg - Vit. C as ascorbylmonophosphate, calcium-sodium-salt 600 mg - copper as copper (II)-sulphate, pentahydrate 7.2 mg - iodine as calcium iodate, hexahydrate 1.08 mg - iron as iron (II)-sulphate, monohydrate 60 mg - zinc as zinc oxide 72 mg - manganese as manganese (II)-oxide 48 mg - selenite as sodium selenite 0.22 mg

Crude fibre to starch ratio: 3.3 : 1

750 g	Art. No.: 25303	Bar Code: 4018761253036
1.5 kg	Art. No.: 25305	Bar Code: 4018761253050
4 kg	Art. No.: 25307	Bar Code: 4018761253074
25 kg*	Art. No.: 25316	Bar Code: 4018761253166

\*own needs



## BASIC

Complete food for guinea pigs FROM THE AGE OF 5 MONTHS



- **BIODIVERS:** 42 different plants from natural meadows
- **High portion of stabilised vitamin C:** Stabilised vitamin C - to cover needs fully and continuously



**Ingredients:**

Growth of permanent meadows (timothy, meadow fescue, meadow foxtail, german ryegrass, red fescue, blue grass, cocksfoot, velvet grass, annual panicle grass, white ragweed, vernal grass, couch grass, tussock grass, reed canary grass, white clover, red clover, dandelion leaves, yarrow herb, ribwort, caraway, cow parsley, meadow sweet, common hornwort, bedstraw, thyme-leaved speedwell, bush vetch, comfrey, bedstraw-meadow thistle, ground ivy, daisies, germander speedwell, lady's mantle, greater burnet-saxifrage, narrow-leaved vetch, meadow saxifrage, spring cinquefoil, green field-speedwell, common whitlow-grass, autumn dandelion, red ragweed, cowslip, small clover), timothy, oat peel bran, sunflower seed extracted, whole plant corn, carrot pomace, linseed extracted, rape seed extracted, carrots, brewer's grain, lignocellulose, sweet pepper, linseed, brewer's yeast, quinoa, amaranth, chokeberry pomace, maca root

**Analytical constituents:**

Crude protein 13% - crude oils and crude fats 2.5% - crude fibre 21% - starch 6% - crude ash 8.5% - calcium 0.6% - phosphorous 0.4%

**Additives per kg:** Nutritional additives

Vit. A 10.000 IU - Vit. D<sub>3</sub> 700 IU - Vit. E / all rac-alpha-tocopherylacetate 60 mg - Vit. C as ascorbylmonophosphate, calcium-sodium-salt 600 mg - copper as copper (II)-sulphate, pentahydrate 6 mg - iodine as calcium iodate, hexahydrate 0.9 mg - iron as iron (II)-sulphate, monohydrate 50 mg - zinc as zinc oxide 60 mg - manganese as manganese (II)-oxide 40 mg - selenite as sodium selenite 0.18 mg

Crude fibre to starch ratio: 3.5 : 1

750 g	Art. No.: 25323	Bar Code: 4018761253234
1.5 kg	Art. No.: 25325	Bar Code: 4018761253258
4 kg	Art. No.: 25327	Bar Code: 4018761253272



## SENIOR

Complete food for guinea pigs FROM THE AGE OF 5 YEARS



- **Ginseng & ginkgo**
- **Indian frankincense**
- **High portion of stabilised vitamin C:** Stabilised vitamin C - to cover needs fully and continuously



**Ingredients:**

Growth of permanent meadows (timothy, meadow fescue, meadow foxtail, german ryegrass, red fescue, blue grass, cocksfoot, velvet grass, annual panicle grass, white ragweed, vernal grass, couch grass, tussock grass, reed canary grass, white clover, red clover, dandelion leaves, yarrow herb, ribwort, caraway, cow parsley, meadow sweet, common hornwort, bedstraw, thyme-leaved speedwell, bush vetch, comfrey, bedstraw-meadow thistle, ground ivy, daisies, germander speedwell, lady's mantle, greater burnet-saxifrage, narrow-leaved vetch, meadow saxifrage, spring cinquefoil, green field-speedwell, common whitlow-grass, autumn dandelion, red ragweed, cowslip, small clover), oat peel bran, sunflower seed extracted, whole plant corn, carrot pomace, linseed extracted, rape seed extracted, wheat germ, carrots, brewer's grain, lignocellulose, sweet pepper, linseed, brewer's yeast, milk thistle seeds, quinoa, amaranth, chokeberry pomace, ginkgo leaves (0.1%), ginseng root (0.1%), rosemary, maca root, indian frankincense extract (0.03%)

**Analytical constituents:**

Crude protein 14% - crude oils and crude fats 3.3% - crude fibre 19.5% - starch 6.3% - crude ash 8.5% - calcium 0.7% - phosphorous 0.4%

**Additives per kg:** Nutritional additives

Vit. A 11.500 IU - Vit. D<sub>3</sub> 800 IU - Vit. E / all rac-alpha-tocopherylacetate 69 mg - Vit. C as ascorbylmonophosphate, calcium-sodium-salt 680 mg - copper as copper (II)-sulphate, pentahydrate 6.9 mg - iodine as calcium iodate, hexahydrate 1 mg - iron as iron (II)-sulphate, monohydrate 58 mg - zinc as zinc oxide 69 mg - manganese as manganese (II)-oxide 46 mg - selenite as sodium selenite 0.21 mg

Crude fibre to starch ratio: 3.1 : 1

750 g	Art. No.: 25403	Bar Code: 4018761254033
1.5 kg	Art. No.: 25405	Bar Code: 4018761254057
4 kg	Art. No.: 25407	Bar Code: 4018761254071



# Nature Shuttle

Unknowingly many animals are hardly fed species-appropriate. Often far too sugary. bunny Nature Shuttle helps the animals to return to a naturally-healthy and species-appropriate nutrition.

## On the way to happiness...

Unfortunately the dishes of animals, that are not fed much species-appropriate food, are mainly being filled with „Fast Food“: Too many calories & too much sugar content. This food hardly contains any components that correspond to the animals' nutritional needs.

In plain language this means: The food was not nutritionally appropriate. On the contrary.

It is not always easy for animals to switch immediately from calorie-rich food to a species-appropriate diet. They have gotten used to the sugar and need to be weaned off of it.

Nature Shuttle helps rabbits and guinea pigs through this small intermediate feeding step. It is very easy: Feed Nature Shuttle (600 g) and then switch to a Dream product. Because of the adapted composition of Nature Shuttle, this intermediate step makes the switch to optimum nutrition easier for animals.



## SHUTTLE

Complete food for dwarf rabbits  
FROM THE AGE  
OF 6 MONTHS



- Enter: Into the world of healthy feeding
- Change: To bunny Trimellos®
- Be happy



**Ingredients:**  
Growth of permanent meadows (timothy, meadow fescue, meadow foxtail, german ryegrass, red fescue, blue grass, cocksfoot, velvet grass, annual panicle grass, white ragweed, vernal grass, couch grass, tussock grass, reed canary grass, white clover, red clover, dandelion leaves, yarrow herb, ribwort, caraway, cow parsley, meadow sweet, common hornwort, bedstraw, thyme-leaved speedwell, bush vetch, comfrey, bedstraw-meadow thistle, ground ivy, daisies, germander speedwell, lady's mantle, greater burnet-saxifrage, narrow-leaved vetch, meadow saxifrage, spring cinquefoil, green field-speedwell, common whitlow-grass, autumn dandelion, red ragweed, cowslip, small clover), barley, wheat bran, oat peel bran, sunflower seed extracted, carrot pomace, linseed extracted, carrots, parsnips, lignocellulose, chicory root, peppermint leaves, currant leaves, marigold blossoms, calcium carbonate, brewer's grain, carob, brewer's yeast, camomile blossoms, inulin

**Analytical constituents:**  
Crude protein 12.7 % - crude oils and crude fats 2.1 % - crude fibre 18 % - crude ash 8.5 % - calcium 0.6 % - phosphorous 0.4 % - sodium 0.18 %

**Additives per kg:** Nutritional additives  
Vit. A 10.000 IU - Vit. D<sub>3</sub> 700 IU - Vit. E / all rac-alpha-tocopherylacetate 60 mg - copper as copper (II)-sulphate, pentahydrate 6 mg - iodine as calcium iodate, hexahydrate 0,9 mg - iron as iron (II)-sulphate, monohydrat 50 mg - zinc as zinc oxide 60 mg - manganese as manganese (II)-oxide 40 mg - selenite as sodium selenite 0,18 mg

600 g Art. No.: 25133

Bar Code: 4018761251339



## SHUTTLE

Complete food for guinea pigs  
FROM THE AGE  
OF 5 MONTHS



- Enter: Into the world of healthy feeding
- Change: To bunny Trimellos®
- Be happy



**Ingredients:**  
Growth of permanent meadows (timothy, meadow fescue, meadow foxtail, german ryegrass, red fescue, blue grass, cocksfoot, velvet grass, annual panicle grass, white ragweed, vernal grass, couch grass, tussock grass, reed canary grass, white clover, red clover, dandelion leaves, yarrow herb, ribwort, caraway, cow parsley, meadow sweet, common hornwort, bedstraw, thyme-leaved speedwell, bush vetch, comfrey, bedstraw-meadow thistle, ground ivy, daisies, germander speedwell, lady's mantle, greater burnet-saxifrage, narrow-leaved vetch, meadow saxifrage, spring cinquefoil, green field-speedwell, common whitlow-grass, autumn dandelion, red ragweed, cowslip, small clover), barley, wheat bran, oat peel bran, sunflower seed extracted, carrot pomace, linseed extracted, lignocellulose, sweet pepper, carrots, parsnips, chicory root, birch leaves, parsley stems, sunchoke herb, marigold blossoms, calcium carbonate, brewer's grain, carob, brewer's yeast, camomile blossoms, inulin

**Analytical constituents:**  
Crude protein 13.1 % - crude oils and crude fats 2.1 % - crude fibre 18 % - crude ash 8.5 % - calcium 0.7 % - phosphorous 0.4 %

**Additives per kg:** Nutritional additives  
Vit. A 10.000 IU - Vit. D<sub>3</sub> 700 IU - Vit. E / all rac-alpha-tocopherylacetate 60 mg - Vit. C as ascorbylmonophosphate, calcium-sodium-salt 600 mg - copper as copper (II)-sulphate, pentahydrate 6 mg - iodine as calcium iodate, hexahydrate 0,9 mg - iron as iron (II)-sulphate, monohydrat 50 mg - zinc as zinc oxide 60 mg - manganese as manganese (II)-oxide 40 mg - selenite as sodium selenite 0,18 mg

600 g Art. No.: 25433

Bar Code: 4018761254330

# ChinchillaDream



## BASIC

Complete food for CHINCHILLAS

Chinchillas live in their natural habitat - the highlands of South America - on plant diets. They are capable of optimally using the available plants. The natural habitat and the natural gnawing needs were the basis for the new composition of bunny ChinchillaDream BASIC.



- **BIODIVERS:** 42 different plants from natural meadows
- **Plus apple wood:** Dental care & employment
- **Vegetables & blossoms:** Active vital ingredients



**Ingredients:**

Growth of permanent meadows (timothy, meadow fescue, meadow foxtail, german ryegrass, red fescue, blue grass, cocksfoot, velvet grass, annual panicle grass, white ragweed, vernal grass, couch grass, tussock grass, reed canary grass, white clover, red clover, dandelion leaves, yarrow herb, ribwort, caraway, cow parsley, meadow sweet, common hornwort, bedstraw, thyme-leaved speedwell, bush vetch, comfrey, bedstraw-meadow thistle, ground ivy, daisies, germander speedwell, lady's mantle, greater burnet-saxifrage, narrow-leaved vetch, meadow saxifrage, spring cinquefoil, green field-speedwell, common whitlow-grass, autumn dandelion, red ragweed, cowslip, small clover), whole plant corn, timothy, sunflower seed extracted, apple wood (5%), linseed extracted, whole lupin plant, oat peel bran, wheat bran, rape seed extracted, brewer's grain, lignocellulose, brewer's yeast, wheat germ, linseed, currant leaves, parsnips, chicory root, rose blossoms, marigold blossoms, sunchoke herb, amaranth, ribwort, dandelion leaves, peppermint leaves, fennel seed, camomile blossoms, milk thistle herb, maca root, sage leaves (vegetables 2%, blossoms 2%)

**Analytical constituents:**

Crude protein 13.7% - crude oils and crude fats 2.7% - crude fibre 20.5% - starch 6.4% - crude ash 8.5% - calcium 0.65% - phosphorous 0.4%

**Additives per kg:** Nutritional additives

Vit. A 10.800 IU - Vit. D<sub>3</sub> 750 IU - Vit. E / all rac-alpha-tocopherylacetate 65 mg - copper as copper (II)-sulphate, pentahydrate 6.5 mg - iodine as calcium iodate, hexahydrate 1 mg - iron as iron (II)-sulphate, monohydrate 54 mg - zinc as zinc oxide 65 mg - manganese as manganese (II)-oxide 43 mg - selenite as sodium selenite 0.19 mg

Crude fibre to starch ratio: 3.2 : 1

600 g	Art. No.: 25663	Bar Code: 4018761256631
1.2 kg	Art. No.: 25666	Bar Code: 4018761256662
3.2 kg	Art. No.: 25670	Bar Code: 4018761256709
3.2 kg*	Art. No.: 25671	Bar Code: 4018761256716 *own needs



# DeguDream



## BASIC

Complete food for DEGUS

72 components really are a dream. Especially for the degus. This balanced formula is the optimum food for the South American rodent. Naturally made with elements from their native habitat and without added fruit, to prevent diabetes.



- **BIODIVERS:** 42 different plants from natural meadows
- **Vegetables & blossoms:** Active vital ingredients
- **Without fruit:** To prevent diabetes



**Ingredients:**

Growth of permanent meadows (timothy, meadow fescue, meadow foxtail, german ryegrass, red fescue, blue grass, cocksfoot, velvet grass, annual panicle grass, white ragweed, vernal grass, couch grass, tussock grass, reed canary grass, white clover, red clover, dandelion leaves, yarrow herb, ribwort, caraway, cow parsley, meadow sweet, common hornwort, bedstraw, thyme-leaved speedwell, bush vetch, comfrey, bedstraw-meadow thistle, ground ivy, daisies, germander speedwell, lady's mantle, greater burnet-saxifrage, narrow-leaved vetch, meadow saxifrage, spring cinquefoil, green field-speedwell, common whitlow-grass, autumn dandelion, red ragweed, cowslip, small clover), whole plant corn, timothy, sunflower seed extracted, linseed extracted, whole lupin plant, oat peel bran, wheat bran, rape seed extracted, sunchoke stem, brewer's grain, lignocellulose, parsnips, brewer's yeast, wheat germ, linseed, marigold blossoms, sweet pepper, tomato, parsley stems, sunchoke herb, hibiscus blossoms, malva blossoms, currant leaves, amaranth, ribwort, dandelion leaves, peppermint leaves, fennel seed, milk thistle herb, camomile blossoms, maca root, sage leaves (vegetables 5%, blossoms 2%)

**Analytical constituents:**

Crude protein 14.3% - crude oils and crude fats 2.8% - crude fibre 20% - starch 6.6% - crude ash 8.5% - calcium 0.65% - phosphorous 0.4%

**Additives per kg:** Nutritional additives

Vit. A 10.800 IU - Vit. D<sub>3</sub> 750 IU - Vit. E / all rac-alpha-tocopherylacetate 65 mg - copper as copper (II)-sulphate, pentahydrate 6.5 mg - iodine as calcium iodate, hexahydrate 1 mg - iron as iron (II)-sulphate, monohydrate 54 mg - zinc as zinc oxide 65 mg - manganese as manganese (II)-oxide 43 mg - selenite as sodium selenite 0.19 mg

Crude fibre to starch ratio: 3 : 1

1.2 kg	Art. No.: 25725	Bar Code: 4018761257256
3.2 kg	Art. No.: 25730	Bar Code: 4018761257300
3.2 kg*	Art. No.: 25731	Bar Code: 4018761257317 *own needs



# Hamster Dream

We know hamsters well. That's why the composition is so diverse and balanced. Not only are the nutritional needs considered but also the necessary component diversity for the feeding and transportation behaviour of hamsters.



## BASIC

Complete food for HAMSTERS



- **Mealworms:** High-quality supply with animal protein
- **Grain & seeds:** Valuable protein, unsaturated fatty acids & essential amino acids
- **Ideal particle size:** Ideal for hoarding



**Ingredients:**

Oats, barley, plata millet, corn, canary seed, barley flakes, pea flakes, wheat, wheat bran, corn flakes, sunflower seed extracted, carrots, oat flakes, rice, silver millet, chicken, lucerne, grass seed, red millet, linseed, parsnips, calcium carbonate, brewer's grain, carrot pomace, beetroot, brewer's yeast, animal fat, dandelion herb, yarrow herb, sesame, herring meal, inulin, sweet pepper, apples, meal worms (0.3%), camomile blossoms, rosehip peel, carob, chicken liver extract, dried whole egg, malva blossoms, salmon oil, linseed oil, lecithin (grain 54%, seeds 21%)

**Analytical constituents:**

Crude protein 15% · crude oils and crude fats 6% · crude fibre 7.6% · crude ash 5.5% · calcium 0.5% · phosphorous 0.4%

**Additives per kg:**

Nutritional additives  
 Vit. A 6.500 IU · Vit. D<sub>3</sub> 510 IU · Vit. E / all rac-alpha-tocopherylacetate 63 mg · copper as copper (II)-sulphate, pentahydrate 3.5 mg · iodine as calcium iodate, hexahydrate 0.5 mg · iron as iron (II)-sulphate, monohydrat 34 mg · zinc as zinc oxide 43 mg · manganese as manganese (II)-oxide 23 mg · selenite as sodium selenite 0.1 mg with antioxidant alpha-tocopherol

400 g Art. No.: 25823 Bar Code: 4018761258239  
 600 g Art. No.: 25821 Bar Code: 4018761258215  
 4 kg\* Art. No.: 25828 Bar Code: 4018761258284 \*own needs



## EXPERT

Complete food for hamsters  
**NO EXTRUDATE**  
**NO PELLETS**



- **VitalPlus granivor:** special vitamin-mineral complex
- **Power ingredients and small seeds:** balanced & perfect size
- **Sesame & grass seed:** rich in vitamins and nutrients
- **Ingredients from the habitat of hamsters:** original, need-oriented and valuable

**Ingredients:**

Plata millet, canary seed, pea flakes, mung beans, barley, oats, quinoa seeds, corn, barley flakes, oatkernel, carrots, sesame (3%), silver millet, linseed, red millet, grass seed (1.7%), parsnips, mealworms (1%), calcium carbonate, beetroot, yarrow, dandelion leaves, lucerne, sweet pepper, apples, rosehip, malva blossoms, semolina bran (seeds / small seeds 43.5%)

**Analytical constituents:**

Crude protein 15% · crude oils and crude fats 6.5% · crude fibre 6% · crude ash 5.5% · calcium 0.5% · phosphorous 0.4%

**Additives per kg:**

Nutritional additives  
 Vit. A 6.500 IU · Vit. D<sub>3</sub> 520 IU · Vit. E / all rac-alpha-tocopherylacetate 58.5 mg · copper as copper (II)-sulphate, pentahydrate 3.4 mg · iodine as calcium iodate, hexahydrate 0.5 mg · iron as iron (II)-sulphate, monohydrat 32.5 mg · zinc as zinc oxide 42.3 mg · manganese as manganese (II)-oxide 22.8 mg · selenite as sodium selenite 0.1 mg

500 g Art. No.: 25822 Bar Code: 4018761258222  
 3,2 kg\* Art. No.: 25829 Bar Code: 4018761258291 \*own needs

Some hamsters love nothing more than eating their pellets and extrudates, while others leave them untouched in their bowl. Picking out parts of a feed mix like this leaves the pets short of key nutrients such as vitamins and trace elements.

VitalPlus-granivor, a special mix of vitamins and trace elements, eliminates the need for pellets and extrudates in the EXPERT products.





**EXPERT HAIR & SKIN**

Complete food for hamsters  
NO EXTRUDATE  
NO PELLETS



- **Supports hair & skin:** shine, strengthening, structure & cell renewal
- **Essential amino acids:** from sweet lupine & mung beans
- **Unsaturated fatty acids:** from linseed and milk thistle seeds
- **Siliceous millet**

**Ingredients:**  
Plata millet, pea flakes, mung beans (8.5%), quinoa seeds, barley flakes, barley, oatkernel, white millet, carrots, corn, oats, sweet lupin flakes (3%), linseed (3%), red millet, sesame, grass seed, parsnips, mealworms (1%), milk thistle seeds (1%), beetroot, calcium carbonate, lucerne, yarrow, dandelion leaves, sweet pepper, rosehip peel, malva blossoms, semolina bran (millet 27.3%)

**Analytical constituents:**  
Crude protein 15% - crude oils and crude fats 6.5% - crude fibre 7% - crude ash 5.5% - calcium 0.5% - phosphorous 0.4%

**Additives per kg:**  
Nutritional additives  
Vitamin A 6.500 IU - Vitamin D<sub>3</sub> 520 IU - Vitamin E / all rac-alpha-tocopherylacetate 58.25 mg - copper as copper (II)-sulphate, pentahydrate 3.4 mg - iodine as calcium iodate, water-free 0.5 mg - iron as iron (II)-sulphate, monohydrat 32.5 mg - zinc as zinc oxide 42.3 mg - manganese as manganese (II)-oxide 22.8 mg - selenite as sodium selenite 0.1 mg

500 g Art. No.: 20824 Bar Code: 4018761208241



**EXPERT VEGETABLE**

Complete food for hamsters  
NO EXTRUDATE  
NO PELLETS



- **Pumpkin, zucchini & sweet pepper:** valuable vitamins & nutrients
- **VitalPlus granivor:** special vitamin-mineral complex
- **Super-Food:** quinoa & mung beans
- **Mealworms:** optimal level of animal protein

**Ingredients:**  
Plata millet, pea flakes, mung beans (8.4%), quinoa seeds (8%), barley flakes, oatkernel, barley, white millet, oats, carrots, corn, linseed, sweet lupin flakes, red millet, sesame, grass seed, parsnips, mealworms (1.2%), pumpkin flakes (0.8%), zucchini (0.8%), beetroot (0.7%), calcium carbonate, lucerne, yarrow, dandelion leaves, sweet pepper (0.5%), rosehip peel, malva blossoms, semolina bran (vegetables 6.4%)

**Analytical constituents:**  
Crude protein 15% - crude oils and crude fats 6.5% - crude fibre 7% - crude ash 5.5% - calcium 0.5% - phosphorous 0.4%

**Additives per kg:**  
Nutritional additives  
Vitamin A 6.500 IU - Vitamin D<sub>3</sub> 520 IU - Vitamin E / all rac-alpha-tocopherylacetate 58.2 mg - copper as copper (II)-sulphate, pentahydrate 3.4 mg - iodine as calcium iodate, water-free 0.5 mg - iron as iron (II)-sulphate, monohydrat 32.5 mg - zinc as zinc oxide 42.3 mg - manganese as manganese (II)-oxide 22.8 mg - selenite as sodium selenite 0.1 mg

500 g Art. No.: 20825 Bar Code: 4018761208258



**BASIC DWARF HAMSTERS**

Complete food for DWARF HAMSTERS



- **Mealworms:** High-quality supply with animal protein
- **Ideal particle size:** Ideal for hoarding
- **Without fruit:** To prevent diabetes



**Ingredients:**  
Oats, barley, plata millet, canary seed, pea flakes, corn, wheat bran, oat flakes, barley flakes, sunflower seed extracted, silver millet, rice, wheat, lucerne, carrots, chicken, red millet, grass seed, parsnips, dandelion herb, calcium carbonate, yarrow herb, ribwort, brewer's grain, sesame, camomile blossoms, linseed, carrot pomace, beetroot, brewer's yeast, herring meal, animal fat, inulin, marigold blossoms, meal worms (0.3%), chicken liver extract, dried whole egg, carob, salmon oil, linseed oil, lecithin, rose blossoms

**Analytical constituents:**  
Crude protein 15.5% - crude oils and crude fats 6.3% - crude fibre 8% - crude ash 5.5% - calcium 0.5% - phosphorous 0.4%

**Additives per kg:**  
Nutritional additives  
Vit. A 6.500 IU - Vit. D<sub>3</sub> 500 IU - Vit. E / all rac-alpha-tocopherylacetate 66 mg - copper as copper (II)-sulphate, pentahydrate 3.5 mg - iodine as calcium iodate, hexahydrate 0.54 mg - iron as iron (II)-sulphate, monohydrat 34 mg - zinc as zinc oxide 44 mg - manganese as manganese (II)-oxide 24 mg - selenite as sodium selenite 0.1 mg with antioxidant alpha-tocopherol

400 g Art. No.: 25923 Bar Code: 4018761259236  
600 g Art. No.: 25921 Bar Code: 4018761259212  
4 kg\* Art. No.: 25928 Bar Code: 4018761259281 \*own needs

# Dwarf Hamster Dream

Dwarf hamsters love occupying themselves extensively with their food. For this reason our new balanced formula with all its diverse components is so valuable to our little loveable speedsters. The most important aspect is that no fruit is added in order to prevent diabetes.



Just like humans, not every pet likes the same foods. Some dwarf hamsters absolutely refuse to eat pellets and extrudates, for example.

We have now succeeded in developing our BASIC product pellet and extrudate refuseniks. Our special mix of vitamins and trace elements makes it possible to do without vitamin pellets, for example, altogether.

Additional power ingredients provide additional proteins and minerals.



**EXPERT**

Complete food for dwarf hamsters  
NO EXTRUDATE  
NO PELLETS



- **VitalPlus granivor:** special vitamin-mineral complex
- **Power ingredients and small seeds:** balanced & perfect size
- **Without fruit:** to prevent diabetes
- **Ingredients from the habitat of dwarf hamsters:** original, need-oriented and valuable

**Ingredients:**  
Plata millet, canary seed, pea flakes, quinoa seeds, barley, mung beans, amaranth puffed, barley flakes, oatkernel, silver millet, perilla seeds, red millet, carrots, linseed (2%), grass seed, parsnips, dandelion leaves, lucerne, mealworms (1%), yarrow, ribwort, sesame (1%), calcium carbonate, beetroot, marigold blossoms, camomile blossoms, rose blossoms, semolina bran (seeds / small seeds 58.6%, millet 24%)

**Analytical constituents:**  
Crude protein 15.5% - crude oils and crude fats 6.5% - crude fibre 7% - crude ash 5.5% - calcium 0.5% - phosphorous 0.4%

**Additives per kg:**  
Nutritional additives  
Vit. A 6.500 IU - Vit. D<sub>3</sub> 520 IU - Vit. E / all rac-alpha-tocopherylacetate 58.5 mg - copper as copper (II)-sulphate, pentahydrate 3.4 mg - iodine as calcium iodate, hexahydrate 0.5 mg - iron as iron (II)-sulphate, monohydrat 32.5 mg - zinc as zinc oxide 42.3 mg - manganese as manganese (II)-oxide 22.8 mg - selenite as sodium selenite 0.1 mg

500 g Art. No.: 25922 Bar Code: 4018761259229  
3.2 kg\* Art. No.: 25929 Bar Code: 4018761259298 \*own needs



**EXPERT HAIR & SKIN**

Complete food for dwarf hamsters  
NO EXTRUDATE  
NO PELLETS



- **Supports hair & skin:** shine, strengthening, structure & cell renewal
- **Essential amino acids:** from sweet lupine & mung beans
- **Unsaturated fatty acids:** from linseed & perilla seeds
- **Siliceous millet**

**Ingredients:**  
Plata millet, pea flakes, quinoa seeds, amaranth puffed, mung beans (5%), white millet, oatkernel, spelt flakes, red millet, sweet lupin flakes (3%), Kamut®, buckwheat, barley, linseed (2.5%), sesame, carrots, perilla seeds (2%), grass seed, parsnips, milk thistle seeds, mealworms (1.5%), dandelion leaves, yarrow, lucerne, ribwort, beetroot, calcium carbonate, camomile blossoms, marigold blossoms, rose blossoms, semolina bran (millet 30.5%)

**Analytical constituents:**  
Crude protein 15.4% - crude oils and crude fats 7% - crude fibre 7% - crude ash 5.5% - calcium 0.5% - phosphorous 0.4%

**Additives per kg:**  
Nutritional additives  
Vitamin A 6.500 IU - Vitamin D<sub>3</sub> 520 IU - Vitamin E / all rac-alpha-tocopherylacetate 58.2 mg - copper as copper (II)-sulphate, pentahydrate 3.4 mg - iodine as calcium iodate, water-free 0.5 mg - iron as iron (II)-sulphate, monohydrat 32.5 mg - zinc as zinc oxide 42.3 mg - manganese as manganese (II)-oxide 22.8 mg - selenite as sodium selenite 0.1 mg

500 g Art. No.: 20924 Bar Code: 4018761209248



**EXPERT FLOWER**

Complete food for dwarf hamsters  
NO EXTRUDATE  
NO PELLETS



- **Rose blossoms, cornflower blossoms & marigold blossoms:** secondary plant substances
- **VitalPlus granivor:** special vitamin-mineral complex
- **Super-Food:** quinoa & amaranth
- **Without fruit:** to prevent diabetes

**Ingredients:**  
Plata millet, pea flakes, mung beans, quinoa seeds (6%), white millet, oatkernel, amaranth puffed (4%), red millet, spelt flakes, sweet lupin flakes, buckwheat, barley, linseed, carrots, perilla seeds, sesame, Kamut®, grass seed, parsnips, mealworms (1.5%), dandelion leaves, lucerne, yarrow, ribwort, beetroot, calcium carbonate, camomile blossoms, marigold blossoms (0.4%), red cornflower blossoms (0.3%), blue cornflower blossoms (0.3%), rose blossoms (0.1%), semolina bran (blossoms 1.5%)

**Analytical constituents:**  
Crude protein 15.1% - crude oils and crude fats 7% - crude fibre 6% - crude ash 5.5% - calcium 0.5% - phosphorous 0.4%

**Additives per kg:**  
Nutritional additives  
Vitamin A 6.500 IU - Vitamin D<sub>3</sub> 520 IU - Vitamin E / all rac-alpha-tocopherylacetate 58.2 mg - copper as copper (II)-sulphate, pentahydrate 3.4 mg - iodine as calcium iodate, water-free 0.5 mg - iron as iron (II)-sulphate, monohydrat 32.5 mg - zinc as zinc oxide 42.3 mg - manganese as manganese (II)-oxide 22.8 mg - selenite as sodium selenite 0.1 mg

500 g Art. No.: 20925 Bar Code: 4018761209255

# GerbilDream

The gerbil in particular shows us why a balanced formula is so important. These lovable little speedsters tend towards obesity. Our task is to prevent this through species-appropriate food and to take these concerns from pet owners. That's precisely what we achieve with bunny GerbilDream BASIC.



## BASIC

Complete food for GERBILS



- **Crickets & mealworms:** High-quality supply with animal protein
- **Millet:** Mealy seed and prevention of fattening
- **Herbs:** Active vital ingredients



**Ingredients:**

Plata millet, oats, barley, wheat bran, sunflower seed extracted, pea flakes, corn flakes, spelt flakes, silver millet, wheat, lucerne, corn, red millet, dari, dandelion leaves, canary seed, calcium carbonate, brewer's grain, carrots, Kamut®, linseed, carrot pomace, parsnips, chicory root, oat flakes, brewer's yeast, camomile blossoms, ribwort, inulin, sesame, beetroot, crickets (0.3%), carob, meal worms (0.2%) (millet 23%, herbs 4%)

**Analytical constituents:**

Crude protein 14% - crude oils and crude fats 4% - crude fibre 6.5% - crude ash 5.5% - calcium 0.6% - phosphorous 0.4%

**Additives per kg:**

Nutritional additives  
Vit. A 8.500 IU - Vit. D<sub>3</sub> 620 IU - Vit. E / all rac-alpha-tocopherylacetate 51 mg - copper as copper (II)-sulphate, pentahydrate 5 mg - iodine as calcium iodate, hexahydrate 0.8 mg - iron as iron (II)-sulphate, monohydrate 43 mg - zinc as zinc oxide 52 mg - manganese as manganese (II)-oxide 33 mg - selenite as sodium selenite 0.15 mg

400 g Art. No.: 26103 Bar Code: 4018761261031  
600 g Art. No.: 26101 Bar Code: 4018761261017  
4 kg\* Art. No.: 26108 Bar Code: 4018761261086 \*own needs



## EXPERT

Complete food for gerbils  
**NO EXTRUDATE**  
**NO PELLETS**



- **VitalPlus granivor:** special vitamin-mineral complex
- **High content of farinaceous seeds:** prevention of obesity
- **Dandelion & ribwort:** secondary plant substances
- **Mealworms & crickets:** balanced level of fat and protein

**Ingredients:**

Plata millet, canary seed, pea flakes, spelt flakes, quinoa seeds, Kamut®, mung beans, silver millet, oats, red millet, dari, lucerne, dandelion leaves (3%), amaranth puffed, carrots, parsnips, chicory root, sesame, ribwort (1%), oatkernel, calcium carbonate, beetroot, mealworms (1%), camomile blossoms, crickets (0.2%), semolina bran (seeds 54.6%)

**Analytical constituents:**

Crude protein 14% - crude oils and crude fats 4% - crude fibre 6.5% - crude ash 5.5% - calcium 0.6% - phosphorous 0.4%

**Additives per kg:**

Nutritional additives  
Vit. A 8.500 IU - Vit. D<sub>3</sub> 680 IU - Vit. E / all rac-alpha-tocopherylacetate 76.5 mg - copper as copper (II)-sulphate, pentahydrate 4.5 mg - iodine as calcium iodate, hexahydrate 0.65 mg - iron as iron (II)-sulphate, monohydrate 42.5 mg - zinc as zinc oxide 55.3 mg - manganese as manganese (II)-oxide 29.8 mg - selenite as sodium selenite 0.13 mg

500 g Art. No.: 26102 Bar Code: 4018761261024  
3.2 kg\* Art. No.: 26109 Bar Code: 4018761261093 \*own needs

A very successful new recipe. High-quality power ingredients like quinoa, amaranth and mung beans, with tasty herbs, mealworms and crickets.

Our VitalPlus granivor mix allows us to do without any pellets or extrudates – a big plus for picky eaters. The recipe is extremely well balanced and is very popular with gerbils, providing them with all the vitamins and minerals they need.



# MouseDream

Component variety in the right composition is particularly important for mice. Just as much as freely available food, which is only ensured through the balanced formula in bunny MouseDream BASIC. It makes mice happy and relaxed.



## BASIC

Complete food for MICE



- **Cheese & chicken:** High-quality supply with animal protein
- **Grain & seeds:** Valuable protein, unsaturated fatty acids & essential amino acids
- **Vegetables:** Active vital ingredients



**Ingredients:**

Oats, barley flakes, plata millet, pea flakes, barley, wheat bran, corn flakes, wheat flakes, sunflower seed extracted, wheat, corn, silver millet, lucerne, hemp seed, red millet, carrots, calcium carbonate, canary seed, sweet pepper, milk thistle seeds, buckwheat, kardi seed, brewer's grain, grass seed, linseed, carrot pomace, brewer's yeast, ribwort, chicken (0.5%), cheese (0.5%), sesame, inulin, oat flakes, apples, beetroot, camomile blossoms, carob (grain 57%, seeds 21%, vegetables 10%)

**Analytical constituents:**

Crude protein 14.1% - crude oils and crude fats 5% - crude fibre 7% - crude ash 5.5% - calcium 0.6% - phosphorous 0.4%

**Additives per kg:**

Nutritional additives  
 Vit. A 7.100 IU - Vit. D<sub>3</sub> 520 IU - Vit. E / all rac-alpha-tocopherylacetate 43 mg - copper as copper (II)-sulphate, pentahydrate 4.3 mg - iodine as calcium iodate, hexahydrate 0.6 mg - iron as iron (II)-sulphate, monohydrat 35 mg - zinc as zinc oxide 43 mg - manganese as manganese (II)-oxide 27.5 mg - selenite as sodium selenite 0.13 mg  
 with antioxidant alpha-tocopherol

350 g Art. No.: 26023 Bar Code: 4018761260232  
 500 g Art. No.: 26021 Bar Code: 4018761260218  
 4 kg\* Art. No.: 26028 Bar Code: 4018761260287 \*own needs



## EXPERT

Complete food for mice  
**NO EXTRUDATE**  
**NO PELLETS**



- **VitalPlus granivor:** special vitamin-mineral complex
- **Ingredients from the habitat of mice:** original, need-oriented and valuable
- **Mealworms & buffalo worms:** balanced level of fat and protein
- **Power ingredients & small seeds:** balanced & perfect size

**Ingredients:**

Plata millet, pea flakes, canary seed, barley flakes, quinoa seeds, wheat flakes, amaranth puffed, Kamut®, oatkernel, silver millet, corn crushed, buckwheat, oats, red millet, kardi seed, carrots, sweet pepper, grass seed, sesame, ribwort, lucerne, perilla seeds, hemp seed, beetroot, apples, calcium carbonate, milk thistle seeds, mealworms (0.5%), buffalo worms (0.4%), semolina bran (seeds / small seeds 47%)

**Analytical constituents:**

Crude protein 14% - crude oils and crude fats 5.5% - crude fibre 7% - crude ash 5.5% - calcium 0.6% - phosphorous 0.4%

**Additives per kg:**

Nutritional additives  
 Vit. A 7.500 IU - Vit. D<sub>3</sub> 600 IU - Vit. E / all rac-alpha-tocopherylacetate 67.5 mg - copper as copper (II)-sulphate, pentahydrate 3.9 mg - iodine as calcium iodate, hexahydrate 0.56 mg - iron as iron (II)-sulphate, monohydrat 37.5 mg - zinc as zinc oxide 48.8 mg - manganese as manganese (II)-oxide 26.3 mg - selenite as sodium selenite 0.11 mg

500 g Art. No.: 26022 Bar Code: 4018761260225  
 3,2 kg\* Art. No.: 26029 Bar Code: 4018761260294 \*own needs

Even some mice are said to decline pellets or extrudates from time to time. For those mice we have exactly the right food... a well-balanced complete feed, completely without pellets and extrudates. VitalPlus granivor ensures the proper supply of vitamins and minerals. 100% acceptance with nothing left in the bowl, just two more powerful arguments for choosing this EXPERT variety.





# RatDream

The rat loves variety just like it would find in its original habitat in Siberia and China. The balanced variety of components gives the rat a true taste experience and is a guarantee for a healthy diet.



## BASIC

Complete food for RATS



- **Cheese & chicken:** High-quality supply with animal protein
- **Linseed & pumpkinseed:** Valuable protein, unsaturated fatty acids & essential amino acids
- **Vegetables:** Active vital ingredients



**Ingredients:**  
Oats, corn, wheat, barley, wheat bran, barley flakes, sunflower seed extracted, corn flakes, pea flakes, spelt flakes, linseed (4%), pumpkin seeds (4%), lucerne, wheat flakes, calcium carbonate, carrots, brewer's grain, sweet pepper, carrot pomace, brewer's yeast, ribwort, inulin, chicken (0.5%), cheese (0.5%), chamomile blossoms, apples, beetroot, carob (vegetables 8%)

**Analytical constituents:**  
Crude protein 14.3% - crude oils and crude fats 5% - crude fibre 6.8% - crude ash 5.5% - calcium 0.6% - phosphorous 0.44%

**Additives per kg:**  
Nutritional additives  
Vit. A 7.900 IU - Vit. D<sub>3</sub> 580 IU - Vit. E / all rac-alpha-tocopherylacetate 47 mg - copper as copper (II)-sulphate, pentahydrate 4.8 mg - iodine as calcium iodate, hexahydrate 0.7 mg - iron as iron (II)-sulphate, monohydrate 39 mg - zinc as zinc oxide 48 mg - manganese as manganese (II)-oxide 31 mg - selenite as sodium selenite 0.14 mg with antioxidant alpha-tocopherol

350 g	Art. No.: 26223	Bar Code: 4018761262236
500 g	Art. No.: 26221	Bar Code: 4018761262212
1.5 kg	Art. No.: 26225	Bar Code: 4018761262250
4 kg	Art. No.: 26227	Bar Code: 4018761262274
4 kg*	Art. No.: 26228	Bar Code: 4018761262281 *own needs



## EXPERT

Complete food for rats  
NO EXTRUDATE  
NO PELLETS



- **VitalPlus granivor:** special vitamin-mineral complex
- **Mealworms & buffalo worms:** balanced level of fat and protein
- **Pumpkin seeds & oatkernel:** supplier of minerals, nutrients and vitamins
- **Crispy vital vegetables:** rich in vitamins and nutrients

**Ingredients:**  
Corn crushed, spelt flakes, pea flakes, barley, barley flakes, oat flakes, oatkernel (5.2%), buckwheat, wheat flakes, plata millet, quinoa seeds, canary seed, pumpkin seeds husked (3%), amaranth puffed, linseed, sweet pepper, carrots, ribwort, lucerne, silver millet, perilla seeds, beetroot, apples, red millet, calcium carbonate, mealworms (0.5%), buffalo worms (0.4%), semolina bran

**Analytical constituents:**  
Crude protein 14% - crude oils and crude fats 5.5% - crude fibre 6% - crude ash 5.5% - calcium 0.6% - phosphorous 0.4%

**Additives per kg:**  
Nutritional additives  
Vit. A 7.500 IU - Vit. D<sub>3</sub> 600 IU - Vit. E / all rac-alpha-tocopherylacetate 67.5 mg - copper as copper (II)-sulphate, pentahydrate 3.9 mg - iodine as calcium iodate, hexahydrate 0.56 mg - iron as iron (II)-sulphate, monohydrate 37.5 mg - zinc as zinc oxide 48.8 mg - manganese as manganese (II)-oxide 26.3 mg - selenite as sodium selenite 0.11 mg

500 g	Art. No.: 26222	Bar Code: 4018761262229
3,2 kg*	Art. No.: 26229	Bar Code: 4018761262298 *own needs

We are proud to announce that RatDream EXPERT offers 100% acceptance and with no leftovers! All components make rat hearts beat faster - the recipe is packed with superfoods and has been upgraded with buffalo worms. And, of course, all well-balanced and packed with vitamins - also without pellets and extrudates!





# BOTANICALS

»all nature BOTANICALS« by bunny stands for excellent structured food of the highest quality. The finely-tuned, component-rich mixtures were developed with a lot of know-how and attention to detail by veterinarians and small mammal experts, carefully mixed by the bunny team and lovingly filled by hand. Only the best components, which are pure and intense in flavour, are worth being used. Nature, the natural habitat of herbivores, is a model for the »all nature concept« which is 100% based on this.



# BOTANICALS

Roughage in itself is quite fantastic. It offers the herbivores a variety of culinary options, coupled with crispy-long chews. Simply ideal. So far as a snack. And now - through a special combination of raw materials - a balanced complete feed is possible!

As we've already mentioned, we love roughage, and for many years we've perfected the harvesting and drying of hay, and on the other hand, we've developed a compact plant Trimello® that balances all the nutrients and vitamins.

And now we have developed a nutritional concept: »all nature BOTANICALS«.

It consists of many unique plant, flower and herbal mixtures. Incredibly versatile, qualitatively exceptional and with a powerful taste.

But what makes these mixtures a nutritional concept? »all nature BOTANICALS« stand for different mixtures of unique structural food. It can either be fed as a snack to the traditional diet and greatly enrich the daily diet, or it is merged into a complete food, just like in a modular system.

A feeding table prepared by veterinarians helps in a simple way. So: for a complete feed, take one of the varieties of »BOTANICALS MAXI MIX«, combine it with a »MID-MIX« variety and feed the necessary »VITAMINS« as a snack. It's obviously very simple, because 1+1+1 makes 1 complete feed. You just have to stick to the feeding table, weigh it, feed it and you're done. Of course, always offer high quality hay and fresh drinking water. We offer to round off fine vegetables or a protein kick. In addition, you can offer carefully at the beginning - feed fresh food, of course. Brilliant!

Why do veterinarians recommend adding vitamins to the Botanicals mix? Doesn't that go against the entire concept?

Quiet the reverse! Anyone who knows Mother Nature can only agree with the vets. Summer, sun, sunshine .... winter, rain, mud .... the weather has it all in store for us.

And of course this also influences nature, in other words, also the plants, herbs and flowers. Depending on the weather conditions and harvest periods, the nutrients, vitamins and minerals can vary extremely. However, this isn't good for animals in the long run, as they will develop deficiencies. Of course that won't happen overnight. But in the long-term, it has enormous health implications for animals. And to be on the safe side, it is recommended to offset the natural imbalances with vitamin snacks or to administer the essential »Vitamin C« to guinea pigs. This is really simple with »Vitamin snacks« in tablet form. They taste so good, they are best fed directly by hand.

We definitely take it seriously when we claim that we can be 100 % sure that animals are being properly cared for. And we are!

The quality of each component is very important to us. Only when we use the best products, do the animals like the taste and stay healthy. We mix the fine formulas carefully ourselves and lovingly package them by hand.

## TWO FANTASTIC POSSIBILITIES

### AS A SNACK

the »BOTANICALS MAXI MIX and MID MIX« are particularly good due to their fine ingredients and natural composition. The mixture corresponds to the natural diet of herbivores and ideally completes their daily menu. All varieties taste deliciously fresh and provide a tasty variety.



### or AS A COMPLETE FOOD

the entire »all nature« concept is also perfectly suitable. It is nutrition tailored to individual needs, which can be put together as desired, as if it were a modular system. The »BOTANICALS MAXI MIX« varieties with their various flavours are used as the main ingredients and are mixed with the »BOTANICALS MID MIX« varieties in the correct proportions. In addition there are »all nature VITAMINS« and the complete structural food product is complete - without pellets and extrudates. For all those who cannot, may not or do not want to eat other processed/compressed feed components but do not want to miss out on balanced staple food. With this concept, herbivores are fully supplied in a completely natural, pure way.



THE RIGHT DOSAGE IS CRUCIAL AND MUST ALSO BE KEPT SIMPLE:

täglich daily	KG						
		250 g	500 g	1.000 g	1.500 g	2.000 g	2.500 g
MAXI MIX	●	8 g	15 g	30 g	45 g	60 g	75 g
MID MIX	●	2 g	4 g	6 g	8 g	10 g	12 g
VITAMIN	●	¼	½	¾	1	1½	2

Approximate information, quantities depending on activity level. Give high quality hay and fresh, lukewarm water daily.



For our herbivores: dwarf rabbits, guinea pigs, chinchillas & degus



# MAXI MIX

It all starts with the „MAXI-MIX“ varieties, which are the main ingredient when you want to mix a complete structural feed. Or simply give it as a snack.

## Mix with peppermint leaves & camomile blossoms

Supplementary food for  
DWARF RABBITS,  
GUINEA PIGS,  
CHINCHILLAS  
& DEGUS



**Ingredients:**  
Green oats\*, peppermint leaves (11%), ribwort, green wheat\*, horsetail, birch leaves, echinacea petals, coriander stalks, celery stalks, daisies, red clover flowers, camomile blossoms (2%)  
\*only leaves and stalks

400 g Art. No.: 31022 Bar Code: 4018761310227

## Mix with raspberry leaves & cornflower blossoms

Supplementary food for  
DWARF RABBITS,  
GUINEA PIGS,  
CHINCHILLAS  
& DEGUS



**Ingredients:**  
Green oats\*, dandelion leaves, stinging nettle leaves, ribwort, raspberry leaves (8%), green wheat\*, red cornflower blossoms (6%), blue cornflower blossoms (6%), parsley stalks, dill stalks  
\*only leaves and stalks

400 g Art. No.: 31012 Bar Code: 4018761310128

## Mix with chervil stalks & malva blossoms

Supplementary food for  
DWARF RABBITS,  
GUINEA PIGS,  
CHINCHILLAS  
& DEGUS



**Ingredients:**  
Green oats\*, peppermint leaves, ribwort, green wheat\*, celery stalks, chervil stalks (6%), raspberry leaves, malva blossoms (4%), spinach stalks, sunflower blossoms  
\*only leaves and stalks

400 g Art. No.: 31002 Bar Code: 4018761310029

# MID MIX

Six fantastic „MID-MIX“ varieties: they are the second component of the complete structural feed. Or here as well: Just as a snack daily to the conventional diet.

Mix with hibiscus blossoms & parsley stems

Mix with daisies & red clover flowers

Mix of ribwort & rose blossoms

Mix of echinacea petals & sunflower blossoms

Mix with marigold blossoms & rose blossoms

Mix with blue cornflower blossoms & echinacea

Supplementary food for DWARF RABBITS, GUINEA PIGS, CHINCHILLAS & DEGUS

Supplementary food for DWARF RABBITS, GUINEA PIGS, CHINCHILLAS & DEGUS

Supplementary food for DWARF RABBITS, GUINEA PIGS, CHINCHILLAS & DEGUS

Supplementary food for DWARF RABBITS, GUINEA PIGS, CHINCHILLAS & DEGUS

Supplementary food for DWARF RABBITS, GUINEA PIGS, CHINCHILLAS & DEGUS

Supplementary food for DWARF RABBITS, GUINEA PIGS, CHINCHILLAS & DEGUS



**Ingredients:** Stinging nettle leaves, parsley stems (18%), dill stalks, peppermint leaves, dandelion leaves, marigold blossoms, echinacea petals, hibiscus blossoms (5%)

**Ingredients:** Marigold petals, red clover flowers (30%), rose blossoms, red cornflower blossoms, daisies (3%)

**Ingredients:** Ribwort (80%), rose blossoms (20%)

**Ingredients:** Echinacea petals (88%), sunflower blossoms (12%)

**Ingredients:** Marigold blossoms whole (40%), rose blossoms (25%), blue cornflower blossoms, echinacea

**Ingredients:** Blue cornflower blossoms (25%), echinacea (25%), rose blossoms, ribwort

150 g Art. No.: 31101 Bar Code: 4018761311019

120 g Art. No.: 31111 Bar Code: 4018761311118

120 g Art. No.: 31131 Bar Code: 4018761311316

140 g Art. No.: 31151 Bar Code: 4018761311514

130 g Art. No.: 31161 Bar Code: 4018761311613

120 g Art. No.: 31171 Bar Code: 4018761311712

# MINI MIX

Our »BOTANICALS MINI MIXE« contain the ideal amount on the one hand to vary the daily diet of the animals and on the other hand to find out what the darlings like the most.

Mix with chervil stalks & malva blossoms

Mix with raspberry leaves & cornflower blossoms

Mix with peppermint leaves & camomile blossoms

Mix with hibiscus blossoms & parsley stems

Mix of ribwort & rose blossoms

Mix of echinacea petals & sunflower blossoms

Supplementary food for DWARF RABBITS, GUINEA PIGS, CHINCHILLAS & DEGUS

Supplementary food for DWARF RABBITS, GUINEA PIGS, CHINCHILLAS & DEGUS

Supplementary food for DWARF RABBITS, GUINEA PIGS, CHINCHILLAS & DEGUS

Supplementary food for DWARF RABBITS, GUINEA PIGS, CHINCHILLAS & DEGUS

Supplementary food for DWARF RABBITS, GUINEA PIGS, CHINCHILLAS & DEGUS

Supplementary food for DWARF RABBITS, GUINEA PIGS, CHINCHILLAS & DEGUS



**Ingredients:**  
Green oats\*, peppermint leaves, ribwort, green wheat\*, celery stalks, chervil stalks (6%), raspberry leaves, malva blossoms (4%), spinach stalks, sunflower blossoms  
\*only leaves and stalks

**Ingredients:**  
Green oats\*, dandelion leaves, stinging nettle leaves, ribwort, raspberry leaves (8%), green wheat\*, red cornflower blossoms (6%), blue cornflower blossoms (6%), parsley stems, dill stalks  
\*only leaves and stalks

**Ingredients:**  
Green oats\*, peppermint leaves (11%), ribwort, green wheat\*, horsetail, birch leaves, echinacea petals, coriander stalks, celery stalks, daisies, red clover flowers, camomile blossoms (2%)  
\*only leaves and stalks

**Ingredients:**  
Stinging nettle leaves, parsley stems (18%), dill stalks, peppermint leaves, dandelion leaves, marigold blossoms, echinacea petals, hibiscus blossoms (5%)

**Ingredients:**  
Ribwort (80%), rose blossoms (20%)

**Ingredients:**  
Echinacea (88%), sunflower blossoms (12%)

# VITAMIN

„VITAMIN SNACKS“ are an enormously important part of the in the structural complete feed. They are the same natural imbalances in terms of vitamin and minerals.

## Multi-vitamin-snack

Supplementary food for ADULT DWARF RABBITS, CHINCHILLAS & DEGUS in tablet form

## Vitamin C-snack

Supplementary food for ADULT GUINEA PIGS in tablet form



- ideal to give directly by hand as a vitamin-snack
- 100% balanced
- plus minerals



- ideal to give directly by hand as a vitamin-snack
- extra vitamin C
- plus Vitamin A, E + D<sub>3</sub>
- plus minerals

**Ingredients:**  
Wholemeal spelt flour, spelt grits, apple pomace, rice flour, growth of permanent meadows, cornstarch, inulin

**Additives per kg:**  
Nutritional additives  
Vit. A 200.000 IU - Vit. D<sub>3</sub> 14.000 IU - Vit. E / all rac-alpha-tocopherylacetate 1.200 mg - copper as copper (II)-sulphate, pentahydrate 120 mg - iodine as calcium iodate, waterfree 18 mg - iron as iron (II)-sulphate, monohydrat 1.000 mg - zinc as zinc oxide 1.200 mg - manganese as manganese (II)-oxide 800 mg - selenite as sodium selenite 3.60 mg

150 g Art. No.: 32004 Bar Code: 4018761320042

**Ingredients:**  
Wholemeal spelt flour, spelt grits, apple pomace, rice flour, growth of permanent meadows, cornstarch, inulin

**Additives per kg:**  
Nutritional additives  
Vit. A 180.000 IU - Vit. D<sub>3</sub> 12.600 IU - Vit. E / all rac-alpha-tocopherylacetate 1.080 mg - Vit. C as ascorbylmonophosphate, calcium-sodium-salt 15.750 mg - copper as copper (II)-sulphate, pentahydrate 108 mg - iodine as calcium iodate, water-free 16.2 mg - iron as iron (II)-sulphate, monohydrat 900 mg - zinc as zinc oxide 1.080 mg - manganese as manganese (II)-oxide 720 mg - selenite as sodium selenite 3.24 mg

150 g Art. No.: 32005 Bar Code: 4018761320059

# VEGGIE & PROTEIN

If you want to spice up the bowl with a bit of vegetables or if you want to offer an extra protein kick: Welcome! We have exactly the right thing.

## Tomato slices

Supplementary food for DWARF RABBITS, GUINEA PIGS, CHINCHILLAS & DEGUS

## Pumpkin pieces

Supplementary food for DWARF RABBITS, GUINEA PIGS, CHINCHILLAS & DEGUS

## Sweet Lupin flakes

Supplementary food for DWARF RABBITS, GUINEA PIGS, CHINCHILLAS & DEGUS



**Ingredients:**  
Tomato slices, dried  
**Analytical constituents:**  
Crude fibre 11% - starch 1%

35 g Art. No.: 32001 Bar Code: 4018761320011



**Ingredients:**  
Pumpkin pieces, dried  
**Analytical constituents:**  
Crude fibre 7% - starch 3%

80 g Art. No.: 32002 Bar Code: 4018761320028



**Ingredients:**  
Organic sweet lupins, hulled and rolled  
**Analytical constituents:**  
Crude protein 38%

140 g Art. No.: 32003 Bar Code: 4018761320035



# HAY

Hay is one of the most important main foods for small mammals. Herbivores in particular need a big portion of it every day. But the quality of hay varies widely... it is our role to deliver only the very best. We pay extremely close attention to biodiversity, cutting times, mowing, gentle drying and packaging by hand. That is how we ensure the best hay quality in countless individual steps.



# HAY FROM NATURE CONSERVATION MEADOWS



Super-premium quality hay for dwarf rabbits and rodents.  
A comprehensive hay concept for pets and nature, retailers and consumers.



## THE HAY STORY

It is the most original and natural hay you can imagine. Of course it is coming from nature protection areas: Untreated with fertilizers or pesticides, they are the home to a diversity of plants and herbs that no ordinary meadow can reach.

But even nature-protected meadows have to be mown (at a late cutting time), as this is the only way to maintain the diversity of plants, making them attractive for animals.

This is all part of the bunny sustainability cycle. We mow the nature-protected meadows so that the animals can continue to find valuable food and, in doing so, we gain hay with a unique quality, composition and structure.



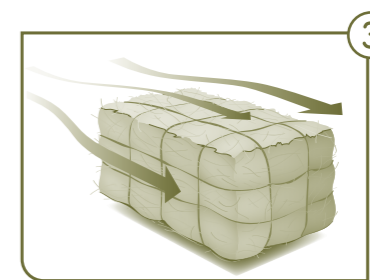
**hand-picked and packed by hand**

## FROM THE MEADOW INTO THE BAG...



**1**  
Nature conservation meadows

The unique variety of plants is characteristic for nature conservation meadows and, therefore, is particularly attractive for the animals. It goes without saying that these areas may not be treated with fertilisers or sprays – nature conservation meadows are really untouched.



**3**  
CO<sub>2</sub>-neutral drying in warm air

After the mowing, the hay – now compressed into bales – is, so to speak, subjected to a wellness treatment. It is very gently dried by warm air in an environmentally friendly CO<sub>2</sub>-neutral procedure. Thus, the natural colour, the varied taste and the many fine plant and herb parts survive. That is unique!



**2**  
Mowing to preserve the variety of plants

Regular mowing is important to preserve the variety of plants. If this is neglected, a monoculture would arise. Few species of plants would assert themselves, and the variety would not exist any longer. These meadows would be unattractive for many animals - as a habitat and as a source of food. Therefore, we are active here, so that the natural habitats continue to remain attractive for the animals in all respects.

The meadows are not mown before the middle of June - so that any breeding animals are not disturbed. The nature conservation meadows are examined by experts who officially approve the mowing.



**4**  
hand-picked and packed by hand in hay-fresh bags

Here, work by hand is important. The hay is carefully loosened and the paper bags are carefully filled by hand with all the finest plant and herb parts, as well as the long, crisp stems.

The hay-fresh bags are something quite special. Just a small window provides a view of the fantastic hay. Thus, you can get a good impression of the quality. On the other hand, the contents is protected from bleaching and the fine holes provide optimum air circulation. The hay is perfectly stored and reaches the hay rack with all its quality.



- unique plants and variety of herbs
- finest flower and herb parts
- varied taste
- from untreated meadows
- gently dried in warm air - CO<sub>2</sub> neutral
- Long, crisp stems



## Nature

Single food for  
DWARF RABBITS  
& RODENTS



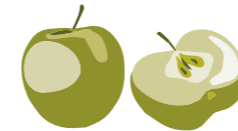
## with meadow flowers

Mixed food for  
DWARF RABBITS  
& RODENTS



## with organic vegetables

Mixed food for  
DWARF RABBITS  
& RODENTS



## with organic apple pieces

Mixed food for  
DWARF RABBITS  
& RODENTS  
(except dwarf hamsters & degus)



## with dandelion leaves

Mixed food for  
DWARF RABBITS  
& RODENTS



## with mealworms

Mixed food for  
HAMSTERS,  
DWARF HAMSTERS,  
GERBILS, MICE & RATS



**Analytical constituents:**  
Crude protein 8% - crude fibre 26%

**Ingredients:**  
Hay from nature conservation meadows, camomile blossoms, marigold blossoms, daisies (blossoms 3%)

**Ingredients:**  
Hay from nature conservation meadows, carrots\*, tomatoes\*, celery\* (vegetables 8%)  
\*from certified organic growing facilities DE-ÖKO-001

**Ingredients:**  
Hay from nature conservation meadows, apple pieces\* 10%  
\*from certified organic growing facilities DE-ÖKO-001

**Ingredients:**  
Hay from nature conservation meadows, dandelion leaves 3%

**Ingredients:**  
Hay from nature conservation meadows, mealworms 2%

600 g Art. No.: 14206 Bar Code: 4018761142064  
1,7 kg Art. No.: 14211 Bar Code: 4018761142118

250 g Art. No.: 14221 Bar Code: 4018761142217

250 g Art. No.: 14222 Bar Code: 4018761142224

250 g Art. No.: 14223 Bar Code: 4018761142231

250 g Art. No.: 14224 Bar Code: 4018761142248

250 g Art. No.: 14225 Bar Code: 4018761142255

# MY FAVORITE HAY FROM NATURE CONSERVATION MEADOWS

A diverse hay derived from pristine nature conservation meadows in a handy snack form.



## Pumpkin

Mixed food for DWARF RABBITS & RODENTS

Ingredients:  
Hay from nature conservation meadows, pumpkin (6%)

100 g Art. No.: 14257 Bar Code: 4018761142576

## Pure

Single food for DWARF RABBITS & RODENTS



Analytical constituents:  
Crude fibre 26% - Crude protein 8%

100 g Art. No.: 14251 Bar Code: 4018761142514

## Organic-sea buckthorn

Mixed food for DWARF RABBITS & RODENTS



Ingredients:  
Hay from nature conservation meadows, bio sea buckthorn pomace\* 4,5%  
\*from certified organic growing facilities DE-ÖKO-021

100 g Art. No.: 14252 Bar Code: 4018761142521

## Strawberry-Peppermint

Mixed food for DWARF RABBITS & RODENTS



Ingredients:  
Hay from nature conservation meadows, peppermint leaves 2%, strawberries 1%

100 g Art. No.: 14253 Bar Code: 4018761142538

## Parsnips & Sweet Pepper

Mixed food for DWARF RABBITS & RODENTS



Ingredients:  
Hay from nature conservation meadows, parsnips 5%, sweet pepper 5%

100 g Art. No.: 14254 Bar Code: 4018761142545

## Sunflower & Malva Blossoms

Mixed food for DWARF RABBITS & RODENTS



Ingredients:  
Hay from nature conservation meadows, sunflower blossoms 1.5%, malva blossoms 1%

100 g Art. No.: 14255 Bar Code: 4018761142552

## Worm-Mix Buffalo- & Mealworms

Mixed food for HAMSTERS, DWARF HAMSTERS, GERBILS, MICE & RATS



Ingredients:  
Hay from nature conservation meadows, mealworms 1%, buffalo worms 1%

100 g Art. No.: 14256 Bar Code: 4018761142569

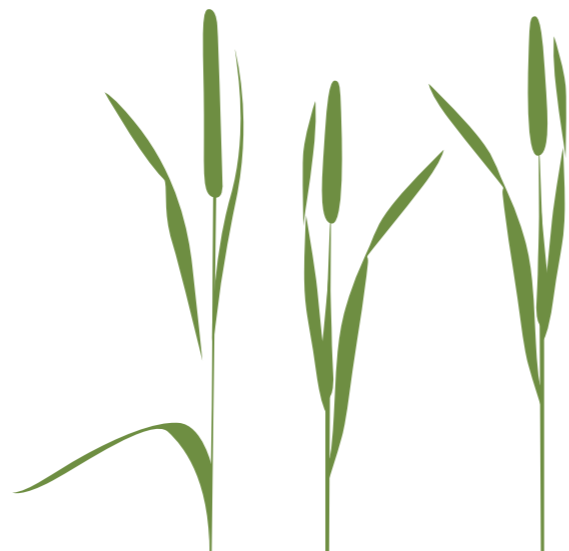
# TIMOTHY

Due to the gentle and careful processing in all steps, it achieves many positive features for dwarf rabbits and rodents. With a rough structure, Timothy ensures natural tooth abrasion due to the long chewing time and at the same time, it promotes natural intestine activity. The optimal calcium-phosphorus content, which has a positive effect on the bladder, can particularly be emphasized.

Timothy is a high quality product from Germany, which was carefully processed and packed by hand.



# TIMOTHY



# TIMOTHY

Single food for  
DWARF RABBITS  
& RODENTS



- German Timothy – handpacked
- low calcium-content – positive for animals with bladder problems
- high crude fibre content - positive for intestinal peristalsis
- long fibers - long chewing time, natural tooth abrasion

Analytical constituents:  
Crude protein 5% - crude fibre 30%

125 g	Art. No.: 14410	Bar Code: 4018761144105
700 g	Art. No.: 14411	Bar Code: 4018761144112
3 kg	Art. No.: 14413	Bar Code: 4018761144136

# FRESHGRASS HAY

Hay is a basic food for many animals. The percentage of hay in the menu is high and so its quality is very important. This is a decisive factor for the degree of acceptance but also for a balanced diet and for meeting need requirements holistically. bunny FreshGrass Hay provides the highest quality with maximum plant diversity.



## ORIGIN, QUALITY AND PROCESSING

Plant diversity, processing and fibre structure are decisive factors for premium hay. We ensure consistent product quality with our high quality demands.

We ensure that the hay provides maximum taste and nutrients to the animals through its diversity of plants. In order for it not to get lost during processing, only hay that has been gently dried indoors is used. In this way we avoid damaging environmental factors and the hay remains natural, just like directly from the harvest, without any loss of vitamins.

And because hay should be rich in fibres, crunchy & dust-free, only this kind of quality hay goes into our bags. That's because crunchy stalks and optimum crude fibre content is necessary for optimum teeth wear and a healthy gastro-intestinal tract. Dust simply doesn't belong in a hay bag. Quite the opposite, it is rather questionable for the respiratory tract and eye areas of the animals.

We ensure particularly good hay quality so that the animals do well.



NATURAL PLANT DIVERSITY



GENTLE INDOOR DRYING



RICH IN FIBRES, CRISP & DUST-FREE

Timothy, meadow fescue, meadow foxtail, ryegrass, red fescue, bluegrass, bentgrass, cocksfoot, creeping red fescue, german ryegrass, dandelion, silverweed, chickweed, yarrow, ribwort, white clover, red clover, birdsfoot trefoil

## Pure nature

Single food for DWARF RABBITS & RODENTS



Analytical constituents:  
Crude protein 12% - crude fibre 23%

750 g Art. No.: 71115 Bar Code: 4018761711154  
3 kg Art. No.: 71117 Bar Code: 4018761711178

## Garden hapiness

Single food for DWARF RABBITS & RODENTS



Ingredients:  
Hay, carrots, parsley root, chicory root, celery, rosehip peel, birch leaves, cornflower blossoms, marigold blossoms, currant leaves, cowslip, rose blossoms (vegetables 2.6%, blossoms 0.2%, leaves 0.2%)

2 kg Art. No.: 14034 Bar Code: 4018761140343



Apples



Blossoms



Vital-vegetables



Rosehip



Camomile



Carrots

Mixed food for  
DWARF RABBITS  
& RODENTS  
(except dwarf hamsters & degus)

Mixed food for  
DWARF RABBITS  
& RODENTS

Mixed food for  
DWARF RABBITS  
& RODENTS

Mixed food for  
DWARF RABBITS  
& RODENTS

Mixed food for  
DWARF RABBITS  
& RODENTS

Mixed food for  
DWARF RABBITS  
& RODENTS



Ingredients:  
Hay, apples 10%

Ingredients:  
Hay, malva blossoms, marigold blossoms, rose blossoms, camomile blossoms  
(blossoms 1.5%)

Ingredients:  
Hay, beetroot, sweet pepper, parsnips (vegetables 6%)

Ingredients:  
Hay, rosehip peel 5%

Ingredients:  
Hay, camomile blossoms 6%

Ingredients:  
Hay, carrots 10%

500 g Art. No.: 14010 Bar Code: 4018761140107

500 g Art. No.: 14020 Bar Code: 4018761140206

500 g Art. No.: 14018 Bar Code: 4018761140183

500 g Art. No.: 14016 Bar Code: 4018761140169

500 g Art. No.: 14014 Bar Code: 4018761140145

500 g Art. No.: 14012 Bar Code: 4018761140121



# HEALTHFOOD & CARE

There will always be situations in life that challenge both pets and their owners. General malaise, an unstable immune system, stress situations, a change of coat, skin irritations... Luckily, there is not always a need to worry. Often all you need are the right functional products from the HealthFood or Care segments at the right time.



# HealthFood

## Products for a better life

The new HEALTH series.  
Preventive, effective, natural.

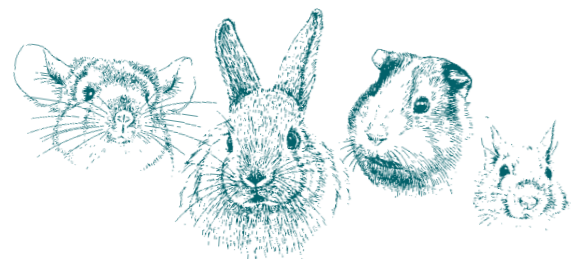
### Functional products for special needs

The HEALTH product range is expanded from 6 to a total of 14 products. The most frequently occurring health problems of small mammals are taken into account here. It is important to us to be able to help the pet owner with the right product at any time.

The health of the animals is just as important to the animal owners as its own.

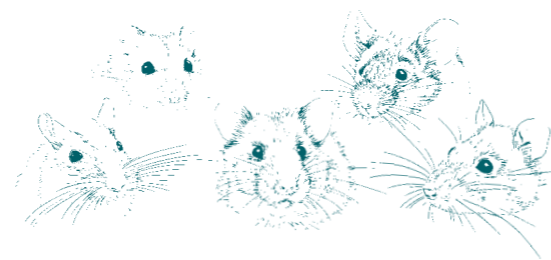
A full-fledged diet, optimal husbandry conditions and employment offer the best conditions to protect and maintain health, well-being.

Prevention is becoming increasingly important and great importance is attached to naturalness and transparency.



The products of the HEALTH series are oriented towards maintaining health & convalescence and convince with high-quality ingredients.

- stabilization of health
- protection of health
- accelerated recovery
- optimal support of the body
- increased vitality
- more energy and joy of life
- higher energy level



FREE from preservatives, flavor enhancers, added sugar, colourants and flavors



### ProDental

Complete feed for adult dwarf rabbits

Dental problems or loss of teeth means that dwarf rabbits are impaired in their food intake and cannot cover their needs anymore. ProDental is tailored to this requirement so feeding and supply are ensured.



- adjusted pellet size for dwarf rabbits with incomplete teeth or dental problems
- high acceptance and appetising
- high energy density - to build body mass
- contains water lentil protein and spirulina
- with inulin

#### Ingredients:

Growth of permanent meadows (timothy, meadow fescue, meadow foxtail, german ryegrass, red fescue, blue grass, cocksfoot, velvet grass, annual panic grass, white ragweed, vernal grass, couch grass, tussock grass, reed canary grass, white clover, red clover, dandelion leaves, yarrow herb, ribwort, caraway, cow parsley, meadow sweet, common hornwort, bedstraw, thyme-leaved speedwell, bush vetch, comfrey, bedstraw-meadow thistle, daisies, germander speedwell, lady's mantle, greater burnet-saxifrage, narrow-leaved vetch, meadow saxifrage, crested dogtail grass, spring cinquefoil, green field-speedwell, common whitlow-grass, autumn dandelion, red ragweed, cowslip, small clover), timothy, oat peel bran, oat flakes, wheat bran, duckweed protein (7.5%), carrot pomace, linseed extracted, rape seed extracted, sunflower seed extracted, milk thistle seeds, brewer's grain, brewer's yeast, spirulina (1%), lignocellulose, dandelion leaves, dandelion root, inulin (0.6%), rosehip peel, stinging nettle leaves, ribwort leaves, camomile blossoms

#### Analytical constituents:

Crude protein 14% · crude oils and crude fats 3.8% · crude fibre 18% · crude ash 7% · calcium 0.65% · phosphorous 0.4% · sodium 0.21%

#### Additives per kg:

Nutritional additives  
Vitamin A 12.000 IU · Vitamin D<sub>3</sub> 840 IU · Vitamin E / all rac-alpha-tocopherylacetate 72 mg · Vitamin C as sodium calcium ascorbyl phosphate 600 mg · copper as copper (II)-sulphate, pentahydrate 7.2 mg · iodine as calcium iodate, waterfree 1.08 mg · iron as iron (II)-sulphate, monohydrate 60 mg · zinc as zinc oxide 72 mg · manganese as manganese (II)-oxide 48 mg · selenite as sodium selenite 0.22 mg

800 g

Art. No.: 12076

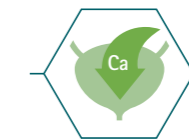
Bar Code: 4018761120765



### UroLowCalcium

Complete feed for adult dwarf rabbits

Plants and herbs – natural components in general – can have various positive effects on the body. A balanced nutrition can actively support the organism.



- low calcium-content
- with Timothy
- crude fibre to starch ratio 6.1 : 1
- selected plants in pharmacopoeial quality to support urination such as restharrow root, birch tree and nettle leaves
- contains stabilised vitamin C to promote water intake and flushing the urinary tract
- prevention of urinary gravel

#### Ingredients:

Timothy (41%), oat peel bran, sunflower seed extracted, growth of permanent meadows, linseed extracted, carrot pomace, rape seed extracted, linseed, rose petals, blue cornflower blossoms, birch leaves (1.5%), inulin, marigold petals, spiny rest harrow root (0.75%), stinging nettle leaves (0.75%), cellobiose, thyme, parsley root, lovage leaves, juniper berries, black currant

Crude fibre to starch ratio: 6.1 : 1

#### Analytical constituents:

Crude protein 11% · crude oils and crude fats 3% · crude fibre 22% · crude ash 8% · calcium 0.55% · phosphorous 0.35% · sodium 0.18%

#### Additives per kg:

Nutritional additives  
Vitamin A 8.277 IU · Vitamin D<sub>3</sub> 579 IU · Vitamin E / all rac-alpha-tocopherylacetate 49.7 mg · Vitamin C as sodium calcium ascorbyl phosphate 580 mg · copper as copper (II)-sulphate, pentahydrate 4.97 mg · iodine as calcium iodate, waterfree 0.74 mg · zinc as zinc oxide 49.7 mg · manganese as manganese (II)-oxide 33.1 mg · selenite as sodium selenite 0.15 mg

800 g

Art. No.: 12081

Bar Code: 4018761120819





## ProFIT

Supplementary food for dwarf rabbits, guinea pigs, chinchillas and degus

To support in stressful situations, such as

- New environment
- Socialisation with a new partner
- Change of coat
- Change of environment
- Change of weather
- Change from indoor to outdoor cage

These stress situations literally go straight to the stomach or intestine, or have a negative effect on the animals in other ways. The ingredients of ProFIT provide support where it is needed.



**Ingredients:**  
Oat peel bran, carrot pomace, wheat bran, sunflower seed extracted, fruit pomace, linseed extracted, brewer's grain\*, carob, brewer's yeast\*, chamomile blossoms (1%), calcium carbonate, chicory powder (0.6% inulin)(\*total 4%)

**Analytical constituents:**  
Crude protein 12.5% - crude oils and crude fats 2.9% - crude fibre 18.5% - crude ash 6.4% - calcium 0.6% - phosphorous 0.4%

**Additives per kg:**  
Nutritional additives  
Vitamin A 10.000 IU - Vitamin D<sub>3</sub> 700 IU - Vitamin E / all rac-alpha-tocopherylacetate 60 mg - copper as copper (II)-sulphate, pentahydrate 6 mg - iodine as calcium iodate, waterfree 0.9 mg - iron as iron (II)-sulphate, monohydrat 50 mg - zinc as zinc oxide 60 mg - manganese as manganese (II)-oxide 40 mg - selenite as sodium selenite 0.18 mg

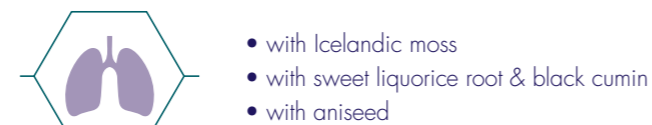
200 g Art. No.: 12040 Bar Code: 4018761120406  
2.5 kg\* Art. No.: 12503 Bar Code: 4018761125036 \*own needs



## BronchoPlus

Supplementary food for dwarf rabbits, guinea pigs, chinchillas and degus

Plants and herbs – natural components in general – can have various positive effects on the body. In case of extraordinary need you can support and treat the organism by means of supplementary food.



**Ingredients:**  
Growth of permanent meadows (timothy, meadow fescue, meadow foxtail, German ryegrass, red fescue, blue grass, cocksfoot, velvet grass, annual panicle grass, white ragweed, vernal grass, couch grass, tussock grass, reed canary grass, white clover, red clover, dandelion leaves, yarrow herb, ribwort, caraway, cow parsley, meadow sweet, common hornwort, bedstraw, thyme-leaved speedwell, bush vetch, comfrey, bedstraw-meadow thistle, daisies, germander speedwell, lady's mantle, greater burnet-saxifrage, narrow-leaved vetch, meadow saxifrage, crested dogtail grass, spring cinquefoil, green field-speedwell, common whitlow-grass, autumn dandelion, red ragweed, cowslip, small clover), oat peel bran, wheat bran, oat flakes, malt germ, linseed, fruit pomace, aniseed (1%), sweet liquorice root (0.9%), black cumin (0.5%), icelandic moss (0.4%)

**Analytical constituents:**  
Crude protein 12% - crude oils and crude fats 3.5% - crude fibre 17% - crude ash 7% - calcium 0.6% - phosphorous 0.4%

**Additives per kg:**  
Nutritional additives  
Vitamin A 10.000 IU - Vitamin D<sub>3</sub> 700 IU - Vitamin E / all rac-alpha-tocopherylacetate 60 mg - copper as copper (II)-sulphate, pentahydrate 6 mg - iodine as calcium iodate, waterfree 0.9 mg - iron as iron (II)-sulphate, monohydrat 50 mg - zinc as zinc oxide 60 mg - manganese as manganese (II)-oxide 40 mg - selenite as sodium selenite 0.18 mg

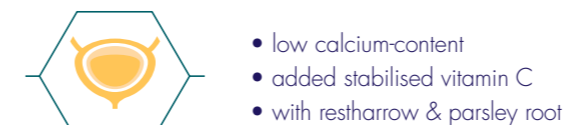
200 g Art. No.: 12058 Bar Code: 4018761120581



## UroVital

Supplementary food for dwarf rabbits, guinea pigs, chinchillas and degus

Plants and herbs – natural components in general – can have various positive effects on the body. In case of extraordinary need you can support and treat the organism by means of supplementary food.



**Ingredients:**  
Growth of permanent meadows (timothy, meadow fescue, meadow foxtail, German ryegrass, red fescue, blue grass, cocksfoot, velvet grass, annual panicle grass, white ragweed, vernal grass, couch grass, tussock grass, reed canary grass, white clover, red clover, dandelion leaves, yarrow herb, ribwort, caraway, cow parsley, meadow sweet, common hornwort, bedstraw, thyme-leaved speedwell, bush vetch, comfrey, bedstraw-meadow thistle, daisies, germander speedwell, lady's mantle, greater burnet-saxifrage, narrow-leaved vetch, meadow saxifrage, crested dogtail grass, spring cinquefoil, green field-speedwell, common whitlow-grass, autumn dandelion, red ragweed, cowslip, small clover), oat peel bran, timothy, sunflower seed extracted, malt germ, oat flakes, linseed extracted, fruit pomace, birch leaves, stinging nettle leaves, spiny rest harrow root (0.75%), thyme, parsley root (0.5%), lovage leaves, black currant, juniper berries

**Analytical constituents:**  
Crude protein 12.6% - crude oils and crude fats 3% - crude fibre 19.5% - crude ash 7% - calcium 0.6% - phosphorous 0.4%

**Additives per kg:**  
Nutritional additives  
Vitamin A 8.400 IU - Vitamin D<sub>3</sub> 600 IU - Vitamin E / all rac-alpha-tocopheryl-acetate 50 mg - Vitamin C as sodium calcium ascorbyl phosphate 600 mg - copper as copper (II)-sulphate, pentahydrate 5.1 mg - iodine as calcium iodate, waterfree 0.76 mg - iron as iron (II)-sulphate, monohydrat 42.5 mg - zinc as zinc oxide 51 mg - manganese as manganese (II)-oxide 34 mg - selenite as sodium selenite 0.15 mg

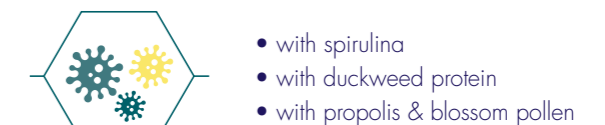
200 g Art. No.: 12055 Bar Code: 4018761120550



## ImmunPower

Supplementary food for dwarf rabbits, guinea pigs, chinchillas and degus

Plants and herbs – natural components in general – can have various positive effects on the body. In case of extraordinary need you can support and treat the organism by means of supplementary food.



**Ingredients:**  
Growth of permanent meadows (timothy, meadow fescue, meadow foxtail, German ryegrass, red fescue, blue grass, cocksfoot, velvet grass, annual panicle grass, white ragweed, vernal grass, couch grass, tussock grass, reed canary grass, white clover, red clover, dandelion leaves, yarrow herb, ribwort, caraway, cow parsley, meadow sweet, common hornwort, bedstraw, thyme-leaved speedwell, bush vetch, comfrey, bedstraw-meadow thistle, daisies, germander speedwell, lady's mantle, greater burnet-saxifrage, narrow-leaved vetch, meadow saxifrage, crested dogtail grass, spring cinquefoil, green field-speedwell, common whitlow-grass, autumn dandelion, red ragweed, cowslip, small clover), oat peel bran, timothy, oat flakes, wheat bran, sunflower seed extracted, rape seed extracted, duckweed protein (3%), linseed extracted, linseed, dandelion root, dandelion leaves, spirulina (1%), stinging nettle leaves, rosehip peel, chamomile blossoms, blossom pollen\*, propolis\* (\*together 0.05%)

**Analytical constituents:**  
Crude protein 14.6% - crude oils and crude fats 4.5% - crude fibre 19% - crude ash 7% - calcium 0.65% - phosphorous 0.4%

**Additives per kg:**  
Nutritional additives  
Vitamin A 12.000 IU - Vitamin D<sub>3</sub> 840 IU - Vitamin E / all rac-alpha-tocopheryl-acetate 72 mg - Vitamin C as sodium calcium ascorbyl phosphate 900 mg - copper as copper (II)-sulphate, pentahydrate 7.2 mg - iodine as calcium iodate, waterfree 1.08 mg - iron as iron (II)-sulphate, monohydrat 60 mg - zinc as zinc oxide 72 mg - manganese as manganese (II)-oxide 48 mg - selenite as sodium selenite 0.22 mg

200 g Art. No.: 12073 Bar Code: 4018761120734



## GastroBalance

Supplementary food for dwarf rabbits, guinea pigs, chinchillas and degus

Plants and herbs – natural components in general – can have various positive effects on the body. In case of extraordinary need you can support and treat the organism by means of supplementary food.



- with sage leaves
- with camomile blossoms
- with fennel seed

### Ingredients:

Growth of permanent meadows (timothy, meadow fescue, meadow foxtail, German ryegrass, red fescue, blue grass, cocksfoot, velvet grass, annual panicle grass, white ragweed, vernal grass, couch grass, tussock grass, reed canary grass, white clover, red clover, dandelion leaves, yarrow herb, ribwort, caraway, cow parsley, meadow sweet, common hornwort, bedstraw, thyme-leaved speedwell, bush vetch, comfrey, bedstraw-meadow thistle, daisies, germander speedwell, lady's mantle, greater burnet-saxifrage, narrow-leaved vetch, meadow saxifrage, crested dogtail grass, spring cinquefoil, green field-speedwell, common whitlow-grass, autumn dandelion, red ragweed, cowslip, small clover), oat peel bran, carrot pomace, oat flakes, wheat bran, linseed extracted, brewer's grain, brewer's yeast, fennel seed (0.68%), cumin seeds, aniseed, peppermint leaves, yarrow herb, sage leaves (0.68%), oak bark, camomile blossoms (0.28%), thyme

### Analytical constituents:

Crude protein 12% - crude oils and crude fats 3% - crude fibre 16% - crude ash 6.5% - calcium 0.6% - phosphorous 0.4%

### Additives per kg:

#### Nutritional additives

Vitamin A 10.000 IU - Vitamin D<sub>3</sub> 700 IU - Vitamin E / all rac-alpha-tocopherylacetate 60 mg - copper as copper (II)-sulphate, pentahydrate 6 mg - iodine as calcium iodate, waterfree 0.9 mg - iron as iron (II)-sulphate, monohydrat 50 mg - zinc as zinc oxide 60 mg - manganese as manganese (II)-oxide 40 mg - selenite as sodium selenite 0.18 mg



## HerbalAid

Complete food for dwarf rabbits, guinea pigs, chinchillas and degus in powderform



- assisted feeding in case of low appetite, after surgeries
- high acceptance
- appetising
- high energy density - to build body mass
- contains the prebiotic inulin

### Ingredients:

Growth of permanent meadows (timothy, meadow fescue, meadow foxtail, German ryegrass, red fescue, blue grass, cocksfoot, velvet grass, annual panicle grass, white ragweed, vernal grass, couch grass, tussock grass, reed canary grass, white clover, red clover, dandelion leaves, yarrow herb, ribwort, caraway, cow parsley, meadow sweet, common hornwort, bedstraw, thyme-leaved speedwell, bush vetch, comfrey, bedstraw-meadow thistle, daisies, germander speedwell, lady's mantle, greater burnet-saxifrage, narrow-leaved vetch, meadow saxifrage, crested dogtail grass, spring cinquefoil, green field-speedwell, common whitlow-grass, autumn dandelion, red ragweed, cowslip, small clover), timothy, oat peel bran, wheat bran, oat flakes, duckweed protein, carrot pomace, linseed extracted, sunflower seed extracted, rape seed extracted, milk thistle seeds, brewer's grain, brewer's yeast, spirulina, lignocellulose, dandelion root, dandelion leaves, inulin (0.6%), stinging nettle leaves, rosehip peel, ribwort leaves, camomile blossoms

### Analytical constituents:

Crude protein 14% - crude oils and crude fats 3.8% - crude fibre 18.5% - crude ash 7% - calcium 0.65% - phosphorous 0.4% - sodium 0.21%

### Additives per kg:

#### Nutritional additives

Vitamin A 11.760 IU - Vitamin D<sub>3</sub> 823 IU - Vitamin E / all rac-alpha-tocopherylacetate 70.6 mg - Vitamin C as sodium calcium ascorbyl phosphate 588 mg - copper as copper (II)-sulphate, pentahydrate 7.06 mg - iodine as calcium iodate, waterfree 1.06 mg - iron as iron (II)-sulphate, monohydrat 58.8 mg - zinc as zinc oxide 70.6 mg - manganese as manganese (II)-oxide 47 mg - selenite as sodium selenite 0.21 mg

### Technological additives:

Microcrystalline cellulose, Carboxymethyl cellulose



## Hair & SkinCare

Supplementary food for hamsters, dwarf hamsters, mice, gerbils & rats

Skin & coat are often neglected in check-ups of smaller rodents. Both are a reflection of health, though.

If applicable, natural components in nutrition can support or you can directly supplement the daily nutrition with Hair & SkinCare to even out nutrition-related imbalances.



- essential amino acids from sweet lupine & mung beans
- unsaturated fatty acids from flax & perilla seeds
- high percentage of millet containing silica
- added mealworms

### Ingredients:

Plata millet, Kamut®, oatkernel, pea flakes, quinoa seeds, mung beans (5%), silver millet, perilla seeds (4%), sweet lupin flakes (4%), red millet, linseed (2.5%), mealworms (2%), marigold blossoms (millet total 32%)

### Analytical constituents:

Crude protein 16% - crude oils and crude fats 6.5% - crude fibre 5% - crude ash 5%

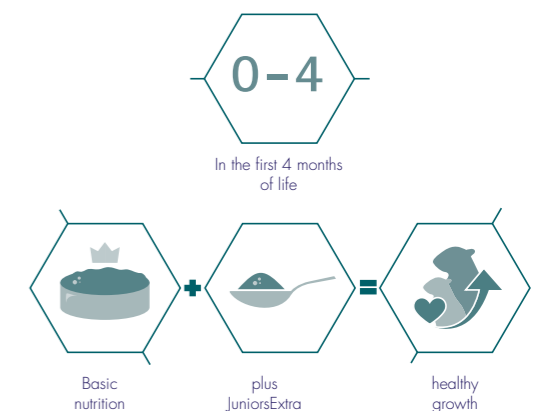


## JuniorsExtra

Supplementary food in the growth phase for hamsters, dwarf hamsters, gerbils, mice & rats

During the growth phase, albeit a very short one, the animals have an increased need. JuniorsExtra supports healthy growth through the valuable components.

- covers enhanced calcium & protein needs
- with valuable power seeds & mealworms
- add to the adult basic nutrition daily until the grow phase is completed



### Ingredients:

Quinoa, Kamut®, amaranth (puffed), mung beans, canary seed, perilla seeds, mealworms (2%), calcium carbonate, semolina bran (seeds 41%)

### Analytical constituents:

Crude protein 17% - crude oils and crude fats 6.5% - crude fibre 5% - crude ash 5.5% - calcium 0.7% - phosphorous 0.4%

### Additives per kg:

#### Nutritional additives

Vitamin A 9.000 IU - Vitamin D<sub>3</sub> 720 IU - Vitamin E / all rac-alpha-tocopherylacetate 81 mg - copper as copper (II)-sulphate, pentahydrate 4.7 mg - iodine as calcium iodate, waterfree 0.67 mg - iron as iron (II)-sulphate, monohydrat 45 mg - zinc as zinc oxide 58.5 mg - manganese as manganese (II)-oxide 31.5 mg - selenite as sodium selenite 0.13 mg

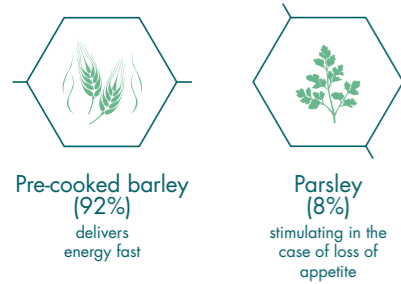


## PowerFlakes

Supplementary food for dwarf rabbits and rodents

### When does the feeding of PowerFlakes make sense?

E.g. in the case of loss of appetite and emaciation originating from diet and for small appetites.



**Ingredients:**  
Barley flakes (92%), parsley stems (8%)

120 g Art. No.: 12046 Bar Code: 4018761120468  
2.5 kg\* Art. No.: 12519 Bar Code: 4018761125197 \*own needs



## RiceFlakes

Supplementary food for dwarf rabbits and rodents

### Pre-cooked rice with carrots, leek & peas

Ideal for nutrition-related digestive problems as they arise.



**Ingredients:**  
Rice flakes (91%), pea flakes, carrot flakes, leek (vegetables 9%)

**Additives per kg:**  
Nutritional additives  
Vitamin A 6.000 IU · Vitamin D<sub>3</sub> 800 IU · Vitamin E / all rac-alpha-tocopherylacetate 40 mg · copper as copper (II)-sulphate, pentahydrate 7.2 mg · iodine as calcium iodate, waterfree 0,4 mg · iron as iron (II)-sulphate, monohydrat 45 mg · zinc as zinc oxide 43 mg · manganese as manganese (II)-oxide 19 mg · selenite as sodium-selenite 0.08 mg

120 g Art. No.: 12049 Bar Code: 4018761120499  
2.5 kg\* Art. No.: 12513 Bar Code: 4018761125135 \*own needs

## CareGel

for irritated skin & paws naturally gentle pet care with pine heartwood extract for dwarf rabbits & rodents

- Soothing and grooming for skin irritation including redness, scales and crust formation, injuries, bruising and itching
- Promotes new fur growth after fur loss.
- Easy application thanks to gel-like consistency, preferably on hairless parts of the body
- For best results apply thinly to the affected skin areas



**Ingredients:**  
Water, pine heartwood extract, citrus limon fruit water, xanthan gum, chondrus crispus powder, glyceryl caprylate, sodium phytate, glucose, glycerin, sodium hydroxide, levulinic acid, P-anisic acid, sodium levulinate, silver sulfate

100 ml Art. No.: 12030 Bar Code: 4018761120307

# CARE CareGel

Unfortunately, skin irritation is common. Everyone who has pets knows that. But what can you do? The CareGel uses the natural power of heart pine to help gently and effectively.

# SecureBunny

SIGNS proposes an innovative method for a continuous release of reassuring maternal message, an environmental friendly technology.

The diffuser block promotes a state of welfare and serenity that is opposed to stress and its various manifestations such as aggression, panic attacks, but also digestive disorders.

Finally, this pheromone promotes peaceful social relations with congeners and other species.

## Diffuser for well-being and security

SECURE BUNNY works in many areas:

- Anxious, stressed rabbits
- Holiday
- Veterinary examination / operations
- New partner
- Diseases generally
- Move
- Transport
- General changes

Counter display available in 2 motives!



#### Anwendung:

Place the opened SecureBunny can free-standing in the area where the rabbits are staying - as high as possible and out of reach of children and animals. Do not ingest.  
Air purifier can reduce the effectiveness, however it is advice to set the air purifier to low or automatic mode.

250 g	Art. No.: 12070	Bar Code: 4018761120703
250 g*	Art. No.: 12071	Bar Code: 4018761120710 *own needs
4x250 g*	Art. No.: 12072	Bar Code: 4018761120727



A snack at the right time is the perfect addition to the diet, but it is important not to lose sight of what your pet would naturally eat. Snacks do not need to contain sugar, honey or other flavourings. A fine selection of high-quality components that both taste great and are healthy is a much more fantastic option.



# SNACKS



# Enjoy Nature

Enjoy Nature? Of course! Anyone who thinks that varied and tasty snacks have to include added sugar, honey or other components has obviously never tried our fantastic products.

Enjoy Nature represents a pure, natural taste through and through. The wide variety of types will excite both pets and owners. Who wouldn't want to give their pet a health treat from time to time...

**100% natural**

- no sugar
- no additives
- no flavour enhancers
- no preservatives
- no colourings



## FOR DWARF RABBITS & RODENTS



**Nibble Fun**  
Apple wood

Apple wood provides fantastic nibble fun for your pets. It keeps your pets busy while providing dental care - two good reasons to treat your pet with this snack.  
**Analytical constituents:** Crude fibre 40%

220 g Art. No.: 18138 Bar Code: 4018761181384



**Nibble Fun**  
Pear wood

The name says it all: The untreated pear woods are the ultimate nibbling and chewing delight for your pets and make for a delicious alternative, while also keeping them occupied and providing natural dental care in one.  
**Analytical constituents:** Crude fibre 40%

200 g Art. No.: 15130 Bar Code: 4018761151301



**Prebiotic-Snack**  
Sunchoke stems

Inulin has an exceptionally positive effect on intestinal flora. And it's found in large quantities in sunchoke. Snacking with positive health effects - that's the main factor here.  
**Analytical constituents:** Crude fibre 16%

35 g Art. No.: 18087 Bar Code: 4018761180875



**Piccolinis**  
with veggies

Pic-Pic-Piccolinis!! If animals could talk, they would order Piccolinis. They have got the right size for in between. They consist of vitamin-rich vegetables and just taste great.  
**Ingredients:** Parsnips, carrots, peas, carob flour (vegetables 96%)

90 g Art. No.: 18491 Bar Code: 4018761184910



**Natural Bits**  
Dandelion roots

Dandelion root is not only great for nibble activity, it is highly nutritious, too. In addition to bitters, amino acids, minerals, and trace elements like copper and zinc, it is also rich in vitamin B, C and E. Only the best quality for your pet.  
**Analytical constituents:** Crude fibre 5%

150 g Art. No.: 18136 Bar Code: 4018761181360



**Favourite Veggies**  
with pumpkin

This is a wonderful mixture of all types of vegetables that animals love. Delicious pumpkin gives it a special flavour. By the way, this mix also has a particularly positive effect on the well-being of animals.  
**Ingredients:** Parsnips, chicory root, sweet pepper, pumpkin (15%), broccoli, parsley stems

50 g Art. No.: 18067 Bar Code: 4018761180677



**Vitamin Pack**  
Veggie mix with beets

Vitamins are essential. And pets get an extra portion with this mixture! The beets are especially valuable here because of their high vitamin B content.  
**Ingredients:** Beetroot (20%), celery, carrots, parsley root, courgette, tomato

50 g Art. No.: 18063 Bar Code: 4018761180639

## FOR HAMSTERS, DWARF HAMSTERS, MICE, GERBILS & RATS



There's power in here! This seed mixture provides high-quality protein - thanks mainly to the buckwheat. And the delicious meal worms of course. Your pets will be licking their paws for this mix.

**Ingredients:** Buckwheat, kardi seed, rice flakes, beetroot, mung beans, sesame, mealworms (3%), milk thistle herb, rose blossoms, hibiscus blossoms, marigold blossoms

80 g Art. No.: 18295 Bar Code: 4018761182954



Doing it right. We kept this in mind when making this mixture. An unbelievable 13 natural components can be found in this bag. Delicious and healthy! No pet can resist it.

**Ingredients:** Oat flakes, kardi seed, carrots, parsnips, mealworms, dandelion herb, lucerne, yarrow herb, ribwort, beetroot, marigold blossoms, camomile blossoms, rose blossoms

75 g Art. No.: 18303 Bar Code: 4018761183036



The nut makes the difference! And gives this high-quality seed-veggie-blossom mix a nutty flavour. The hazelnut is not only well loved, but is also highly nutritious (with vitamins and protein, for example).

**Ingredients:** Kardi seed, rice flakes, hemp seed, oat flakes, parsnips, carrots, hazelnut (5%), beetroot, mealworms, rose blossoms, marigold blossoms (seeds 70%)

80 g Art. No.: 18299 Bar Code: 4018761182992



Hamster and friends - The nibble party can begin with an extra portion of mealworms and vitamin-rich vegetables.

**Ingredients:** Sesame, buckwheat, parsnips, carrots, mung beans, carob flour, mealworms (2%) (vegetables 40%)

75 g Art. No.: 18487 Bar Code: 4018761184873



You can actually see the worms in here. In particular the mealworms are much loved by all granivores. Delicious!

**Analytical constituents:** Crude protein 52% - crude oils and crude fats 32%

35 g Art. No.: 18307 Bar Code: 4018761183074

## FOR DWARF RABBITS, GUINEA PIGS, CHINCHILLAS & DEGUS



16 different green plants - high in crude fibre with coarse structure and an extra portion of dandelion. Especially suitable for pets/pet owners with allergies to hay.

**Ingredients:** Ryegrass, meadow foxtail, meadow fescue, tall oat grass, red fescue, blue grass, timothy, bentgrass, dandelion leaves (at least 4%), silverweed, chickweed, yarrow herb, ribwort, white clover, red clover, birdsfoot trefoil

The herbal composition is subject to natural fluctuations.

**Analytical constituents:** Crude protein 12% - crude fibre 22%

450 g Art. No.: 18140 Bar Code: 4018761181407



Animals that find such a large diversity of natural ingredients in their dish are happy indeed. Vegetables that are rich in vitamins, delicate blossoms and leaves are the highlight here.

**Ingredients:** Carrots, parsley root, chicory root, celery, rosehip peel, birch leaves, cornflower blossoms, marigold blossoms, currant leaves, cowslip, rose blossoms (vegetables 87%, blossoms 7%, leaves 6%)

35 g Art. No.: 18011 bar code: 4018761180110



A favourite Bunny snack! A colourful mixture of delicious fruit. Perfect as a snack for in-between.

**Ingredients:** Raisins, pears, apples, apricots, bananas (7%), elderberries, cotton-seed oil, rice flour

100 g Art. No.: 18243 Bar Code: 4018761182435



# My little Sweetheart

They look so cute and are called My little Sweetheart. The name speaks for itself, because the small heart-shaped biscuits will immediately win over the small pets, as well as their owners. The striking packaging design which shows off the heart-shaped biscuits excellently will turn these products into something special in every sense.

You have to watch out because My little Sweetheart will be gobbled up in a flash - all small mammals love them that much. You can choose from seven flavours. There is something for every animal. This biscuit recipe also includes the valuable inulin contained also in the popular Crunchy Cracker.

My little Sweetheart are especially suitable for feeding small pets directly from your hand because of their size. This is why they are ideal for helping relatively shy animals to become accustomed to being stroked.



## Dandelion

Supplementary food for DWARF RABBITS & RODENTS



So cute... this adorable dandelion biscuit! A great taste explosion for our little darlings too! Perfect for a little snack or ideal as a reward.

**Ingredients:** Spelt, oat bran, rice, fruit pomace, dandelion (5%), oat peel bran, lignocellulose, calcium carbonate, chicory powder (0.5% inulin)

30 g Art. No.: 11700 Bar Code: 4018761117000



## Anis-Fennel

Supplementary food for DWARF RABBITS & RODENTS



What a fantastic taste combination: Aniseed and fennel! A snack that is very popular for everyone and will be gobbled up on the spot. A big treat as a reward or snack for in between!

**Ingredients:** Spelt, oat bran, rice, fruit pomace, oat peel bran, lignocellulose, anise (1.5%), fennel (1.5%), calcium carbonate, chicory powder (0.5% inulin)

30 g Art. No.: 11701 4018761117017



## Red berries

Supplementary food for DWARF RABBITS, GUINEA PIGS, CHINCHILLAS, HAMSTERS, MICE, GERBILS & RATS



A real treat! A varied mixture of valuable forest fruits with a unique flavour. Snacks for in between have never tasted better.

**Ingredients:** Spelt, oat bran, rice, fruit pomace, oat peel bran, lignocellulose, rosehip peel (2%), elderberries (1%), hibiscus blossoms (1%), calcium carbonate, chicory powder (0.5% inulin)

30 g Art. No.: 11702 Bar Code: 4018761117024



## Mealworm

Supplementary food for HAMSTERS, DWARF HAMSTERS, MICE, GERBILS & RATS



One thing is clear: Mealworms are a real highlight! Our little darlings absolutely love them and downright grab them out of our hands. My little Sweetheart Mealworm is the ideal snack size for hamsters etc.

**Ingredients:** Spelt, oat bran, rice, fruit pomace, oat peel bran, lignocellulose, mealworms (1%), calcium carbonate, chicory powder (0.5% inulin)

30 g Art. No.: 11703 Bar Code: 4018761117031







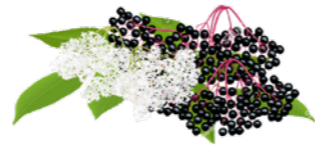
## Thyme

Supplementary food for  
DWARF RABBITS  
& RODENTS



## Peppermint

Supplementary food for  
DWARF RABBITS  
& RODENTS



## Elderberry

Supplementary food for  
DWARF RABBITS,  
GUINEA PIGS,  
CHINCHILLAS,  
HAMSTERS, MICE,  
GERBILS & RATS



Thyme is a very well-known herb. It is a true all-rounder - said to have positive influence on the digestion - and it has a characteristic taste. Thyme has a spicy taste and is mellow at the same time, sometimes even sweet. Unsurprisingly, animals love this cookie especially.

**Ingredients:** Spelt, oat bran, rice, fruit pomace, oat peel bran, lignocellulose, thyme (1.5%), calcium carbonate, chicory powder (0.5% inulin)



Fresh and tasty, that's what our furry darlings love. The peppermint gives a unique taste and quickly makes this cookie a favourite. Peppermint does not only taste good, it also has many positive characteristics due to the essential oils. Fantastic!

**Ingredients:** Spelt, oat bran, rice, fruit pomace, oat peel bran, lignocellulose, peppermint (1.5%), calcium carbonate, chicory powder (0.5% inulin)



These heart-shaped cookies offer everything taste-wise: Berry, tart-sweet... Just the way many animals like it. In general, elderberry is high in provitamin A and B vitamins. All in all, a berry good snack.

**Ingredients:** Spelt, oat bran, rice, fruit pomace, oat peel bran, lignocellulose, elderberries (2%), hibiscus blossoms, calcium carbonate, chicory powder (0.5% inulin)



# Crunchy Cracker

**FREE FROM  
ADDED SUGAR,  
PRESERVATIVES  
& COLOURINGS**

Crunchy Cracker contain valuable inulin. It effectively provides the regulation of blood sugar level and stabilises the intestinal flora. It taste special and it is also an eye-catcher on the shelf.



**BEETROOT**

Supplementary food for  
DWARF RABBITS  
& RODENTS



**CARROTS**

Supplementary food for  
DWARF RABBITS  
& RODENTS



**PARSLEY**

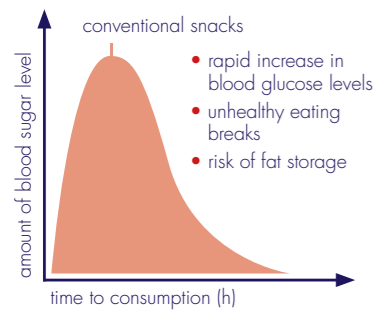
Supplementary food for  
DWARF RABBITS  
& RODENTS



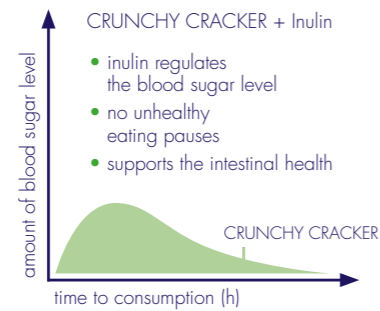
**HERBS**

Supplementary food for  
DWARF RABBITS  
& RODENTS

## THE PROBLEM



## THE SOLUTION ...



The Crunchy Cracker with a mildly earthy and spicy flavour. A combination our animal friends love!

**Ingredients:** Spelt, oat bran, rice, beetroot (12%), fruit pomace, oat peel bran, lignocellulose, calcium carbonate, chicory powder. (0.5% inulin)



Distinctive in taste and incredibly popular: the carrot. Now in combination with a Crunchy Cracker. It really excites our animal friends!

**Ingredients:** Spelt, oat bran, rice, fruit pomace, carrot (7%), oat peel bran, lignocellulose, beetroot, calcium carbonate, chicory powder (0.5% inulin)



What has mildly spicy taste and is crunchy? Exactly: Crunchy Cracker - Parsley. For the ultimate variety in your pet's feeding bowl.

**Ingredients:** Spelt, oat bran, rice, parsley (10%), fruit pomace, oat peel bran, lignocellulose, calcium carbonate, chicory powder (0.5% inulin)



With a delicious herb flavour and crunchy, too. Exactly what a snack should be!

**Ingredients:** Spelt, oat bran, rice, fruit pomace, oat peel bran, lignocellulose, thyme, rosemary, balm, peppermint leaves, calcium carbonate, chicory powder (0.5% inulin) (Herbs 6%)

**KEKS MIT BISS  
CRUNCHY CRACKER**

FREE FROM  
ADDED SUGAR,  
PRESERVATIVES  
& COLOURINGS



FRUITS

Supplementary food for  
DWARF RABBITS,  
GUINEA PIGS,  
CHINCHILLAS,  
HAMSTERS, MICE,  
GERBILS & RATS



APPLE

Supplementary food for  
DWARF RABBITS,  
GUINEA PIGS,  
CHINCHILLAS,  
HAMSTERS, MICE,  
GERBILS & RATS



BANANA

Supplementary food for  
DWARF RABBITS,  
GUINEA PIGS,  
CHINCHILLAS,  
HAMSTERS, MICE,  
GERBILS & RATS



QUINOA & AMARANTH

Supplementary food for  
DWARF RABBITS  
& RODENTS



HEMP

Supplementary food for  
DWARF RABBITS  
& RODENTS



SPIRULINA

Supplementary food for  
DWARF RABBITS  
& RODENTS



It's the exquisite selection of fruits that does it! A favourite Crunchy Cracker which makes them want more.

**Ingredients:** Spelt, oat bran, rice, fruit pomace, oat peel bran, lignocellulose, hawthorn berries, blackthorn berries, rosehip peel, orange peel, hibiscus blossoms, calcium carbonate, elderberries, anis, chicory powder (0.5% inulin) (Fruits 8%)



Many animals already love the apple due to its fine taste. Now the love it even more thanks to the Crunchy Cracker!

**Ingredients:** Spelt, oat bran, rice, fruit pomace, apples (5%), oat peel bran, lignocellulose, calcium carbonate, chicory powder (0.5% inulin)



This sets the pulse racing! The fine sweet taste of banana combined with the crunchy cracker. If that is not even the highlight.

**Ingredients:** Spelt, oat bran, rice, fruit pomace, oat peel bran, lignocellulose, bananas (2%), calcium carbonate, chicory powder (0.5% inulin)



This cookie unites two superfood components: quinoa and amaranth! They are very tasty and rich in essential amino acids. Because of many easily digestible nutrients, these cookies are especially valuable.

**Ingredients:** Spelt, oat bran, rice, fruit pomace, chokeberry pomace (4%), oat peel bran, lignocellulose, quinoa (1%), amaranth (1%), calcium carbonate, chicory powder (0.5% inulin)



Many relevant characteristics are ascribed to hemp. It is notable that hemp protein - used here - provides highly valuable protein and amino acids. The special feature of these cookies: Great taste, high acceptance and snacking without any regrets!

**Ingredients:** Spelt, oat bran, rice, fruit pomace, oat peel bran, lignocellulose, hemp protein (1.5%), calcium carbonate, chicory powder (0.5% inulin)



Spirulina is a true allrounder: Rich in nutrients, positive influence on the metabolism, high in enzymes, amino acids, vitamins, antioxidants and so much more is attributed to spirulina. It is clear for our cookie: Fantastic taste of spirulina cookie to round of nutrition positively.

**Ingredients:** Spelt, oat bran, rice, fruit pomace, oat peel bran, lignocellulose, spirulina (1.5%), calcium carbonate, chicory powder (0.5% inulin)

# INTERACTIVE



Around 80% of small mammals kept as pets suffer from boredom! That is terrible. And yet it is so easy to keep an animal busy. It makes them much more balanced and trusting. The bond between the owner and pet is strengthened enormously... and everyone is happy. So how? The bunnyInteractive product concept can help.



THOSE WHO LOVE THEIR PETS ARE HAPPY.

AND PETS ARE HAPPY WHEN THEY ARE LOVED, FED AND KEPT IN A SPECIES-APPROPRIATE WAY, AND KEPT BUSY.

Many small mammals kept as pets suffer from boredom. They are under-stimulated and simply not kept busy. Yet in the nature they are very active, such as in looking for food – this can often take up a lot of time and may even be particularly difficult at certain times of year. The animals use a lot of senses here, many of which go to waste today.

Animals that are bored display behavioural problems such as

- fur licking
- aggression
- lack of trust
- pacing

The bunnyInteractive concept offers an opportunity

- to intensify the bond between the pet and owner
- to make the pet happier and better balanced, so that living together becomes more attractive

Using the bunnyInteractive products properly has the following benefits:

- strengthening the bond
- providing variety
- improving trust
- mental and physical stimulation
- reducing stress and fear
- enhancing intelligence

Most owners are interested in keeping their pets busy, but often do not know how. The products in the bunnyInteractive range offer owners lots of options:

### LEVEL 1 PRODUCTS

The owner is not actively involved; the pets are kept busy with useful accessories.



- Back to the ROOTS
- Hay Active-Snack
- DiggingBox

### LEVEL 2 PRODUCTS

The owner is actively involved. For example, he might hide treats in the Snufflemat, observe the activity and thus increase contact with his small mammal. The Level 2 products are generally used under supervision.



- Snufflemat

### LEVEL 3 PRODUCTS

The owner is involved extremely actively. The connection with his animals is intensified as far as possible, e.g. through the teaching of useful tricks.



- Crispy Snack
- Training Cards

The product portfolio includes options for every owner and demand, including advanced options for intensifying the bond between pet and owner.

# DiggingBox

Dig, dig, dig – that is a rabbit’s favourite and most natural occupation!

And that is exactly what they do in our spacious DiggingBox! Here they can pursue their natural behaviour to their hearts’ desire and simply “be rabbits” – without getting the whole area dirty. The DiggingBox is suitable for all small mammals that particularly love to dig and scabble.

**It is immediately clear to see:**  
The DiggingBox is the dwarf rabbits’ new favourite place!

DiggingBox  
for ultimate digging fun

for DWARF RABBITS  
& RODENTS

## DIGGINGBOX



The DiggingBox is made from birch wood and its simple slot assembly system means that it is assembled in seconds. The dimensions – 50 x 39 x 19.5 cm – were chosen to allow your pet to dig away to its heart’s content without getting the surroundings dirty, but also to allow the box to be placed inside the cage at times.

50 x 39 x 19.5 cm Art. No.: 17018 Bar Code: 4018761170180

# DiggingFun

DiggingFun  
Sand-Mix

For DWARF RABBITS  
& RODENTS  
that love to dig

Simply tip the DiggingFun Sand-Mix from bunnyNature into the DiggingBox and off your pet can go – he will have plenty to do. Your pet will roll around to maintain his coat or diligently push the sand from one corner to another to create a comfortable hollow to relax in.

## DIGGINGFUN

### SAND-MIX



The ideal Sand-Mix for lots of digging fun for your pet. Its texture and low residual moisture make it the very best for digging fun. bunny tested and recommended by dwarf rabbits, it meets the highest quality standards.

9.7 kg Art. No.: 17019 Bar Code: 4018761170197

# Snufflemat

## SEARCH - PLAY - SNACK

Things you find yourself taste twice as good and are more fun too! Sniffing and searching for food is a natural behaviour that gets our small mammals' noses working overtime. But it takes concentration, too! With our Snufflemats, the search is truly exciting and keeps dwarf rabbits and other rodents usefully busy. Boredom becomes a thing of the past. And the best thing is that spending intensive time with your pet strengthens the bond and enhances mutual trust! Your pets will be relaxed, happy and well-balanced.

## Snufflemat Interactive foraging fun!

for DWARF RABBITS  
& RODENTS

### Snufflemat

Hay & Hemp



Felt



### PLAY & CHILL

31.5 x 28 cm	Hay & Hemp Snufflemat	Art. No.: 17020	Bar Code: 4018761170203
15 x 28 cm	Felt Snufflemat (red-gray)	Art. No.: 17021	Bar Code: 4018761170210
15 x 28 cm	Felt Snufflemat (green-gray)	Art. No.: 17022	Bar Code: 4018761170227
15 x 28 cm	Felt Snufflemat (purple/yellow)	Art. No.: 17028	Bar Code: 4018761170289
15 x 28 cm	Felt Snufflemat (turquoise/pink)	Art. No.: 17029	Bar Code: 4018761170296
17 x 29,5 cm	play & chill	Art. No.: 17025	Bar Code: 4018761170258

# Back to the ROOTS

## Back to the ROOTS Nibbling root fun

for DWARF RABBITS  
& RODENTS

### Back to the ROOTS NIBBLING ROOT FUN



- 100% natural heather roots
- extremely long-lasting gnawing fun through constant chipping off
- provides variety and promotes natural behaviour
- easy to use

XS 60-130 g	Art. No.: 17011	Bar Code: 4018761170111
S 140-200 g	Art. No.: 17012	Bar Code: 4018761170128
130-140 g*	Art. No.: 17016	Bar Code: 4018761170166

\*own needs

Back to the roots - the nibbling roots are made of 100% natural heather roots and provide a long-lasting treat to nibble whilst constantly nibbling off small pieces. The animals can follow their natural instinct to gnaw, they will enjoy and are kept busy. Gnawing also promotes the abrasion of the teeth and dental care. Just place the gnawing root in the enclosure and that's all you need to do! You can also fasten the gnawing root with the twine at the cage rails - there are also two holes in the gnawing root for this purpose. Available in two sizes... perfect for all small mammals!

# Coffeewood

An exciting activity and a natural nibble treat in one! Unique coffee wood is ideal for keeping dwarf rabbits and rodent busy nibbling whilst having a lot of fun. Animals follow their natural gnawing instinct and gnaw at the coffee wood with great perseverance, which demands their concentration and ultimately results in their satisfaction.

## COFFEWOOD Coffeewood nibble treat

for DWARF RABBITS  
& RODENTS



Coffeewood nibble treat



AN EXCITING ACTIVITY  
AND A NATURAL NIBBLE TREAT  
IN ONE!

- 100% natural
- from sustainable coffeewood
- long lasting treat
- unique, natural shape

Art. No.: 17027

Bar Code: 4018761170272

# Coffeewood STICKS

## COFFEWOOD STICKS Coffeewood nibble treat

for DWARF RABBITS  
& RODENTS



Coffeewood nibble treat



AN EXCITING ACTIVITY  
AND A NATURAL NIBBLE TREAT  
IN ONE!

- 100% natural
- from sustainable coffeewood
- long lasting treat
- unique, natural shape

Art. No.: 17054

Bar Code: 4018761170548

Natural snacking made from coffee-wood and enrichment all in one for happy pets. Just place the Coffeewood Stick in the hutch and the nibbling fun can begin!



# Hay Active-Snack

The exciting snack hunt to hang in the cage: simply pull a little hay out of the slits and the search can begin. An exciting snack hunt game that occupies your pet both mentally and physically. For happy pets.



**Hay**  
**ACTIVE-SNACK**



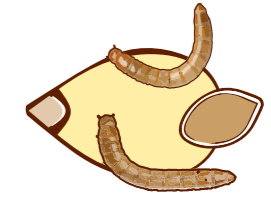
## Favourite Veggies

Mixed food for  
DWARF RABBITS  
& RODENTS



## Garden Joy

Mixed food for  
DWARF RABBITS  
& RODENTS



## The wild 13

Mixed food for  
HAMSTERS,  
DWARF HAMSTERS,  
GERBILS, MICE & RATS



In this Hay Active-Snack, fantastic vegetable varieties have been hidden and are just waiting to be found and eaten. As well as the healthy hay, the dried vegetables are a search highlight your pets will love.

**Ingredients:** Hay, parsnips, chicory root, sweet pepper, pumpkin, broccoli, parsley stems (vegetables 20%)

30 g Art. No.: 17030 Bar Code: 4018761170302



Your pet is happy when it can sniff, search and find – especially when its reward is tasty components like cornflower blossoms, celery, rosehip shells and much more.

**Ingredients:** Hay, carrots, parsley root, chicory root, celery, rosehip peel, birch leaves, cornflower blossoms, marigold blossoms, currant leaves, cowslip, rose blossoms

30 g Art. No.: 17031 Bar Code: 4018761170319



Hamsters etc. are sure to go wild – wild on the hunt for mealworms, cardy seed, oat seeds and 10 more incredible treats. It's fun, it tastes good and it keeps your pet interested.

**Ingredients:** Hay, oat flakes, kardi seed, carrots, parsnips, mealworms, dandelion herb, lucerne, yarrow herb, ribwort, beetroot, marigold blossoms, camomile blossoms, rose blossoms

30 g Art. No.: 17032 Bar Code: 4018761170326

# Crispy Snack

The right training snack is crucial to success. It needs to taste like a real jackpot... not just everyday food, and easy to chew and swallow. Our new training snacks are ideal.

Small, light and crispy, the Crispy Snacks are delicious and quick to eat. That makes them the ideal reward, for example during clicker training.



## Vegetables

Supplementary food for DWARF RABBITS & RODENTS



The snack is not the only thing that's crunchy – the vegetables are too. And as an added bonus, the vegetables provide an extra health kick with natural vitamins.

NO

- sugar additives
- flavour enhancers
- preservatives
- flavourings

Ingredients: Corn, peas, lucerne (vegetables 40%)

30g Art. No.: 17040 Bar Code: 4018761170401



## Carrots

Supplementary food for DWARF RABBITS & RODENTS



Carrots? Of course... now in our deliciously Crispy Snack, too.

NO

- sugar additives
- flavour enhancers
- preservatives
- flavourings

Ingredients: Corn, carrots (35%), sunflower oil

25g Art. No.: 17041 Bar Code: 4018761170418



## Beetroot

Supplementary food for DWARF RABBITS & RODENTS



Beetroot is not only one of the healthiest types of vegetables there is – animals also love the taste. That makes it the perfect choice for a training snack that feels like winning the jackpot.

NO

- sugar additives
- flavour enhancers
- preservatives
- flavourings

Ingredients: Corn, beetroot (5%), sunflower oil

50g Art. No.: 17042 Bar Code: 4018761170425

## Training cards Beginner

for DWARF RABBITS & RODENTS



Why use a clicker, and how does it work? The basics of clicker use are explained clearly and simply, alongside six tricks. That your pet will learn great tricks is all but guaranteed.

- basics
- trick cards
- FAQ

14 Cards Art. No.: 17048 Bar Code: 4018761170487



# BEDDING & CAGECARE

Small mammals spend all day long on one type of bedding, so making the right choice is crucial to keep your pet happy and healthy. The bunny-Bedding range offers a selection of different bedding types, designed with both pet-related aspects and owner preferences in mind.



# Bedding

A selection of eight different bedding types provides everything pets and their owners could want. Everyone can choose the ideal bedding/ bedding combination for himself and his pet.



## Active

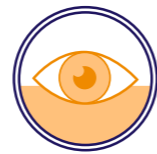
PLANT FIBRE MIX - NATURAL BEDDING  
for hamsters, dwarf hamsters, mice, gerbils & rats



promotes natural behaviour, ensures activity



stable tunnels and passageways



great observation opportunities



very good absorbency



super-soft for paws



low in dust, gentle on respiratory systems

bunnyBedding Active combines many outstanding product features in one: it is fantastically absorbent, super soft for little paws, ideal for stable tunnel-building and much more. Please provide a particularly thick layer of bedding in order to give your pets a natural adventure playground, so that they feel at home and can move around as their natural instincts tell them.

Ingredients: Linen fibre, straw pellets, pine heartwood

12.5 Liter Art. No.: 16038 Bar Code: 4018761160389  
35 Liter Art. No.: 16030 Bar Code: 4018761160303  
70 Liter\* Art. No.: 16031 Bar Code: 4018761160310 \*own needs



## Comfort

RELAX - NATURAL BEDDING  
for dwarf rabbits & rodents



encourages natural behaviour, ensures activity



stays dry & fresh extra long when combined with Absorber bedding base



tender & soft, ensures immediate well-being



low in dust, gentle on respiratory systems



biodegradable

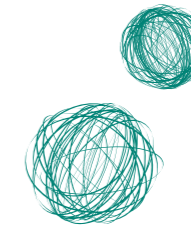


good absorbency

bunnyBedding Comfort is the ideal bedding for your pets to feel as comfortable as possible. The wonderfully soft surface of the bedding invites them to relax right away. Thanks to its natural texture, the Relax natural bedding encourages the animals' natural behaviour, such as digging and scrabbling, keeping them occupied. The Relax natural bedding is ideal combined with the bunnyBedding Absorber (as bottom-bedding with maximum absorbency). This dream combination offers pets and their owners the ideal indoor atmosphere and the driest bedding for weeks.

Ingredients: Beech wood granules, hemp fibre, linen fibre

20 Liter Art. No.: 16040 Bar Code: 4018761160402  
70 Liter\* Art. No.: 16041 Bar Code: 4018761160419 \*own needs



## Absorber

BEDDING BASE WITH MAXIMUM ABSORBENCY  
for dwarf rabbits & rodents



Bedding base for optimum moisture absorption, suitable for all bedding types



Turbo absorbency - permanent dry



dependable odour absorption



low in dust, gentle on respiratory systems



fast, easy cleaning



biodegradable

bunnyBedding Absorber is the ideal bottom bedding with maximum absorbency. The Absorber lives up to its name, with a high absorbent capacity and neutralising odours reliably. Combined with bunnyBedding Comfort or another type of bedding from the bunnyBedding range, the Absorber is the ideal bedding partner for creating a pleasant indoor atmosphere permanently and ensuring the driest bedding for weeks.

Ingredients: Straw pellets, soft wood granules, pine heartwood

12.5 Liter Art. No.: 16054 Bar Code: 4018761160549  
20 Liter Art. No.: 16050 Bar Code: 4018761160501  
70 Liter Art. No.: 16051 Bar Code: 4018761160518 \*own needs



## Cosy

NATURAL STRAW LITTER  
for dwarf rabbits & rodents



turbo absorbency - permanent dry on the surface



natural odour stopper - pleasant indoor climate



super-soft for paws



economical



fast, easy cleaning



biodegradable

bunnyBedding Cosy is the super-soft natural straw bedding for rabbits and rodents. It traps moisture and odours immediately, while its high absorbency makes it especially economical. bunnyBedding Cosy offers pets a soft base for lying and moving around, and is gentle on their sensitive hind legs. It is also low in dust, making it especially pleasant for both pets and their owners.

20 Liter Art. No.: 16060 Bar Code: 4018761160600  
60 Liter Art. No.: 16061 Bar Code: 4018761160617  
60 Liter\* Art. No.: 16062 Bar Code: 4018761160624

\*own needs



## Linum

ORIGINAL NATURAL LINEN LITTER  
for dwarf rabbits & rodents



super-soft for paws



low in dust, gentle on respiratory systems



good absorbency



purified 5 times



economical



biodegradable

bunnyBedding Linum is a natural linen bedding. It offers your pets maximum comfort straight away and gives them a dry, comfortable surface for lying and moving around. Depending on the size of the cage and the number of animals, bunnyBedding Linum stays dry for up to 14 days and captures ammonia reliably.

12.5 Liter Art. No.: 16070 Bar Code: 4018761160709  
35 Liter Art. No.: 16071 Bar Code: 4018761160716  
20 kg\* Art. No.: 16072 Bar Code: 4018761160723

\*own needs



## Hanf

ORIGINAL HEMP NATURAL BEDDING  
for dwarf rabbits & rodents



good absorption



varied straw length and texture for maximum comfort



feathery soft surface for safe walking that is gentle on joints



cleaned and low-dust



renewable raw material



biodegradable

Hemp fibre is a traditional, fast-growing crop. A loose layer of bunnyBedding Hanf provides a dry, pleasantly soft surface for walking and lying, especially for sensitive pets. It has a high yield and is kind to skin and fur.

35 Liter Art. No.: 16020 Bar Code: 4018761160204  
90 Liter Art. No.: 16027 Bar Code: 4018761160273  
20 kg\* Art. No.: 16021 Bar Code: 4018761160211

\*own needs



## Cotton

NATURAL COTTON BEDDING  
for dwarf rabbits & rodents



traps moisture & odours



ideal for nest building



soft surface for walking



low in dust, gentle on respiratory systems



renewable raw material



biodegradable

bunnyBedding Cotton is made by removing the cotton fibres stuck to the cotton seeds. These natural fibres are especially soft, warm and good at trapping moisture. bunnyBedding Cotton can be used alone or in combination with other bunnyBedding products. Combined use is especially popular with small mammals and provides plenty of activities for them, such as lining the nest or building tunnels.

20 Liter Art. No.: 16002 Bar Code: 4018761160020  
40 Liter Art. No.: 16000 Bar Code: 4018761160006  
40 Liter\* Art. No.: 16001 Bar Code: 4018761160013

\*own needs



## UltraDry

ORIGINAL SPELT NATURAL BEDDING  
for dwarf rabbits & rodents



## Fresh & Dry

SPELT MIX  
for dwarf rabbits & rodents



turbo absorbency  
permanent dry  
on the surface



excellent  
ammonia  
binding



thermal  
sterilisation  
suitable for those  
sensitive to allergies



naturally fresh  
pine heartwood  
& apple wood



turbo absorbency  
permanent dry  
on the surface



tender & soft  
ensures immediate  
well-being



economical



tender & soft  
ensures immediate  
well-being



renewable  
raw material



economical



renewable  
raw material



biodegradable

The new bunnyBedding UltraDry is made from premium spelt, which has been specially conditioned for the comfort of your pets. bunnyBedding UltraDry is highly absorbent and delightfully soft.

Ingredients: Spelt

This unique bedding consists of four precious components, which have been specially combined thanks to their wonderful properties. As a result, a variety of product features such as excellent absorbency, fast ammonia binding and natural freshness can be ensured.

Ingredients: Spelt, linen, applewood, pine heartwood



10,5 Liter Art. No.: 16122 Bar Code: 4018761161225  
29 Liter Art. No.: 16120 Bar Code: 4018761161201  
60 Liter\* Art. No.: 16121 Bar Code: 4018761161218 \*own needs

10,5 Liter Art. No.: 16132 Bar Code: 4018761161324  
29 Liter Art. No.: 16130 Bar Code: 4018761161300

# Easy

Just place in the cage, followed by the other accessories. Done. No further bedding is needed.

## THE ABSORBENT BEDDING MAT for dwarf rabbits & rodents

- Dust free! Ideal for allergy sufferers
- Paws stay dry
- when the animals are in an outdoor enclosure / are running free in a residence or in the transport box
- as a base when caring for the animals, for example during brushing and cutting of claws
- Cage quick and easy to clean, surroundings remain clean
- Washable at 60°



- suitable for tapered standard cages 1.20 x 0.60 m

### EASY XL

- as a base for the free running cage
- 1.40 x 1.40 m



### EASY MINI



Small format – versatile, e.g. Nap Time Bed, transport boxes etc.

- 0.48 x 0.28 m



bunnyBedding Easy consists of soft, fluffy fleece and extra-absorbent Molton. This unique combination means that urine passes through the fleece extremely quick and is caught and held by the Molton. Guinea pigs etc. always have dry feet and cannot slip on the mat, so they can run around without a care. The product also makes the cage extremely easy to clean, as there is no need to carry, store or dispose of bedding. Another great feature is that Bedding Easy is dust-free, making it ideal for allergy sufferers.

pink	1.12 x 0.51 m	Art. No.: 16080	Bar Code: 4018761160808
turquoise	1.12 x 0.51 m	Art. No.: 16081	Bar Code: 4018761160815
XL	1.40 x 1.40 m	Art. No.: 16084	Bar Code: 4018761160846
MINI	0.48 x 0.28 m	Art. No.: 16085	Bar Code: 4018761160853

# Care Natural

## Cage care

made from pine heartwood extract

Pine heartwood extract to clean cages.



Care Natural is completely natural and made from pine heartwood extract. The natural body's defense of the heart pine ensures a very gentle cleaning of cages. This is especially beneficial for the sensitive areas around the eyes and noses of small mammals. It also gives off a pleasantly fresh and natural aroma. care natural is all you need for many cleaning jobs. The 100 ml size is perfectly suitable if you just want to try out the product. The 500 ml bottle is very popular because of its outstanding price-performance ratio. The best place for care natural is directly next to the bedding for example.

Ingredients: Water, pine heartwood extract

100 ml	Art. No.: 16100	Bar Code: 4018761161003
500 ml	Art. No.: 16101	Bar Code: 4018761161010
500 ml*	Art. No.: 16102	Bar Code: 4018761161027
10 l*	Art. No.: 16103	Bar Code: 4018761161034

\*own needs

\*own needs

## LET'S CELEBRATE THE NEW WAY OF LIVING TOGETHER

The right accessories for modern animal husbandry!

Today's animal keeper has different demands on modern animal husbandry. The animals are family members and are often the focus of their own lives. For many pet owners, old-fashioned, small-scale dwellings are the past. Rather, it is essential to create living spaces that integrate wonderfully into the personal living environment. With the @Home category, we have committed ourselves to this principle - to create common comfort spaces for the animals with

their owners. This resulted in the wonderful cooperation and brand bunnyNature by puppijames. bunnyNature by puppijames shows what living with animals can look like today. Conceptually mature products of the best quality, which in addition to functionality also have an ambient character.

This is how living with animals works today!  
MODERN. INDIVIDUALLY. ANIMAL APPROPRIATE.



**bunny**  
NATURE  
by puppijames



# by puppijames

Now the labyrinth fun can finally begin! Assemble the interactive labyrinth in just a few minutes, and our curious, cute, little darlings can enjoy exploring their new environment. Here they can jump, climb, run through tunnels, hide and have hours of fun.

The simple plug-in system enables you to build a different labyrinth adventure playground every day. Simply reposition the short inner wall and create new and exciting routes for your pets to discover.

And another great highlight: the ingenious plug-in system allows you to expand the existing labyrinth in all directions with additional labyrinths. Let your imagination run wild!

## Labyrinth

INTERACTIVE: FOR PLAYING, HIDING, CLIMBING, SNOOZING, RUNNING for dwarf rabbits & rodents

- can be expanded creatively and individually with additional labyrinths
- flexible positioning of the inner walls for endlessly new routes
- simple plug-in system which is easy to assemble and dismantle
- fixed roof panel for a secure attachment, add more levels of labyrinths quickly and easily
- rounded edges, robust wood

### MINI

for small rodents



**Content:** 4 exterior sections, 1 interior section,  
1 roof plate including 4 plug connections

**Material:** birch wood

**Woodwidth:** 0.9 cm

**Labyrinth:** 24 x 10 x 24 cm (W|H|D)

**Openings:** 7.5 x 6.5 cm

Art. No.: 17703

Bar Code: 4018761177035

### MEDIUM



**Content:** 4 exterior sections, 2 interior sections, 1 roof panel

**Material:** birch wood

**Woodwidth:** 0.9 cm

**Labyrinth:** 57.5 x 26 x 57.5 cm (W|H|D)

**Openings:** 19 x 16.5 cm

Art. No.: 17702

Bar Code: 4018761177028

### LARGE



**Content:** 4 exterior sections, 2 interior sections, 1 roof panel

**Material:** birch wood

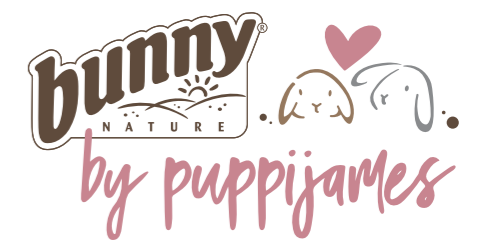
**Woodwidth:** 0.9 cm

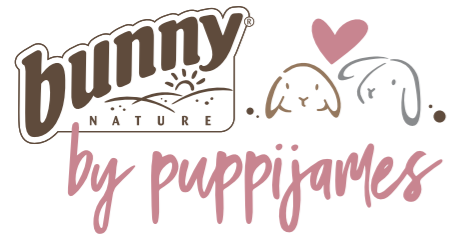
**Labyrinth:** 110 x 26 x 57.5 cm (W|H|D)

**Openings:** 19 x 16.5 cm

Art. No.: 17701

Bar Code: 4018761177011





## Campsite

for DWARF RABBITS  
& RODENTS

- enough space, 2 animals can get comfortable together, stretch out and chill
- various exits
- natural material
- plug system
- for cuddling and sleeping



A safe retreat is important especially for our precious darlings who are flight animals. It is their only way to truly unwind, relax and sleep. The tentbed illustrates how modern such a safe retreat can look. It is made from stable birch wood and matches any cage or flat perfectly with its appealing exterior. That's how modern equipment looks!

**Content:** 4 wall elements, 1 connecting element

**Material:** birch wood

**Woodwidth:** 0.9 cm

**Campsite:** 47 x 46 x 60 cm (W|H|D)

**Openings:** round entry: Ø 16.5 cm, edged entry: 30 x 15.5 cm

Art. No.: 17735

Bar Code: 4018761177356

## Campsite MINI

for RODENTS

- two exits/entrances
- lots of space
- natural material
- plug system
- ideal for chilling, sleeping, building, hiding and much more



The Campsite MINI for hamsters & co. is in no way inferior to the large version. On the contrary! It is not only a miniature edition, but has been adapted exactly to the special sleeping and hiding habits of the little speedsters.

**Content:** 4 wall elements

**Material:** robust birch wood

**Woodwidth:** 0.9 cm

**Campsite MINI:** 21 x 18 x 18 cm (W|H|D)

**Openings:** round entry: Ø 6.2 cm, edged entry: 7.8 x 6.8 cm

Art. No.: 17734

Bar Code: 4018761177349

## Nap Time Bed

for DWARF RABBITS  
& RODENTS

- plug system
- for cuddling and sleeping
- natural material



- perfect in combination with BEDDING EASY MINI



It takes only five easy steps to put together the slumber box. It provides an elevated resting spot where animals can cuddle and relax together.

**Content:** 1 head part | 2 side parts | 1 foot part | 1 floor

**Material:** birch wood

**Woodwidth:** 0.9 cm

**Nap Time Bed:** 30.7 x 21.5 x 51.8 cm (W|H|D)

Art. No.: 17736

Bar Code: 4018761177363

## Snuffleboard

for DWARF RABBITS  
& RODENTS

- boredom banned
- natural sisal  
40 millings with 4 sisal threads each
- natural material



Just hide a treat in the sisal gaps and you're ready for the snuffle adventure. That's a jackpot for sure!

**Dimensions:** 24.2 x 9 x 24.2 cm (W|H|D)

Art. No.: 17730

Bar Code: 4018761177301

# ACCESSORIES

Lovingly developed and produced: our bunnyAccessories.  
They are the perfect finishing touch to your pet's home and  
offer pets crucial added value.



# Fleecy

Soft, fluffy and wonderfully warm – the ideal place to relax! The super-fluffy Fleecy fleece tunnel from bunnyNature is filled with fine cotton wool. Your pet can easily tug it into his favourite position, and then all there is to do is relax, lie down and have a snooze!

## Fleece-Tunnel

for DWARF RABBITS  
& RODENTS



The tunnel is especially suitable for guinea pigs and dwarf rabbits, but rats, hamsters and other small rodents will also feel at home in it.

- soft, cuddly fleece
- cute design
- ideal for lying around and relaxing
- washable at 60°C

gray/pink	31 x 24 cm Ø 16 cm	Art. No.: 17070	Bar Code: 4018761170708
gray/turquoise	31 x 24 cm Ø 16 cm	Art. No.: 17071	Bar Code: 4018761170715

# Bowls

for DWARF RABBITS  
& RODENTS



High-quality ceramics, made with care and in a fantastic design — and also dishwasher-safe. Due to the high demand, we now offer three sizes of bowls as part of the range. This is excellent for use as a steady water or feeding bowl in any enclosure or cage.

S	Ø 8.4 cm	Art. No.: 17013	Bar Code: 4018761170135
L	Ø 12.6 cm	Art. No.: 17014	Bar Code: 4018761170142
XL	Ø 16.6 cm	Art. No.: 17015	Bar Code: 4018761170159

# miniMobil

for DWARF RABBITS  
& RODENTS



The ideal solution for the safe transportation of the animals from the pet shop to their new home. A very sturdy travel box in an animal-friendly size with practical carrying handle, double layer floor and attractive design. Useful for a variety of purposes, guaranteed.

34 x 24 x 21 cm	Art. No.: 17010	Bar Code: 4018761170104
-----------------	-----------------	-------------------------



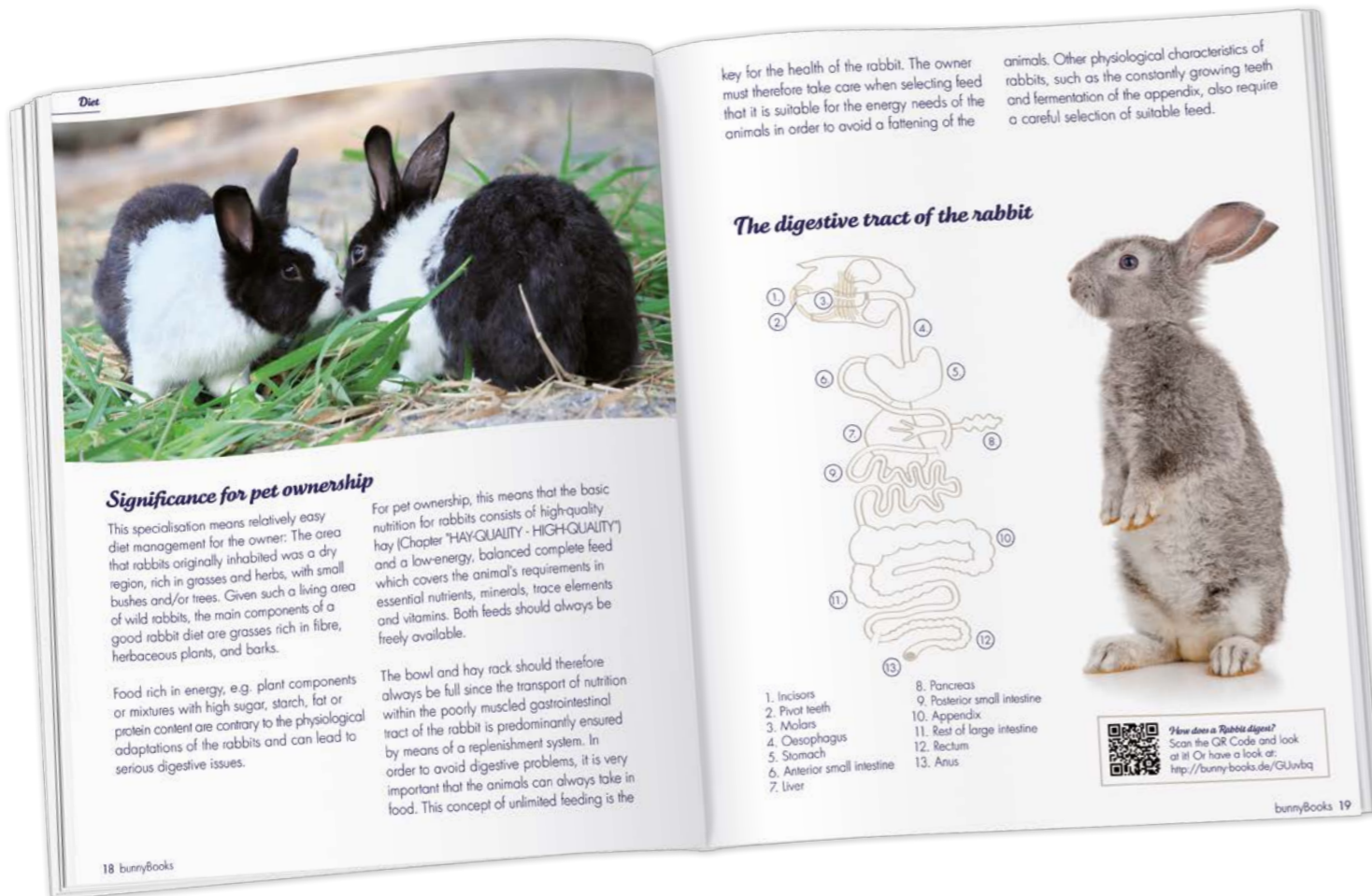
# BOOKS

Sharing knowledge is in our nature – and benefits the animals. After all, only those with knowledge can feed, keep and entertain small mammals appropriately for the species. Our bunnyBooks series communicates knowledge in an entertaining way.



# BOOKS

We have put together all our expertise of the nine small mammals in compact books with interesting, easy-to-read designs and interactive elements.



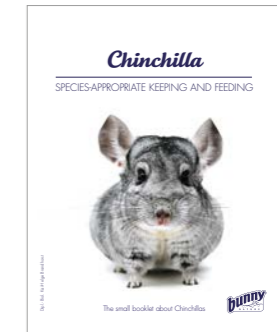
## RABBIT

52 pages Art. No.: 17580 Bar Code: 4018761175802



## GUINEA PIG

56 pages Art. No.: 17581 Bar Code: 4018761175819



## CHINCHILLA

52 pages Art. No.: 17582 Bar Code: 4018761175826



## DEGU

52 pages Art. No.: 17583 Bar Code: 4018761175833



## HAMSTER

52 pages Art. No.: 17584 Bar Code: 4018761175840



## DWARF HAMSTER

52 pages Art. No.: 17585 Bar Code: 4018761175857



## GERBIL

48 pages Art. No.: 17586 Bar Code: 4018761175864



## MOUSE

48 pages Art. No.: 17588 Bar Code: 4018761175888



## RAT

48 pages Art. No.: 17587 Bar Code: 4018761175871



# 35

**bunny**  
NATURE

**ANNIVERSARY**  
1988-2023



Bunny Tierernährung GmbH  
Krukumer Straße 37 · D-49328 Melle  
Fon +49 5226 9711-30 · Fax +49 5226 9711-44  
info@bunny-nature.com · www.bunny-nature.com

